

ZytoDot® SPEC ERBB2 Probe

Previously: ZytoDot SPEC HER2 Probe

Background

The ZytoDot® SPEC ERBB2 Probe is designed for the detection of ERBB2 gene amplification, frequently observed in solid malignant neoplasms, in formalin-fixed, paraffin-embedded tissue sections or cell samples.

The ERBB2 gene (a.k.a. HER2 and NEU) is located in the chromosomal region 17q12 and encodes the cellular growth factor receptor p185.

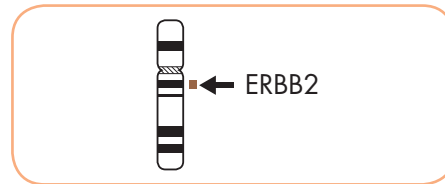
Amplification of the proto-oncogene ERBB2, observed in approximately 20% of all breast cancer samples, has been correlated with a poor prognosis of the disease. Similar results have been obtained for a variety of other malignant neoplasms e.g. ovarian cancer, stomach cancer, and carcinomas of the salivary gland.

References

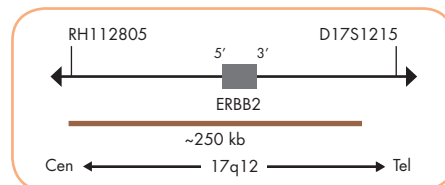
Ataseven B, et al. (2012) *Breast Care* 7: 465-70.
 Bhargava R, et al. (2005) *Am J Clin Pathol* 123: 237-43.
 Boissière-Michot F, et al. (2013) *Pathol Oncol Res* 19: 41-53.
 Brunello E, et al. (2012) *Histopathology* 60: 482-8.
 Brunner K, et al. (2010) *Anal Quant Cytol Histol* 32: 78-89.
 Coussens L, et al. (1985) *Science* 230: 1132-9.
 Cruz-Reyes C & Gamboa-Dominguez A (2013) *Int J Surg Pathol* 21: 240-6.
 Di Palma S, et al. (2008) *J Clin Pathol* 61: 757-60.
 Ettl T, et al. (2012) *Hum Pathol* 43: 921-31.
 Fasching P, et al. (2011) *BMC Cancer* 11: 486.
 Haas M, et al. (2011) *Virchows Arch* 458: 403-11.
 Hauser-Kronberger C & Dandachi N (2004) *J Mol Histol* 35: 647-53.
 Hwang CC, et al. (2011) *Histopathology* 59: 984-92.
 Kounelis S, et al. (2005) *Anticancer Res* 25: 939-46.
 Kuipers CCHJ, et al. (2013) *PLoS One* 19: 3078-87.
 Lehmann-Che L, et al. (2011) *Br J Cancer* 104: 1739-46.
 Moelans CB, et al. (2011) *Crit Rev Oncol Hematol* 80: 380-92.
 Mori N, et al. (2010) *Br J Cancer* 103: 889-98.
 Nie X, et al. (2013) *J Huazhong Univ Sci Technol Med Sci* 33: 379-84.
 Oikawa M, et al. (2013) *J Oral Pathol Med* 42: 424-34.
 Oliveira-Costa JP, et al. (2011) *Diagn Pathol* 6: 73.
 Shim BY, et al. (2009) *Asia Pac J Clin Oncol* 5: 232-41.
 Tsukamoto T, et al. (1991) *Int J Dev Biol* 35: 25-32.

Probe Description

The ZytoDot® SPEC ERBB2 Probe is a Digoxigenin-labeled probe specific for the ERBB2 gene at 17q12, processed by the unique ZytoVision® Repeat Subtraction Technique resulting in advanced specificity and less background.



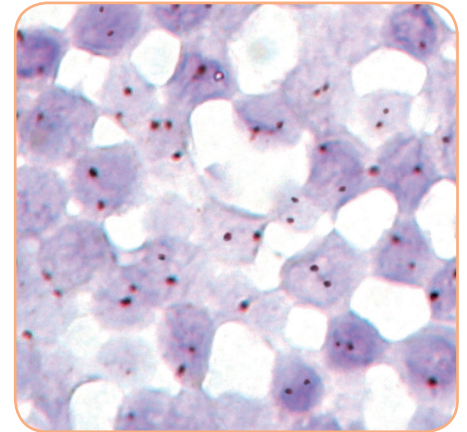
Ideogram of chromosome 17 indicating the hybridization locations.



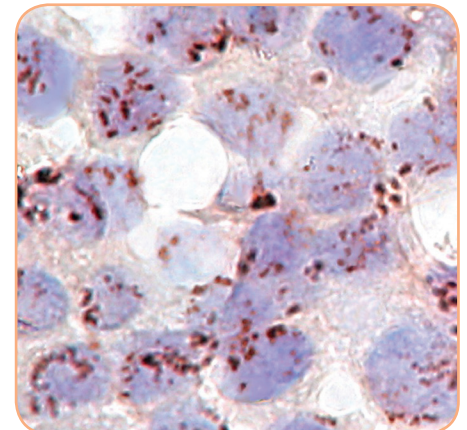
SPEC ERBB2 Probe map (not to scale).

Results

In normal cells, two distinct dot-shaped signals per nucleus will be observed. Nuclei with amplification of the ERBB2 gene locus or polysomy of chromosome 17 will show multiple dots or large signal clusters.



Normal nuclei each with two ERBB2 signals.



Breast carcinoma tissue section with ERBB2 amplification.

Prod. No.	Product	Label	Tests* (Volume)
C-3001-100	ZytoDot SPEC ERBB2 Probe CE IVD	Digoxigenin	10 (100 µl)
C-3001-400	ZytoDot SPEC ERBB2 Probe CE IVD	Digoxigenin	40 (400 µl)
C-3003-10	ZytoDot SPEC ERBB2 Probe Kit CE IVD Incl. Heat Pretreatment Solution EDTA, 150 ml; Pepsin Solution, 1 ml; Probe, 0.1 ml; Wash Buffer SSC, 150 ml; PBS/Tween, good for 1000 ml; Blocking Solution, 1 ml; Mouse-anti-DIG, 1 ml; Anti-Mouse-HRP-Polymer, 1 ml; DAB Solution A, 0.1 ml; DAB Solution B, 2 ml; Mayer's Hematoxylin Solution, 4 ml; Mounting Solution (alcoholic), 1 ml; Control Slides, 1 pcs.	Digoxigenin	10
C-3003-40	ZytoDot SPEC ERBB2 Probe Kit CE IVD Incl. Heat Pretreatment Solution EDTA, 500 ml; Pepsin Solution, 4 ml; Probe, 0.4 ml; Wash Buffer SSC, 500 ml; PBS/Tween, good for 2000 ml; Blocking Solution, 4 ml; Mouse-anti-DIG, 4 ml; Anti-Mouse-HRP-Polymer, 4 ml; DAB Solution A, 0.3 ml; DAB Solution B, 10 ml; Mayer's Hematoxylin Solution, 20 ml; Mounting Solution (alcoholic), 4 ml; Control Slides, 2 pcs.	Digoxigenin	40

* Using 10 µl probe solution per test. CE IVD only available in certain countries. All other countries research use only! Please contact your local dealer for more information.