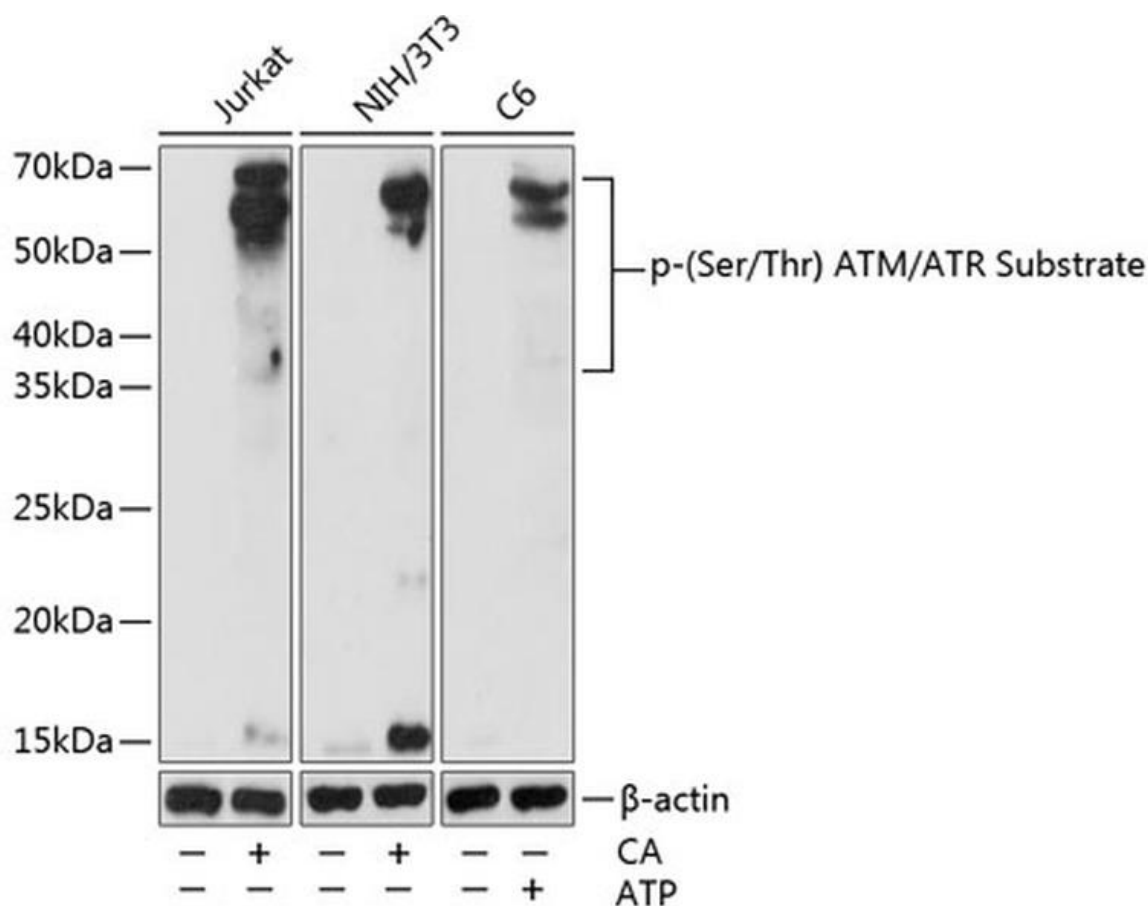


## Anti-Pan-Phospho-Serine/Threonine antibody

Cat # NB-22-47495-50 (50µL)

Cat # NB-22-47495-100 (100µL)

Cat # NB-22-47495-200 (200µL)



Western blot analysis of extracts of various cell lines, using Pan Phospho-(Ser/Thr) ATM/ATR Substrate polyclonal antibody at 1:1000 dilution. Jurkat and NIH/3T3 cells were treated by Calyculin A (100 nM) at 37°C for 30 minutes after serum-starvation overnight. C6 cells were treated by ATP (5 mM) at 30°C for 1 hour. Secondary antibody: HRP Goat anti-rabbit IgG (H&L) at 1:10000 dilution. Lysates/proteins: 25µg per lane. Blocking buffer: 3% nonfat Dry Milk in TBST. Detection: ECL Basic Kit. Exposure time: 60s

### Description

Rabbit polyclonal antibody anti-Pan-Phospho-Serine/Threonine

### Product Information

**Host:** Rabbit  
**Applications:** WB  
**Reactivity:** All species

**Clonality:** Polyclonal  
**Conjugation:** Unconjugated  
**Isotype:** IgG  
**Formulation:** PBS containing 0.02% Sodium Azide, 50% Glycerol, pH7.3.  
**Purification:** Affinity purification  
**Dilution Range:** WB 1:500-1:2000  
**Storage Instruction:** Store in a freezer at -20°C and avoid freeze-thaw cycles.

## Target

---

**Immunogen:** A phospho specific peptide corresponding to residues surrounding Ser/Thr of ATM/ATR Substrate.

For reference only

*For reference only  
For Research Use Only. Not for Diagnostic or Therapeutic Use.*