

Slo2.1 Antibody
Slo2.1 Antibody, Clone S11-33
Catalog # ASM10200

Specification

Slo2.1 Antibody - Product Information

| | |
|-------------------|-----------------------------|
| Application | WB, IHC |
| Primary Accession | O6UVM3 |
| Other Accession | NP_940905.2 |
| Host | Mouse |
| Isotype | IgG1 |
| Reactivity | Human, Mouse, Rat |
| Clonality | Monoclonal |

Description

Mouse Anti-Mouse Slo2.1 Monoclonal IgG1

Target/Specificity

Detects ~140kDa.

Other Names

KCNT2 Antibody, KCa4.2 Antibody, SLICK Antibody, Slo2.1 Antibody, sodium and chloride activated ATP sensitive potassium channel Slo2.1 Antibody

Immunogen

Fusion protein amino acids 564-624 of mouse Slo2.1 (Slick)

Purification

Protein G Purified

Storage **-20°C**

Storage Buffer

PBS pH7.4, 50% glycerol, 0.09% sodium azide

Shipping Temperature **Blue Ice or 4°C**

Certificate of Analysis

1 µg/ml of SMC-324 was sufficient for detection of Slo2.1 in 10 µg of rat brain lysate by colorimetric immunoblot analysis using goat anti-mouse IgG:HRP as the secondary antibody.

Cellular Localization

Cell Membrane

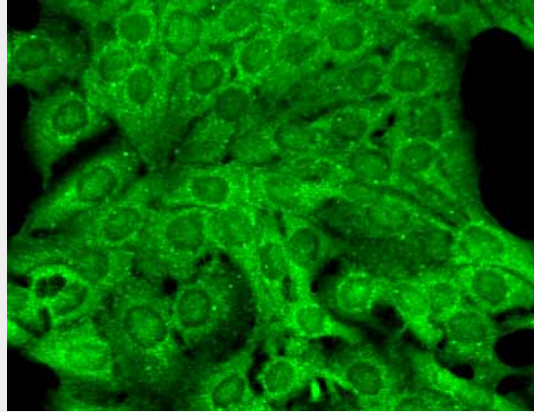
Slo2.1 Antibody - Protocols

Provided below are standard protocols that you may find useful for product applications.

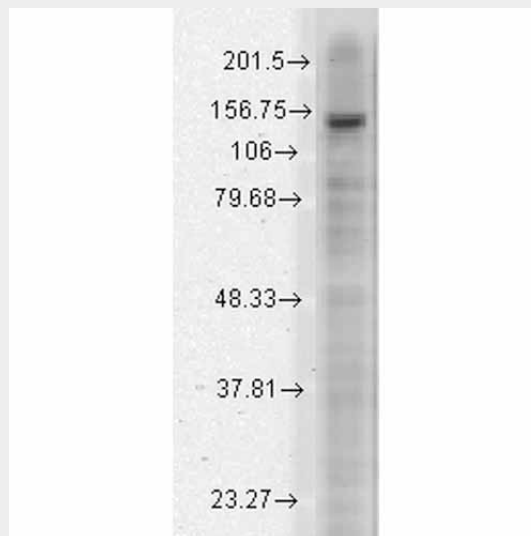
- [Western Blot](#)
- [Blocking Peptides](#)
- [Dot Blot](#)
- [Immunohistochemistry](#)

- [Immunofluorescence](#)
- [Immunoprecipitation](#)
- [Flow Cytometry](#)
- [Cell Culture](#)

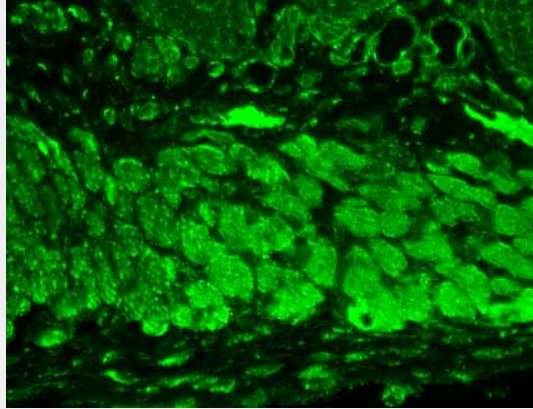
Slo2.1 Antibody - Images



Immunocytochemistry/Immunofluorescence analysis using Mouse Anti-Slo2.1 Potassium Channel Monoclonal Antibody, Clone S11-33 (ASM10200). Tissue: HaCaT cells. Species: Human. Fixation: Cold 100% methanol for 10 minutes at -20°C. Primary Antibody: Mouse Anti-Slo2.1 Potassium Channel Monoclonal Antibody (ASM10200) at 1:100 for 1 hour at RT. Secondary Antibody: FITC Goat Anti-Mouse (green) at 1:50 for 1 hour at RT. Localization: All cells positive (nuclei and cytoplasm).



Western Blot analysis of Rat brain membrane lysate showing detection of Slo2.1 Potassium Channel protein using Mouse Anti-Slo2.1 Potassium Channel Monoclonal Antibody, Clone S11-33 (ASM10200). Load: 15 µg. Block: 1.5% BSA for 30 minutes at RT. Primary Antibody: Mouse Anti-Slo2.1 Potassium Channel Monoclonal Antibody (ASM10200) at 1:1000 for 2 hours at RT. Secondary Antibody: Sheep Anti-Mouse IgG: HRP for 1 hour at RT.



Immunohistochemistry analysis using Mouse Anti-Slo2.1 Potassium Channel Monoclonal Antibody, Clone S11-33 (ASM10200). Tissue: backskin. Species: Mouse. Fixation: Bouin's Fixative and paraffin-embedded. Primary Antibody: Mouse Anti-Slo2.1 Potassium Channel Monoclonal Antibody (ASM10200) at 1:100 for 1 hour at RT. Secondary Antibody: FITC Goat Anti-Mouse (green) at 1:50 for 1 hour at RT. Localization: Epidermis.

Slo2.1 Antibody - Background

Slo2.1 is a novel member of the mammalian Slo potassium channel gene family (1). The slick channel is activated by intracellular Na^+ and Cl^- and is inhibited by intracellular ATP. It is also widely expressed in the CNS and detected in the heart (2).

Slo2.1 Antibody - References

1. Santi C.M., et al. (2006) J Neuroscience 26(19): 5059-5068.
2. Bhattacharjee A., et al. (2003) J Neuroscience 23(37): 11681-11691.