

A21238

Leader in Biomolecular Solutions for Life Science



# CD141/Thrombomodulin Rabbit mAb

Catalog No.: A21238 **Recombinant**

## Basic Information

### Observed MW

Refer to figures

### Calculated MW

60kDa

### Category

SMab Recombinant Monoclonal  
Antibody

### Applications

IHC-P,IF,ICC,FC,ELISA

### Cross-Reactivity

Human

### CloneNo number

ARC52600

## Recommended Dilutions

<b>IHC-P</b>	1:500 - 1:1000
<b>IF/ICC</b>	1:50 - 1:200
<b>FC</b>	1:100-1:500
<b>ELISA</b>	Recommended starting concentration is 1 µg/mL. Please optimize the concentration based on your specific assay requirements.

## Contact



[www.abclonal.com](http://www.abclonal.com)

## Background

The protein encoded by this intronless gene is an endothelial-specific type I membrane receptor that binds thrombin. This binding results in the activation of protein C, which degrades clotting factors Va and VIIIa and reduces the amount of thrombin generated. Mutations in this gene are a cause of thromboembolic disease, also known as inherited thrombophilia.

## Immunogen Information

<b>Gene ID</b>	<b>Swiss Prot</b>
7056	P07204

### Immunogen

Recombinant fusion protein containing a sequence corresponding to amino acids 19-515 of human CD141/Thrombomodulin (NP\_000352.1).

### Synonyms

TM; THRM; AHUS6; BDCA3; CD141; BDCA-3; THPH12; CD141/Thrombomodulin

## Product Information

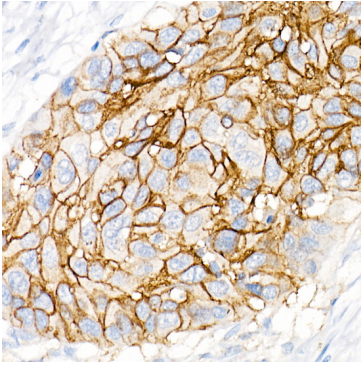
<b>Source</b>	<b>Isotype</b>	<b>Purification</b>
Rabbit	IgG	Affinity purification

### Storage

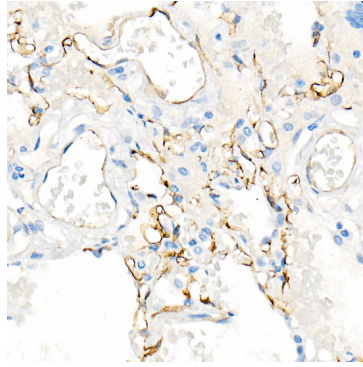
Store at -20°C. Avoid freeze / thaw cycles.

Buffer: PBS with 0.05% proclin300,0.05% BSA,50% glycerol,pH7.3.

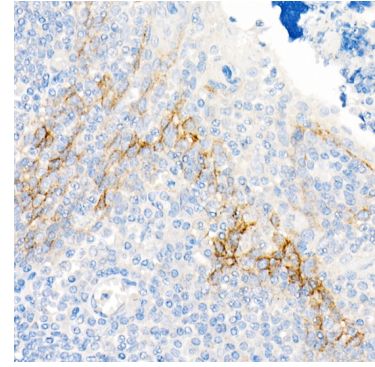
## Validation Data



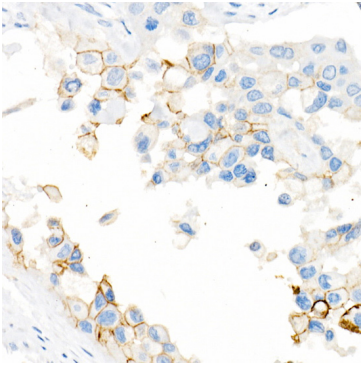
Immunohistochemistry analysis of paraffin-embedded Human lung squamous carcinoma tissue using CD141/Thrombomodulin Rabbit mAb (A21238) at dilution of 1:1000 (40x lens). High pressure antigen retrieval performed with 0.01M Citrate Bufferr (pH 6.0) prior to IHC staining.



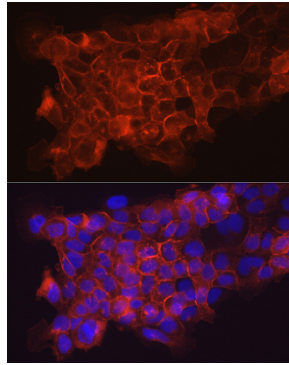
Immunohistochemistry analysis of paraffin-embedded Human lung using CD141/Thrombomodulin Rabbit mAb (A21238) at dilution of 1:1000 (40x lens). High pressure antigen retrieval performed with 0.01M Citrate Bufferr (pH 6.0) prior to IHC staining.



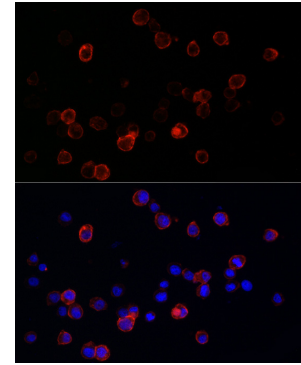
Immunohistochemistry analysis of paraffin-embedded Human tonsil using CD141/Thrombomodulin Rabbit mAb (A21238) at dilution of 1:1000 (40x lens). High pressure antigen retrieval performed with 0.01M Citrate Bufferr (pH 6.0) prior to IHC staining.



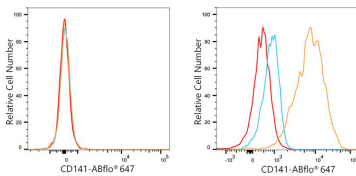
Immunohistochemistry analysis of paraffin-embedded Human urothelial carcinoma using CD141/Thrombomodulin Rabbit mAb (A21238) at dilution of 1:1000 (40x lens). High pressure antigen retrieval performed with 0.01M Citrate Bufferr (pH 6.0) prior to IHC staining.



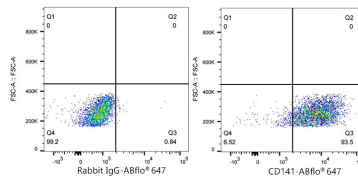
Immunofluorescence analysis of A431 cells using CD141/Thrombomodulin Rabbit mAb (A21238) at dilution of 1:100 (40x lens). Secondary antibody: Cy3-conjugated Goat anti-Rabbit IgG (H+L) (AS007) at 1:500 dilution. Blue: DAPI for nuclear staining.



Immunofluorescence analysis of THP-1 cells using CD141/Thrombomodulin Rabbit mAb (A21238) at dilution of 1:100 (40x lens). Secondary antibody: Cy3-conjugated Goat anti-Rabbit IgG (H+L) (AS007) at 1:500 dilution. Blue: DAPI for nuclear staining.



Flow cytometry:  $1 \times 10^6$  Jurkat cells (negative control, left) and THP-1 cells (right) were surface-stained with



Flow cytometry:  $1 \times 10^6$  THP-1 cells were surface-stained with ABR@647 Rabbit IgG isotype control

## Validation Data

---

CD141/Thrombomodulin Rabbit mAb (A21238,2.5 µg/mL,orange line) or ABflo® 647 Rabbit IgG isotype control (A22070,5 µl/Test,blue line), followed by Alexa Fluor® 647 conjugated goat anti-rabbit pAb staining. Non-fluorescently stained cells were used as blank control (red line).

(A22070,5 µl/Test,left) or CD141/Thrombomodulin Rabbit mAb (A21238,2.5 µg/mL,right).