

A22541

Leader in Biomolecular Solutions for Life Science



Slow Skeletal Myosin Heavy chain Rabbit pAb

Catalog No.: A22541

Basic Information

Observed MW

230kDa

Calculated MW

223kDa

Category

Polyclonal Antibody

Applications

WB

Cross-Reactivity

Human,Mouse,Rat

Background

Muscle myosin is a hexameric protein containing 2 heavy chain subunits, 2 alkali light chain subunits, and 2 regulatory light chain subunits. This gene encodes the beta (or slow) heavy chain subunit of cardiac myosin. It is expressed predominantly in normal human ventricle. It is also expressed in skeletal muscle tissues rich in slow-twitch type I muscle fibers. Changes in the relative abundance of this protein and the alpha (or fast) heavy subunit of cardiac myosin correlate with the contractile velocity of cardiac muscle. Its expression is also altered during thyroid hormone depletion and hemodynamic overloading. Mutations in this gene are associated with familial hypertrophic cardiomyopathy, myosin storage myopathy, dilated cardiomyopathy, and Laing distal myopathy.

Recommended Dilutions

WB 1:100 - 1:500

Immunogen Information

Gene ID

4625

Swiss Prot

P12883

Immunogen

Recombinant protein of human Slow Skeletal Myosin Heavy chain.

Synonyms

CMH1; MPD1; SPMD; SPMM; CMD1S; MYHCB; CMYP7A; CMYP7B; Slow Skeletal Myosin Heavy chain

Contact

 www.abclonal.com

Product Information

Source

Rabbit

Isotype

IgG

Purification

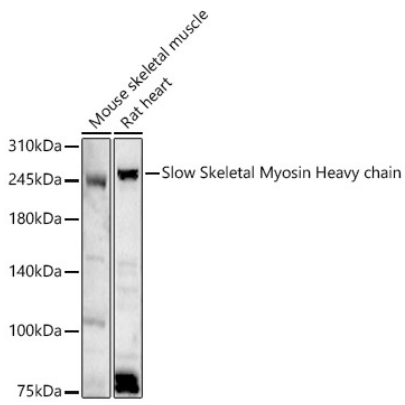
Affinity purification

Storage

Store at -20°C. Avoid freeze / thaw cycles.

Buffer: PBS with 0.02% sodium azide, 50% glycerol, pH7.3.

Validation Data



Western blot analysis of various lysates, using Slow Skeletal Myosin Heavy chain antibody (A22541) at 1:400 dilution.
Secondary antibody: HRP Goat Anti-Rabbit IgG (H+L) (AS014) at 1:10000 dilution.
Lysates/proteins: 25µg per lane.
Blocking buffer: 3% nonfat dry milk in TBST.
Detection: ECL Basic Kit (RM00020).
Exposure time: 180s.