

**REEP2 Antibody**  
**REEP2 Antibody, Clone S326D-2**  
**Catalog # ASM10313**

**Specification**

---

**REEP2 Antibody - Product Information**

Application	<b>WB</b>
Primary Accession	<a href="#">O8VCD6</a>
Other Accession	<a href="#">NP_001191843.1</a>
Host	<b>Mouse</b>
Isotype	<b>IgG2A</b>
Reactivity	<b>Human, Mouse, Rat</b>
Clonality	<b>Monoclonal</b>

**Description**

Mouse Anti-Mouse REEP2 Monoclonal IgG2A

**Target/Specificity**

Detects ~30kDa.

**Other Names**

Receptor expression-enhancing protein 2 Antibody, C2orf19 Antibody, SGC32445 Antibody, LOC682105 Antibody

**Immunogen**

Fusion protein amino acids 111-254 (cytoplasmic C-terminus) of mouse REEP2

**Purification**

Protein G Purified

Storage **-20°C**

**Storage Buffer**

PBS pH7.4, 50% glycerol, 0.1% sodium azide

Shipping Temperature **Blue Ice or 4°C**

**Certificate of Analysis**

A 1:100 dilution of SMC-481 was sufficient for detection of REEP2 in 20 µg of mouse brain lysate by ECL immunoblot analysis using Goat anti-mouse IgG:HRP as the secondary antibody.

**Cellular Localization**

Mitochondrion | Mitochondrion Membrane | Endoplasmic Reticulum | Endoplasmic Reticulum Membrane

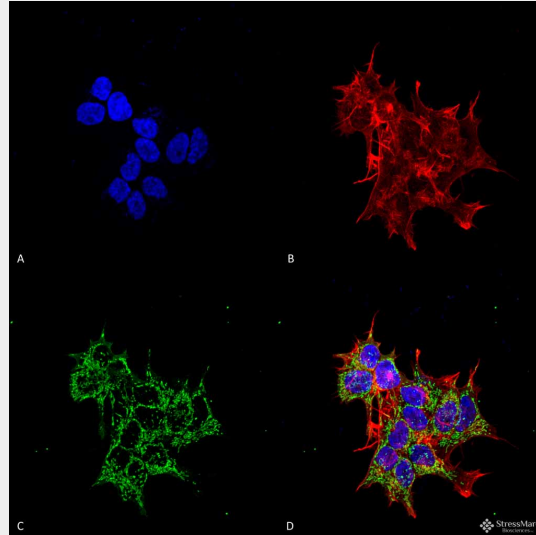
**REEP2 Antibody - Protocols**

Provided below are standard protocols that you may find useful for product applications.

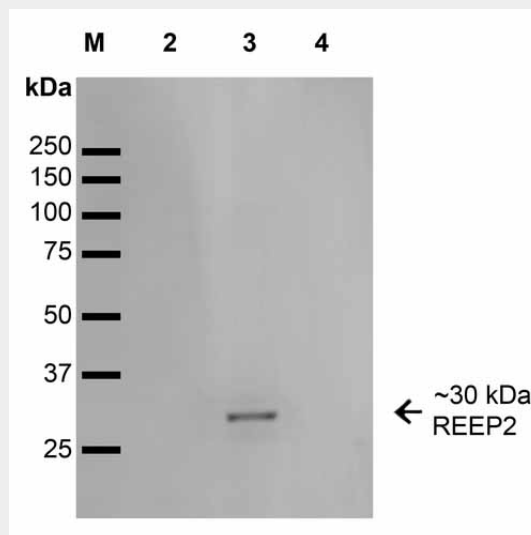
- [Western Blot](#)
- [Blocking Peptides](#)
- [Dot Blot](#)

- [Immunohistochemistry](#)
- [Immunofluorescence](#)
- [Immunoprecipitation](#)
- [Flow Cytometry](#)
- [Cell Culture](#)

### REEP2 Antibody - Images



Immunocytochemistry/Immunofluorescence analysis using Mouse Anti-REEP2 Monoclonal Antibody, Clone S326D-2 (ASM10313). Tissue: Neuroblastoma cell line (SK-N-BE). Species: Human. Fixation: 4% Formaldehyde for 15 min at RT. Primary Antibody: Mouse Anti-REEP2 Monoclonal Antibody (ASM10313) at 1:100 for 60 min at RT. Secondary Antibody: Goat Anti-Mouse ATTO 488 at 1:100 for 60 min at RT. Counterstain: Phalloidin Texas Red F-Actin stain; DAPI (blue) nuclear stain at 1:1000; 1:5000 for 60 min RT, 5 min RT. Localization: Mitochondrion, Mitochondrion Membrane, Endoplasmic Reticulum, Endoplasmic Reticulum Membrane. Magnification: 60X. (A) DAPI (blue) nuclear stain (B) Phalloidin Texas Red F-Actin stain (C) REEP2 Antibody (D) Composite.



Western Blot analysis of COS-REEP2-His showing detection of ~ 30 kDa REEP2 protein using Mouse Anti-REEP2 Monoclonal Antibody, Clone S326D-2 (ASM10313). Lane 1: MW Ladder. Lane 2: COS-REEP1-His. Lane 3: COS-REEP2-His. Lane 4: COS-REEP6-His. Load: 15 µg. Block: 2% GE Healthcare Blocker for 1 hour at RT. Primary Antibody: Mouse Anti-REEP2 Monoclonal Antibody

(ASM10313) at 1:1000 for 16 hours at 4°C. Secondary Antibody: Goat Anti-Mouse IgG: HRP at 1:200 for 1 hour at RT. Color Development: ECL solution for 6 min at RT. Predicted/Observed Size: ~ 30 kDa.

### **REEP2 Antibody - Background**

REEP2 belongs to the REEP family, which are transmembrane proteins that interact with odorant receptor proteins and may enhance the odorant receptor responses to odorants. REEP2 is also an integral membrane protein expressed in taste cells. Unlike its counterpart REEP1, REEP2 does not increase cell surface expression to sweet receptors, but instead alters their spatial organization (1).

### **REEP2 Antibody - References**

1. Ilegems E., et al. (2010) J Neurosci. 30(41): 13774-13783.