

mGluR1/5 Antibody
mGluR1/5 Antibody, Clone S75-33
Catalog # ASM10241

Specification

mGluR1/5 Antibody - Product Information

Application	WB
Primary Accession	P31424
Other Accession	NP_058708.1
Host	Mouse
Isotype	IgG1
Reactivity	Human, Mouse, Rat
Clonality	Monoclonal

Description

Mouse Anti-Rat mGluR1/5 Monoclonal IgG1

Target/Specificity

Detects ~130kDa (both mGluR1 and mGluR5).

Other Names

Glutamate receptor metabotropic 5, GPRC1E Antibody, GRM 5 Antibody, GRM5 Antibody, Metabotropic glutamate receptor 5 Antibody, Metabotropic glutamate receptor 5 variant F Antibody, Metabotropic glutamate receptor 5 variant G Antibody, Metabotropic glutamate receptor 5 variant H Antibody, mGlu5 Antibody, mGluR5 Antibody, mGluR5a Antibody, mGluR5b Antibody, Glutamate receptor metabotropic 1 Antibody, glutamate receptor Antibody, metabotropic 1 Antibody, GPRC1A Antibody, GRM 1 Antibody, GRM1 alpha Antibody, GRM1 Antibody, GRM1_HUMAN Antibody, GRM1A Antibody, Metabotropic glutamate receptor 1 Antibody, mGlu1 Antibody, mGluR1 alpha Antibody, mGluR1 Antibody, mGluR1A Antibody

Immunogen

Fusion protein amino acids 824-1203 (cytoplasmic C-terminus) of rat mGluR5b

Purification

Protein G Purified

Storage **-20°C**

Storage Buffer

PBS pH7.4, 50% glycerol, 0.09% sodium azide

Shipping Temperature

Blue Ice or 4°C

Certificate of Analysis

1 µg/ml of SMC-407 was sufficient for detection of mGluR1/5 glutamate receptor in 20 µg of rat brain membrane lysate and assayed by colorimetric immunoblot analysis using goat anti-mouse IgG:HRP as the secondary antibody.

Cellular Localization

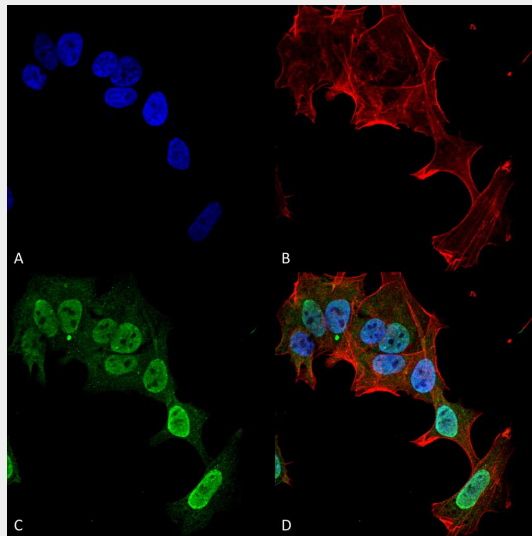
Cell Membrane

mGluR1/5 Antibody - Protocols

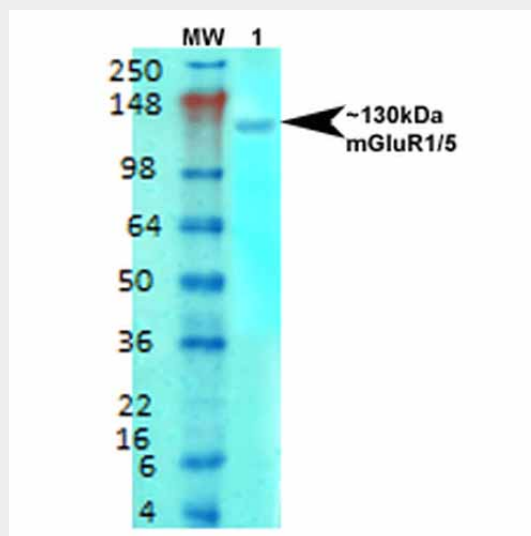
Provided below are standard protocols that you may find useful for product applications.

- [Western Blot](#)
- [Blocking Peptides](#)
- [Dot Blot](#)
- [Immunohistochemistry](#)
- [Immunofluorescence](#)
- [Immunoprecipitation](#)
- [Flow Cytometry](#)
- [Cell Culture](#)

mGluR1/5 Antibody - Images



Immunocytochemistry/Immunofluorescence analysis using Mouse Anti-mGluR1/5 Monoclonal Antibody, Clone S75-33 (ASM10241). Tissue: Neuroblastoma cell line (SK-N-BE). Species: Human. Fixation: 4% Formaldehyde for 15 min at RT. Primary Antibody: Mouse Anti-mGluR1/5 Monoclonal Antibody (ASM10241) at 1:100 for 60 min at RT. Secondary Antibody: Goat Anti-Mouse ATTO 488 at 1:200 for 60 min at RT. Counterstain: Phalloidin Texas Red F-Actin stain; DAPI (blue) nuclear stain at 1:1000, 1:5000 for 60 min at RT, 5 min at RT. Localization: Cell Membrane, Cytoplasm, Nucleus. Magnification: 60X.



Western Blot analysis of Rat brain membrane lysate showing detection of mGluR5 Glutamate Receptor protein using Mouse Anti-mGluR5 Glutamate Receptor Monoclonal Antibody, Clone S75-33 (ASM10241). Primary Antibody: Mouse Anti-mGluR5 Glutamate Receptor Monoclonal Antibody (ASM10241) at 1:1000.

mGluR1/5 Antibody - Background

The AMPA receptor is a non-NMDA-type ionotropic transmembrane receptor for glutamate that mediates fast synaptic transmission in the CNS. AMPARs are composed of four types of subunits, designated as GluR1, GluR2, GluR3 and GluR4, which combine to form tetramers (1,2).

mGluR1/5 Antibody - References

1. Mayer M.L. (2005) Current Opinion in Neurobio. 15(3): 282-288.
2. Keinane K., et al. (1990) Science. 249: 556-560.