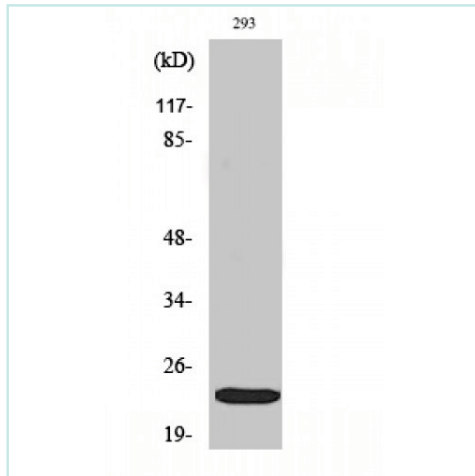


Phospho-eIF4E (S209) antibody



Product Description

Rabbit Polyclonal to Phospho-eIF4E (S209).

Product Information

Code:	NB-22-0254
Clonality	Polyclonal
Host	Rabbit
Reactivity	Human, Mouse, Rat
Applications	WB, IHC, ELISA
Immunogen	Synthesized peptide derived from human eIF4E around the phosphorylation site of S209.
Immunogen Region	140-220aa
Conjugation	Unconjugated
Gene ID	1977 (Human); 13684 (Mouse); 117045 (Rat)
Isotype	IgG
Dilution range	WB 1:500-1:2000; IHC 1:100-1:300; ELISA 1:20000;
Specificity	Phospho-eIF4E (S209) Polyclonal Antibody detects endogenous levels of eIF4E protein only when phosphorylated at S209.
Swiss-Prot Key	P06730 (Human); P63073 (Mouse); P63074 (Rat)
Purification	The antibody was affinity-purified from rabbit antiserum by affinity-chromatography using epitope-specific immunogen.
Form	Liquid in PBS containing 50% glycerol, 0.5% BSA and 0.02% sodium azide.
Molecular Weight	25 kDa
Concentration	1 mg/ml
Storage	Store at -20°C. Avoid repeated freeze/thaw cycles.
Alternative names	EIF4E; EIF4EL1; EIF4F; Eukaryotic translation initiation factor 4E; eIF-4E; eIF4E; eIF-4F 25 kDa subunit; mRNA cap-binding protein
Note	For research use only.