

Thorase/Atad1 Antibody
Thorase/Atad1 Antibody, Clone S125-10
Catalog # ASM10223**Specification**

Thorase/Atad1 Antibody - Product Information

Application	WB, IHC
Primary Accession	O9D5TO
Other Accession	NP_080763.2
Host	Mouse
Isotype	IgG1
Reactivity	Human, Mouse, Rat
Clonality	Monoclonal

Description

Mouse Anti-Mouse Thorase/Atad1 Monoclonal IgG1

Target/Specificity

Detects ~40kDa.

Other Names

ATAD1 antibody, AAA+ ATPase Thorase antibody, Ab2-088 antibody, AFDC1 antibody, ATAD1_HUMAN antibody, ATPase family AAA domain containing protein 1 antibody, ATPase family AAA domain-containing protein 1 antibody, ATPase family, AAA domain containing 1 antibody, ATPase Thorase antibody, AW107648 antibody, FLJ14600 antibody, FNP001 antibody, Thorase antibody

Immunogen

Fusion protein amino acids 1-361 (Full length) of mouse Thorase

Purification

Protein G Purified

Storage **-20°C****Storage Buffer**

PBS pH7.4, 50% glycerol, 0.09% sodium azide

Shipping Temperature **Blue Ice or 4°C****Certificate of Analysis**

1 µg/ml of SMC-347 was sufficient for detection of Thorase in 10 µg of rat brain lysate by colorimetric immunoblot analysis using Goat anti-mouse IgG:HRP as the secondary antibody.

Cellular Localization

Peroxisome

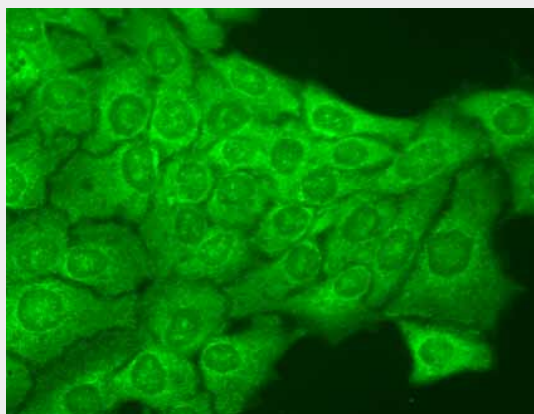
Thorase/Atad1 Antibody - Protocols

Provided below are standard protocols that you may find useful for product applications.

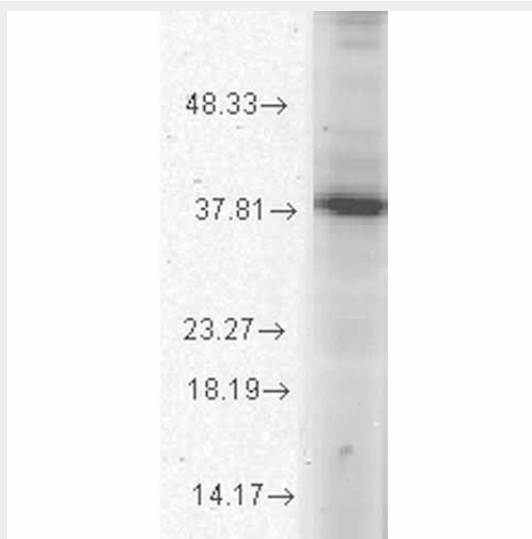
- [Western Blot](#)

- [Blocking Peptides](#)
- [Dot Blot](#)
- [Immunohistochemistry](#)
- [Immunofluorescence](#)
- [Immunoprecipitation](#)
- [Flow Cytometry](#)
- [Cell Culture](#)

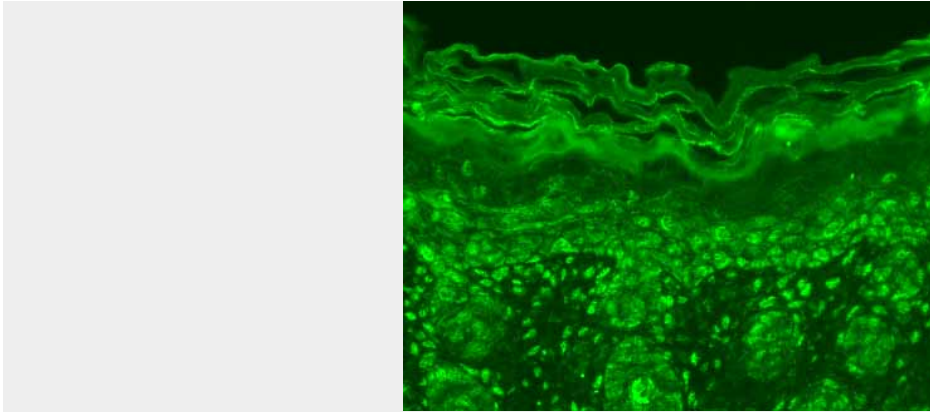
Thorase/Atad1 Antibody - Images



Immunocytochemistry/Immunofluorescence analysis using Mouse Anti-ATAD1 ATPase Monoclonal Antibody, Clone S125-10 (ASM10223). Tissue: HaCaT cells. Species: Human. Fixation: Cold 100% methanol for 10 minutes at -20°C. Primary Antibody: Mouse Anti-ATAD1 ATPase Monoclonal Antibody (ASM10223) at 1:100 for 1 hour at RT. Secondary Antibody: FITC Goat Anti-Mouse (green) at 1:50 for 1 hour at RT. Localization: Cytoplasmic and accumulates around nucleus.



Western Blot analysis of Rat brain membrane lysate showing detection of ATAD1 ATPase protein using Mouse Anti-ATAD1 ATPase Monoclonal Antibody, Clone S125-10 (ASM10223). Load: 15 µg. Block: 1.5% BSA for 30 minutes at RT. Primary Antibody: Mouse Anti-ATAD1 ATPase Monoclonal Antibody (ASM10223) at 1:1000 for 2 hours at RT. Secondary Antibody: Sheep Anti-Mouse IgG: HRP for 1 hour at RT.



Immunohistochemistry analysis using Mouse Anti-ATAD1 ATPase Monoclonal Antibody, Clone S125-10 (ASM10223). Tissue: backskin. Species: Mouse. Fixation: Bouin's Fixative and paraffin-embedded. Primary Antibody: Mouse Anti-ATAD1 ATPase Monoclonal Antibody (ASM10223) at 1:100 for 1 hour at RT. Secondary Antibody: FITC Goat Anti-Mouse (green) at 1:50 for 1 hour at RT. Localization: Nuclear staining in all basal cells.

Thorase/Atad1 Antibody - Background

Thorase, also known as Atad1 or ATPase family AAA domain-containing protein 1 is involved in synaptic plasticity, learning and memory through the regulation of the surface expression of AMPA receptors (AMPA). Thorase is widely expressed with the highest expression in the brain and testis.

Thorase/Atad1 Antibody - References

1. Genes to Systems Breast Cancer Database (G2SBC):
www.itb.cnr.it/breastcancer/php/geneReport.php?id=84896