

Human Aortic Endothelial Cells

Cat# NB-11-0015

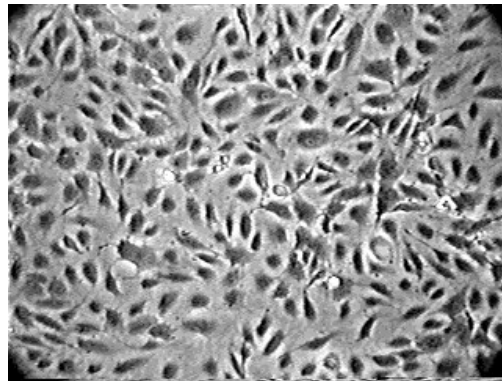
Introduction

Primary Human Aortic Endothelial Cells (NB-11-0015) were initiated from normal human descending aorta (aortic arch to renal artery).

Cell initiation

These cells were originated using CSC Complete Serum-Free Medium (NB-11-0061), and subsequently grown and passaged in CSC Complete Medium (NB-11-0046). They are available at Passage 3 [< 12 cumulative population doublings] cryopreserved in CSC Cell Freezing Medium (NB-11-0075). This vial will initiate a Passage 4 cell culture in a 75cm^2 flask.

In addition to cryopreserved vials, these cells also are available in 25cm^2 and 75cm^2 proliferating cell culture flasks.



Digital Phase-Contrast Image (40X)

Companion Products

Each vial or flask of cells is shipped to Customer with Bac-Off® (antibiotic) and CultureBoost (animal derived growth factors) or CultureBoost-R (human recombinant growth factors) at no additional cost.

These cells are qualified for use with: CSC Complete Serum Free Medium (NB-11-0061) and CSC Complete Medium which includes 10% serum (NB-11-0046); CSC Attachment Factor™ (NB-11-0069); CSC Passage Reagent Group™ (NB-11-0076) and CSC Cell Freezing Medium (NB-11-0075).

Standard Tests

TEST	RESULTS
HIV Serologic Test (donor level HIV AB EIA)	Negative
HIV PCR TEST (frozen cell pool by CLIA Licensed Clinical Lab)	Negative
Test of frozen cells for Mycoplasma spp. (ATCC method by CLIA Licensed Clinical Lab)	Negative

Miscellaneous Tests

TEST	RESULTS
Inducible expression of CD 62E (E-Selectin)	> 82% positive by immunofluorescence
Cytoplasmic Vimentin Intermediate Filaments	> 98% positive by immunofluorescence
Cytoplasmic VWF / Factor VIII	> 95% positive by immunofluorescence