

SAPAP (pan) Antibody
SAPAP Antibody, Clone S127-31
Catalog # ASM10214**Specification****SAPAP (pan) Antibody - Product Information**

Application	WB
Primary Accession	P97836
Other Accession	NP_075235.2
Host	Mouse
Isotype	IgG2b
Reactivity	Human, Mouse, Rat
Clonality	Monoclonal

Description

Mouse Anti-Rat SAPAP (pan) Monoclonal IgG2b

Target/Specificity

Detects ~120kDa (SAPAP2), ~110kDa (SAPAP1/3/4). It does cross-react with other SAPAPs.

Other Names

DAP 1 ALPHA antibody, DAP 1 antibody, DAP 1 BETA antibody, DAP-1 antibody, DAP-1-ALPHA antibody, DAP-1-BETA antibody, DAP1 antibody, Discs large (Drosophila) homolog associated protein 1 antibody, Discs large homolog associated protein 1 antibody, Disks large associated protein 1 antibody, Disks large associated protein 1 alpha isoform included antibody, Disks large associated protein 1, beta isoform, included antibody, Disks large-associated protein 1 antibody, DLGAP 1 antibody, Dlgap1 antibody, DLGP1_HUMAN antibody, GKAP antibody, GKAP/SAPAP antibody, GKPA/SAPAP antibody, Guanylate kinase associated protein antibody, Guanylate kinase-associated protein antibody, hGKAP antibody, KIAA4162 antibody, MGC88156 antibody, mKIAA4162 antibody, PSD 95/SAP90 binding protein 1 antibody, PSD-95/SAP90-binding protein 1 antibody, SAP90/PSD 95 associated protein 1 antibody, SAP90/PSD-95-associated protein 1 antibody, SAPAP 1 antibody, SAPAP1 antibody

Immunogen

Fusion protein amino acids 772-992 (C-terminus) of rat SAPAP1

Purification

Protein G Purified

Storage **-20°C****Storage Buffer**

PBS pH7.4, 50% glycerol, 0.1% sodium azide

Shipping Temperature **Blue Ice or 4°C****Certificate of Analysis**

1 µg/ml of SMC-338 was sufficient for detection of SAPAP 1-4 in 10 µg of rat brain lysate by colorimetric immunoblot analysis using goat anti-mouse IgG:HRP as the secondary antibody.

Cellular Localization

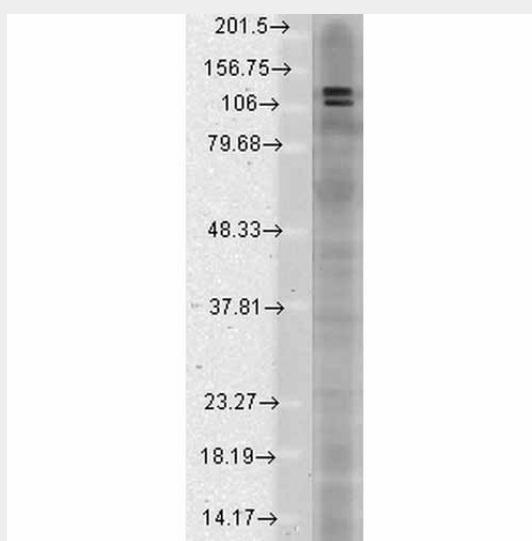
Cell Membrane | Cell Junction | Synapse | Postsynaptic Cell Membrane | Postsynaptic Density

SAPAP (pan) Antibody - Protocols

Provided below are standard protocols that you may find useful for product applications.

- [Western Blot](#)
- [Blocking Peptides](#)
- [Dot Blot](#)
- [Immunohistochemistry](#)
- [Immunofluorescence](#)
- [Immunoprecipitation](#)
- [Flow Cytometry](#)
- [Cell Culture](#)

SAPAP (pan) Antibody - Images



Western Blot analysis of Rat brain membrane lysate showing detection of SAPAP protein using Mouse Anti-SAPAP Monoclonal Antibody, Clone S127-31 (ASM10214). Load: 15 μ g. Block: 1.5% BSA for 30 minutes at RT. Primary Antibody: Mouse Anti-SAPAP Monoclonal Antibody (ASM10214) at 1:1000 for 2 hours at RT. Secondary Antibody: Sheep Anti-Mouse IgG: HRP for 1 hour at RT.

SAPAP (pan) Antibody - Background

The SAPAP proteins are thought to be adaptor proteins that also interact with different synaptic scaffolding proteins, cytoskeletal and signaling components (1, 2). SAPAP1, 2 and 4 mRNA are targeted to cell bodies, whereas SAPAP3 mRNA is detected mainly in cell bodies (1, 3).

SAPAP (pan) Antibody - References

1. Kindler S., et al. (2004) Brain Res. Mol Brain Res. 126: 14-21.
2. Bongiorno-Borbone L., et al. (2005) Biochem, Biophys. Res Commun. 337: 641-646.
3. Welch J.M., Wang D., and Fend G. (2004) J Comp. Neurol. 472: 24-39.