

**FIP200 Antibody**  
Catalog # ASM10531**Specification**

---

**FIP200 Antibody - Product Information**

|                   |                                |
|-------------------|--------------------------------|
| Application       | <b>WB</b>                      |
| Primary Accession | <a href="#">Q8TDY2</a>         |
| Other Accession   | <a href="#">NP_001077086.1</a> |
| Host              | <b>Rabbit</b>                  |
| Reactivity        | <b>Human, Rat</b>              |
| Clonality         | <b>Polyclonal</b>              |

**Description**

Rabbit Anti-Human FIP200 Polyclonal

**Target/Specificity**

Detects ~150 kDa.

**Other Names**

RB1CC1 Antibody, FAK family kinase-interacting protein of 200 kDa Antibody, FIP200 Antibody, KIAA0203 Antibody, RBICC Antibody, RB1-inducible coiled-coil protein 1 Antibody

**Immunogen**

Synthetic peptide from the C-terminal of Human FIP200 (aa. 1355-1366)

**Purification**

Peptide Affinity Purified

Storage **-20°C****Storage Buffer**

PBS, 50% glycerol, 0.09% sodium azide

Shipping Temperature **Blue Ice or 4°C****Certificate of Analysis**

A 1:1000 dilution of SPC-658 was sufficient for detection of FIP200 in 15 µg of Human HeLa Cell Lysates by ECL immunoblot analysis using goat anti-rabbit IgG:HRP as the secondary antibody.

**Cellular Localization**

Nucleus | Cytoplasm | Cytoplasm | Cytosol | Preautophagosomal Structure

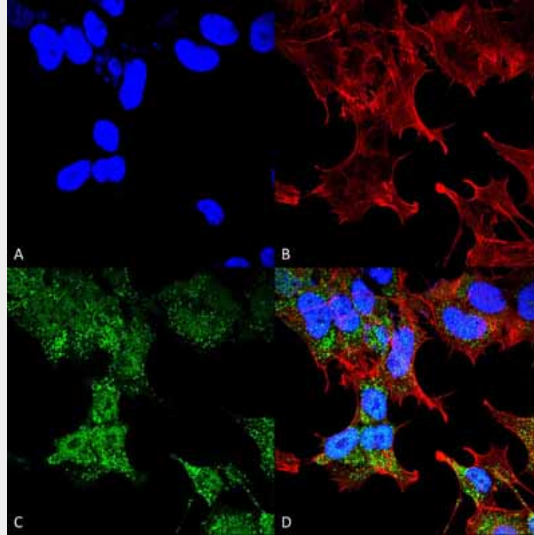
**FIP200 Antibody - Protocols**

Provided below are standard protocols that you may find useful for product applications.

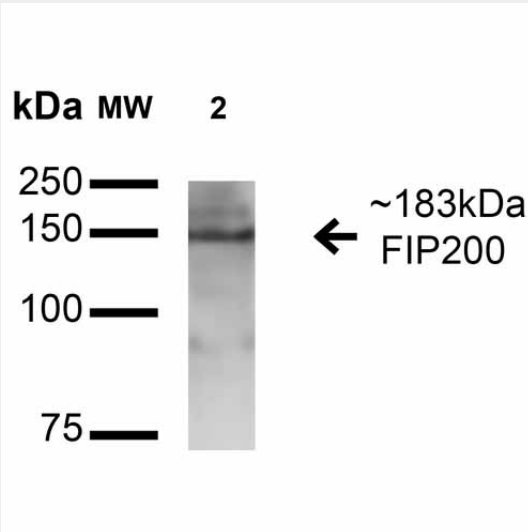
- [Western Blot](#)
- [Blocking Peptides](#)
- [Dot Blot](#)
- [Immunohistochemistry](#)
- [Immunofluorescence](#)
- [Immunoprecipitation](#)

- [Flow Cytometry](#)
- [Cell Culture](#)

**FIP200 Antibody - Images**



Immunocytochemistry/Immunofluorescence analysis using Rabbit Anti-FIP200 Polyclonal Antibody (ASM10531). Tissue: Neuroblastoma cell line (SK-N-BE). Species: Human. Fixation: 4% Formaldehyde for 15 min at RT. Primary Antibody: Rabbit Anti-FIP200 Polyclonal Antibody (ASM10531) at 1:100 for 60 min at RT. Secondary Antibody: Goat Anti-Mouse ATTO 488 at 1:200 for 60 min at RT. Counterstain: Phalloidin Texas Red F-Actin stain; DAPI (blue) nuclear stain at 1:1000, 1:5000 for 60 min at RT, 5 min at RT. Localization: Nucleus, Cytoplasm, Cytoplasm, Cytosol, Preautophagosomal Structure. Magnification: 60X. (A) DAPI (blue) nuclear stain (B) Phalloidin Texas Red F-Actin stain (C) FIP200 Antibody (D) Composite.



Western blot analysis of Rat Brain cell lysates showing detection of 183 kDa FIP200 protein using Rabbit Anti-FIP200 Polyclonal Antibody (ASM10531). Lane 1: Molecular Weight Ladder (MW). Lane 2: Rat Brain cell lysates. Load: 15 µg . Block: 5% Skim Milk in 1X TBST. Primary Antibody: Rabbit Anti-FIP200 Polyclonal Antibody (ASM10531) at 1:1000 for 1 hour at RT. Secondary Antibody: Goat Anti-Rabbit HRP at 1:2000 for 60 min at RT. Color Development: ECL solution for 6 min in RT. Predicted/Observed Size: 183 kDa.