

RP00473

Leader in Biomolecular Solutions for Life Science



Recombinant Human GM-CSF/CSF2 Protein

Catalog No.: RP00473 **Recombinant**

Sequence Information

Species	Gene ID	Swiss Prot
Human	1437	P04141

Tags

No tag

Synonyms

CSF2;GMCSF

Product Information

Source	Purification
<I>E. coli</I>	> 95% by SDS-PAGE.

Endotoxin

< 1 EU/μg of the protein by LAL method.

Formulation

Lyophilized from a 0.2 μm filtered solution of 20mM PB, 150mM NaCl, 5% Mannitol, pH 7.2. Contact us for customized product form or formulation.

Reconstitution

Reconstitute to a concentration of 0.1-0.5 mg/mL in sterile distilled water.

Background

Granulocyte-Macrophage Colony Stimulating Factor (GM-CSF) was initially characterized as a growth factor that can support the in vitro colony formation of granulocyte-macrophage progenitors. It is produced by a number of different cell types (including activated T cells, B cells, macrophages, mast cells, endothelial cells and fibroblasts) in response to cytokine of immune and inflammatory stimuli. Besides granulocyte-macrophage progenitors, GM-CSF is also a growth factor for erythroid, megakaryocyte and eosinophil progenitors. On mature hematopoietic, monocytes/ macrophages and eosinophils. GM-CSF has a functional role on non-hematopoietic cells. It can induce human endothelial cells to migrate and proliferate. Additionally, GM-CSF can also stimulate the proliferation of a number of tumor cell lines, including osteogenic sarcoma, carcinoma and adenocarcinoma cell lines.

Basic Information

Description

Recombinant Human GM-CSF/CSF2 Protein is produced by <I>E. coli</I> expression system. The target protein is expressed with sequence (Ala18-Glu144) of human GM-CSF/CSF2 (Accession #P04141) fused with an initial Met at the N-terminus.

Bio-Activity

Measured in a cell proliferation assay using TF-1 human erythroleukemic cells. The ED₅₀ for this effect is 6-30 pg/mL. The specific activity of Recombinant Human GM-CSF is approximately 1.5×10^4 IU/μg, which is calibrated against human GM-CSF WHO International Standard.

Storage

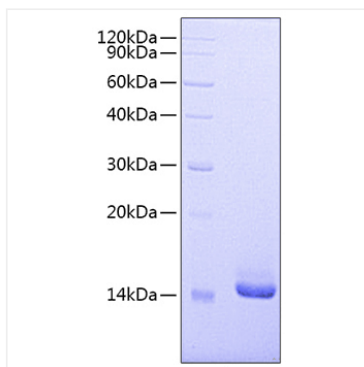
Store the lyophilized protein at -20°C to -80 °C for long term. After reconstitution, the protein solution is stable at -20 °C for 3 months, at 2-8 °C for up to 1 week. Avoid repeated freeze/thaw cycles.

Contact



www.abclonal.com

Validation Data



Recombinant Human GM-CSF/CSF2 Protein was determined by SDS-PAGE under reducing conditions with Coomassie Blue.