

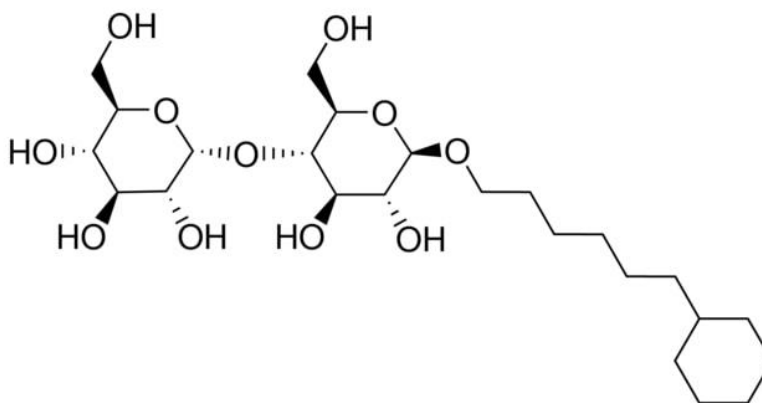
6-Cyclohexyl-1-Hexyl- β -D-Maltoside LA

(CYMAL-6 LA)

Cat # NB-19-0073-1G size: 1g

Cat # NB-19-0073-5G size: 5g

Cat # NB-19-0073-25G size: 25g



Product Information

Batch No.:	ST0919
Chemical Name:	6-Cyclohexyl-1-Hexyl- β -D-Maltoside Low Alpha, CYMAL-6 Low alpha
Batch Molecular Formula:	C ₂₄ H ₄₄ O ₁₁
Batch Molecular Weight:	508.5
CAS No.:	[228579-27-9]
Physical Appearance:	Solid
Storage:	Desiccate at -20°C

Solvent and solubility

≥ 20% (in water at 0-5°C)

Biological activity

Cyclohexyl-n-hexyl- β -D-maltoside is a detergent designed specifically for the purification and crystallization of membrane-bound proteins in their native state. Cyclohexyl-n-hexyl- β -D-maltoside has a higher CMC value than the corresponding linear chain containing the same number of carbons, providing higher hydrophobicity in a shorter effective chain length.

References

1. Crystallization of membrane proteins. C Ostermeier et al. Current opinion in structural biology, 7(5), 697-701 (1997-11-05) Davies and Watkins (1982) Brain Res 235:378

For Research use only. Not for human use.

Analytical data

<u>TEST</u>	<u>Specification</u>
CMC:	(H ₂ O) ~ 0.56 mM(2) (0.028%)
Aggregation Number:	(H ₂ O) ~ 91(2)
dn/dc:	0.1488 ml/g
Purity:	≥ 99% (by HPLC analysis)
Percent Anomer:	< 0.5 (HPLC)
Percent Alcohol:	< 0.005 Cyclohexylhexanol (HPLC)
pH:	5-8 (1% solution in water)
Conductance:	< 40 μS (10% solution in water)
Fluorescence:	<10% (0.1% solution in water at 345nm)
Absorbance of a 1% solution in water:	225 nm: < 0.1 260 nm: < 0.06 280 nm: < 0.04 340 nm: < 0.02

For Research use only. Not for human use.