

**RIP3 Antibody**  
Catalog # ASM10538**Specification**

---

**RIP3 Antibody - Product Information**

Application	<b>WB</b>
Primary Accession	<a href="#">O9Y572</a>
Other Accession	<a href="#">NP_006862.2</a>
Host	<b>Rabbit</b>
Reactivity	<b>Human, Mouse</b>
Clonality	<b>Polyclonal</b>

**Description**

Rabbit Anti-Human RIP3 Polyclonal

**Target/Specificity**

Detects ~57 kDa.

**Other Names**

RIPK3 Antibody, Receptor-interacting protein 3 Antibody, Receptor interacting protein 3 Antibody, Receptor interacting serine/threonine protein kinase 3 Antibody, RIP-3 Antibody, RIPK3\_HUMAN Antibody, Receptor-interacting serine/threonine-protein kinase 3 Antibody, RIPK 3 Antibody, RIP 3 Antibody, Receptor interacting serine threonine kinase 3 Antibody, RIP3 Antibody, RIP like protein kinase 3 Antibody, RIP-like protein kinase 3 Antibody

**Immunogen**

Synthetic peptide from the N-terminal to middle of Human RIP3

**Purification**

Peptide Affinity Purified

Storage **-20°C****Storage Buffer**

PBS, 50% glycerol, 0.09% sodium azide

Shipping Temperature

**Blue Ice or 4°C****Certificate of Analysis**

A 1:1000 dilution of SPC-672 was sufficient for detection of RIP3 in 15 µg of mouse brain cell lysates by ECL immunoblot analysis using goat anti-rabbit IgG:HRP as the secondary antibody.

**Cellular Localization**

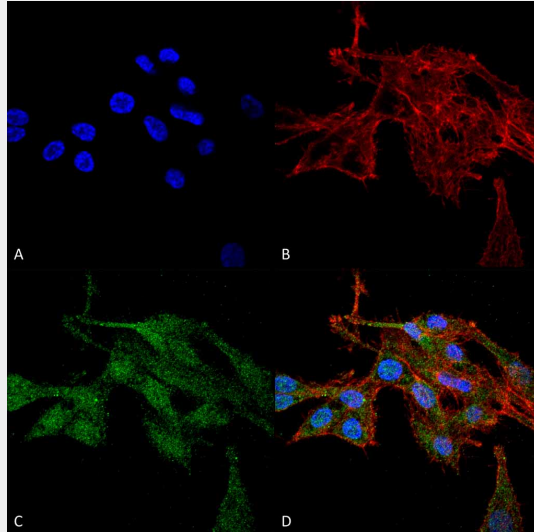
Cytoplasm | Cytosol | Cell Membrane | Mitochondrion

**RIP3 Antibody - Protocols**

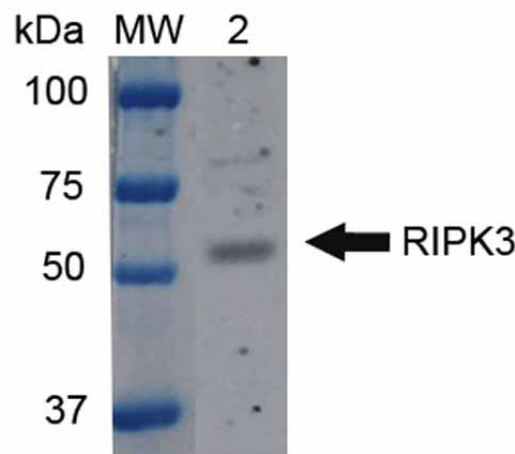
Provided below are standard protocols that you may find useful for product applications.

- [Western Blot](#)
- [Blocking Peptides](#)
- [Dot Blot](#)

- [Immunohistochemistry](#)
- [Immunofluorescence](#)
- [Immunoprecipitation](#)
- [Flow Cytometry](#)
- [Cell Culture](#)

**RIP3 Antibody - Images**


Immunocytochemistry/Immunofluorescence analysis using Rabbit Anti-RIP3 Polyclonal Antibody (ASM10538). Tissue: Colon carcinoma cell line (RKO). Species: Human. Fixation: 4% Formaldehyde for 15 min at RT. Primary Antibody: Rabbit Anti-RIP3 Polyclonal Antibody (ASM10538) at 1:100 for 60 min at RT. Secondary Antibody: Goat Anti-Rabbit ATTO 488 at 1:100 for 60 min at RT. Counterstain: Phalloidin Texas Red F-Actin stain; DAPI (blue) nuclear stain at 1:1000, 1:5000 for 60 min at RT, 5 min at RT. Localization: Cytoplasm. Magnification: 60X. (A) DAPI nuclear stain. (B) Phalloidin Texas Red F-Actin stain. (C) RIP3 Antibody. (D) Composite.



Western blot analysis of Mouse Brain cell lysates showing detection of ~56.9 kDa RIP3 protein using Rabbit Anti-RIP3 Polyclonal Antibody (ASM10538). Lane 1: Molecular Weight Ladder (MW). Lane 2: Mouse Brain cell lysates. Load: 15 µg. Block: 5% Skim Milk in 1X TBST. Primary Antibody: Rabbit Anti-RIP3 Polyclonal Antibody (ASM10538) at 1:1000 for 2 hours at RT. Secondary Antibody: Goat Anti-Rabbit IgG: HRP at 1:1000 for 60 min at RT. Color Development: ECL solution

for 6 min in RT. Predicted/Observed Size: ~56.9 kDa.