

AC021

Leader in Biomolecular Solutions for Life Science



β-Tubulin Mouse mAb

Catalog No.: AC021 **65 Publications**

Basic Information

Observed MW

50kDa

Calculated MW

50kDa

Category

SMab Recombinant Monoclonal
Antibody

Applications

WB,IHC-P,IF/ICC,IP,ELISA

Cross-Reactivity

Human,Mouse,Rat,Hamster,Monkey,Goat,Chlamydomonas Reinhardtii

CloneNo number

AMC0498

Recommended Dilutions

WB	1:5000 - 1:10000
IHC-P	1:50 - 1:200
IF/ICC	1:50 - 1:200
IP	0.5ug-4ug antibody for 200ug-400ug extracts of whole cells

Contact

 www.abclonal.com

Background

This gene encodes a beta tubulin protein. This protein forms a dimer with alpha tubulin and acts as a structural component of microtubules. Mutations in this gene cause cortical dysplasia, complex, with other brain malformations 6. Alternative splicing results in multiple splice variants. There are multiple pseudogenes for this gene on chromosomes 1, 6, 7, 8, 9, and 13.

Immunogen Information

Gene ID	Swiss Prot
203068	P07437

Immunogen

Recombinant protein of human β-Tubulin

Synonyms

M40; TUBB1; TUBB5; CDCBM6; CSCSC1; OK/SW-cl.56; β-Tubulin

Product Information

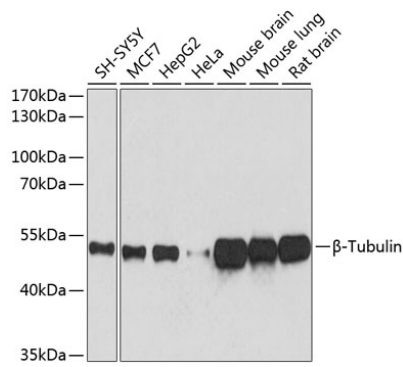
Source	Isotype	Purification
Mouse	IgG1	Affinity purification

Storage

Store at -20°C. Avoid freeze / thaw cycles.

Buffer: PBS with 0.02% sodium azide,1% BSA,50% glycerol,pH7.3.

Validation Data



Western blot analysis of various lysates using β -Tubulin Mouse mAb (AC021) at 1:5000 dilution.

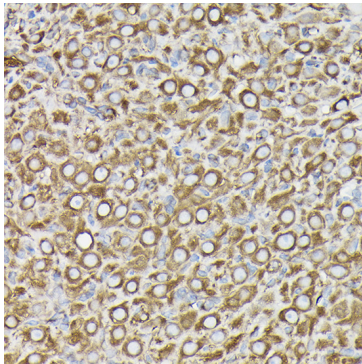
Secondary antibody: HRP-conjugated Goat anti-Mouse IgG (H+L) (AS003) at 1:10000 dilution.

Lysates/proteins: 25 μ g per lane.

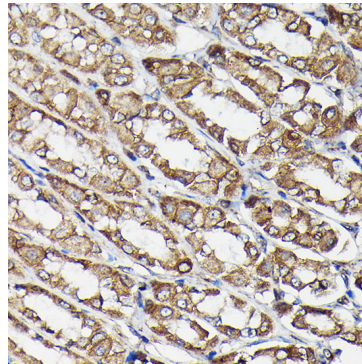
Blocking buffer: 3% nonfat dry milk in TBST.

Detection: ECL Basic Kit (RM00020).

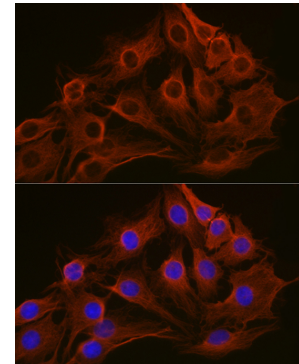
Exposure time: 10s.



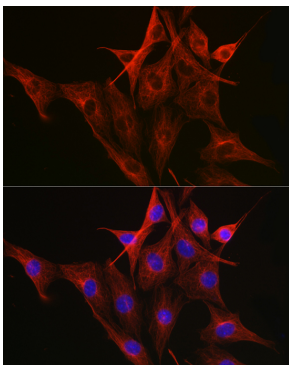
Immunohistochemistry analysis of paraffin-embedded Rat ovary using β -Tubulin Mouse mAb (AC021) at dilution of 1:100 (40x lens). High pressure antigen retrieval performed with 0.01M Citrate Bufferr (pH 6.0) prior to IHC staining.



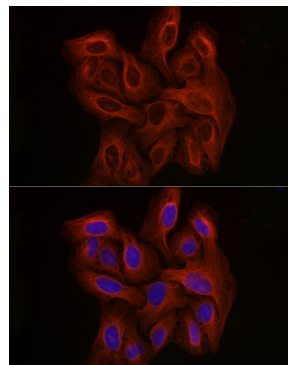
Immunohistochemistry analysis of paraffin-embedded Rat stomach using β -Tubulin Mouse mAb (AC021) at dilution of 1:100 (40x lens). High pressure antigen retrieval performed with 0.01M Citrate Bufferr (pH 6.0) prior to IHC staining.



Immunofluorescence analysis of C6 cells using β -Tubulin Mouse mAb (AC021) at dilution of 1:100 (40x lens). Blue: DAPI for nuclear staining.



Immunofluorescence analysis of NIH-3T3 cells using β -Tubulin Mouse mAb (AC021) at dilution of 1:100 (40x lens). Blue: DAPI for nuclear staining.



Immunofluorescence analysis of U-2 OS cells using β -Tubulin Mouse mAb (AC021) at dilution of 1:100 (40x lens). Blue: DAPI for nuclear staining.