

Bovine Aortic Endothelial Cells

Cat# NB-11-0041

Introduction

Primary Bovine Aortic Endothelial Cells (NB-11-0041) are pooled primary isolates from eight individual donor veal calf descending aortae.

Companion Products

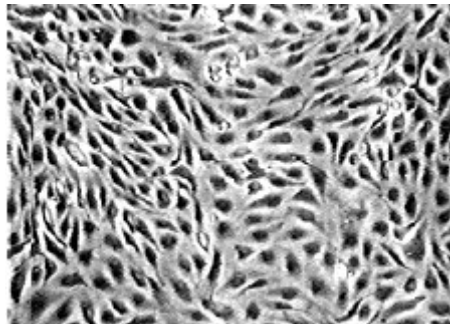
These cells were originated using CSC Complete Serum-Free Medium (NB-11-0061), are available at < 12 Cumulative Population Doublings (CPD) *in vitro* [Passage 3] and were cryopreserved in aliquots of $\sim 1.5 \times 10^6$ cells. This vial will initiate a Passage 4 cell culture in a 75cm² flask.

These cells are available in both cryopreserved vials and in 75cm² proliferating culture flasks.

Cell initiation

Each vial or flask of cells is shipped to Customer with Bac-Off® (antibiotic) and CultureBoost (animal derived growth factors) or Cultureboost-R (human recombinant growth factors) at no additional cost.

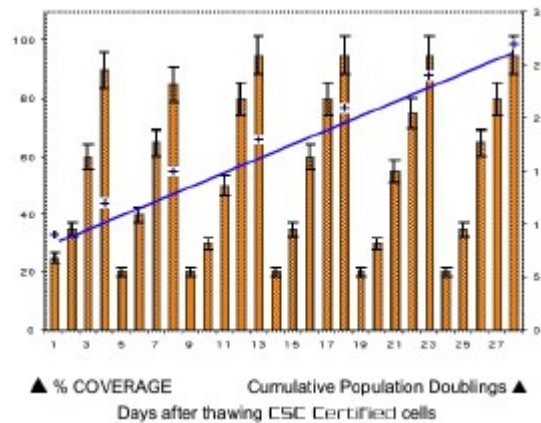
These cells are qualified for use with all recombinant and non-recombinant versions of CSC Serum-Free and Serum-Containing (10% by volume) Complete Medium Kits; CSC Attachment Factor™ (NB-11-0069); CSC Passage Reagent Group™ (NB-11-0076) and CSC Cell Freezing Medium (NB-11-0075).



Bovine Aortic Endothelial Cells Catalog NB-11-0041
Passage 5 40X Phase Contrast Digital Image

Primary Bovine Aortic Endothelial Cell System Proliferation Assay

- 9-28 CPD *in vitro* / Passages 3-8
- Catalogue NB-11-0041 Primary Bovine Aortic Endothelial Cells
- Catalogue NB-11-0046 Complete Serum Containing Medium Kit
- Catalogue NB-11-0076 Passage Reagent Group™ (PRG)
- CSC specifies bovine serum and serum-derived components 100% traceable to cattle processed in the US at USDA inspected facilities.



Standard Tests

TEST	RESULTS
HIV PCR TEST (frozen cell pool by CLIA Licensed Clinical Lab)	Negative
Test of frozen cells for Mycoplasma spp. (ATCC method by CLIA Licensed Clinical Lab)	Negative

USDA Form 16-4 (Declaration Regarding health of the Donor Animal) May be required for some international orders. If Recipient's government requires a 16-4 Declaration for animal products, Recipient will be responsible for obtaining information from his/her Customs Officials for use by the USDA in determining whether a Form 16-4 can be issued.