

**FUNDC1 Antibody**  
Catalog # ASM10519

**Specification**

---

**FUNDC1 Antibody - Product Information**

Application	<b>WB</b>
Primary Accession	<a href="#">Q8IVP5</a>
Other Accession	<a href="#">NP_776155.1</a>
Host	<b>Rabbit</b>
Reactivity	<b>Mouse, Rat</b>
Clonality	<b>Polyclonal</b>

**Description**

Rabbit Anti-Human FUNDC1 Polyclonal

**Target/Specificity**

Detects ~17 kDa.

**Other Names**

FUNDC1 Antibody, FUN14 domain-containing protein 1 Antibody

**Immunogen**

Synthetic peptide from the N-terminal of Human FUNDC1

**Purification**

Peptide Affinity Purified

Storage **-20°C**

**Storage Buffer**

PBS, 50% glycerol, 0.09% sodium azide

Shipping Temperature **Blue Ice or 4°C**

**Certificate of Analysis**

A 1:1000 dilution of SPC-638 was sufficient for detection of FUNDC1 in 15 µg of rat liver cell lysates by ECL immunoblot analysis using goat anti-rabbit IgG:HRP as the secondary antibody.

**Cellular Localization**

Mitochondrion Outer Membrane | Multi-Pass Membrane Protein

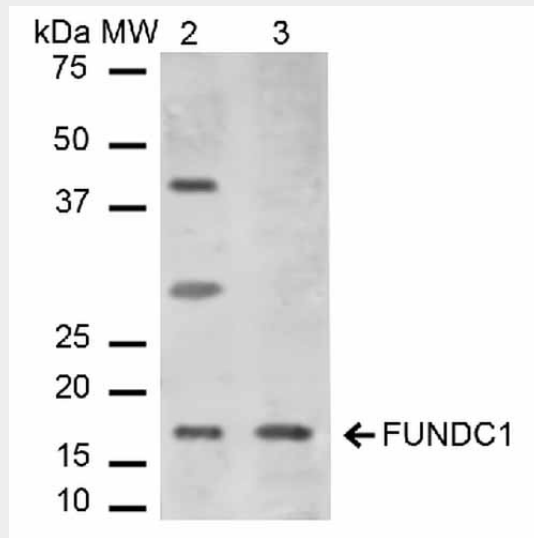
**FUNDC1 Antibody - Protocols**

Provided below are standard protocols that you may find useful for product applications.

- [Western Blot](#)
- [Blocking Peptides](#)
- [Dot Blot](#)
- [Immunohistochemistry](#)
- [Immunofluorescence](#)
- [Immunoprecipitation](#)
- [Flow Cytometry](#)

- [Cell Culture](#)

## FUNDC1 Antibody - Images



Western blot analysis of Mouse, Rat Liver cell lysates showing detection of ~17.2 kDa FUNDC1 protein using Rabbit Anti-FUNDC1 Polyclonal Antibody (ASM10519). Lane 1: Molecular Weight Ladder (MW). Lane 2: Mouse Liver cell lysates. Lane 3: Rat Liver cell lysates. Load: 15  $\mu$ g. Block: 5% Skim Milk in 1X TBST. Primary Antibody: Rabbit Anti-FUNDC1 Polyclonal Antibody (ASM10519) at 1:1000 for 2 hours at RT. Secondary Antibody: Goat Anti-Rabbit IgG: HRP at 1:2000 for 60 min at RT. Color Development: ECL solution for 6 min in RT. Predicted/Observed Size: ~17.2 kDa.