

**ULK2 Antibody**  
Catalog # ASM10521

**Specification**

---

**ULK2 Antibody - Product Information**

Application	<b>WB</b>
Primary Accession	<a href="#">Q8IYT8</a>
Other Accession	<a href="#">NP_001136082.1</a>
Host	<b>Rabbit</b>
Reactivity	<b>Human, Rat</b>
Clonality	<b>Polyclonal</b>

**Description**

Rabbit Anti-Human ULK2 Polyclonal

**Target/Specificity**

Detects ~100 kDa.

**Other Names**

Serine/threonine-protein kinase ULK2 Antibody, EC:2.7.11.1 Antibody, Unc 51 (C. elegans) like kinase 2 Antibody, ULK2\_HUMAN Antibody, KIAA0623 Antibody, ATG1B Antibody, Serine/threonine protein kinase ULK2 Antibody, Unc-51-like kinase 2 Antibody, Unc 51 like autophagy activating kinase 2 Antibody, Unc51.2 Antibody, ULK2 Antibody, Unc 51 like kinase 2 Antibody,

**Immunogen**

Synthetic peptide from the mid-protein of Human ULK2 (aa. 558-569)

**Purification**

Peptide Affinity Purified

Storage **-20°C**

**Storage Buffer**

PBS, 50% glycerol, 0.09% sodium azide

Shipping Temperature **Blue Ice or 4°C**

**Certificate of Analysis**

A 1:1000 dilution of SPC-641 was sufficient for detection of ULK2 in 15 µg of Human HeLa Cell Lysates by ECL immunoblot analysis using goat anti-rabbit IgG:HRP as the secondary antibody.

**Cellular Localization**

Cytoplasmic Vesicle Membrane | Peripheral Membrane Protein

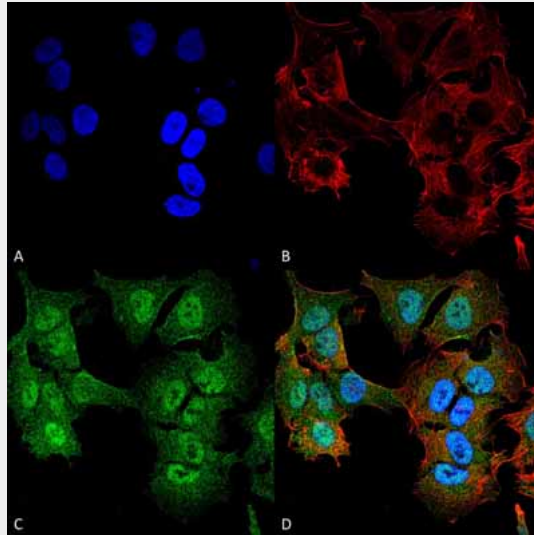
**ULK2 Antibody - Protocols**

Provided below are standard protocols that you may find useful for product applications.

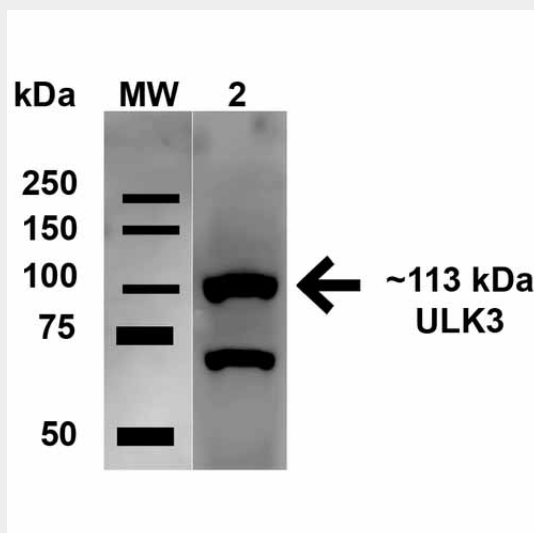
- [Western Blot](#)
- [Blocking Peptides](#)
- [Dot Blot](#)
- [Immunohistochemistry](#)

- [Immunofluorescence](#)
- [Immunoprecipitation](#)
- [Flow Cytometry](#)
- [Cell Culture](#)

**ULK2 Antibody - Images**



Immunocytochemistry/Immunofluorescence analysis using Rabbit Anti-ULK2 Polyclonal Antibody (ASM10521). Tissue: Neuroblastoma cell line (SK-N-BE). Species: Human. Fixation: 4% Formaldehyde for 15 min at RT. Primary Antibody: Rabbit Anti-ULK2 Polyclonal Antibody (ASM10521) at 1:100 for 60 min at RT. Secondary Antibody: Goat Anti-Mouse ATTO 488 at 1:200 for 60 min at RT. Counterstain: Phalloidin Texas Red F-Actin stain; DAPI (blue) nuclear stain at 1:1000, 1:5000 for 60 min at RT, 5 min at RT. Localization: Cytoplasmic Vesicle Membrane, Peripheral Membrane Protein. Magnification: 60X. (A) DAPI (blue) nuclear stain (B) Phalloidin Texas Red F-Actin stain (C) ULK2 Antibody (D) Composite.



Western blot analysis of Human HeLa cell lysates showing detection of 112.7 kDa ULK2 protein using Rabbit Anti-ULK2 Polyclonal Antibody (ASM10521). Lane 1: Molecular Weight Ladder (MW). Lane 2: Human HeLa cell lysates. Load: 15 µg . Block: 5% Skim Milk in 1X TBST. Primary Antibody: Rabbit Anti-ULK2 Polyclonal Antibody (ASM10521) at 1:1000 for 1 hour at RT. Secondary Antibody: Goat Anti-Rabbit HRP at 1:2000 for 60 min at RT. Color Development: ECL solution for 6 min in RT.

Predicted/Observed Size: 112.7 kDa. Other Band(s): ~70 kDa.

### **ULK2 Antibody - Background**

UNC-51 like kinase 2 (ULK2) is widely expressed and contains an amino-terminal kinase domain followed by a central proline-serine rich domain and a highly conserved carboxy-terminal domain. It has been linked to axon growth and is essential for autophagy. Structurally, ULK2 is similar to ATG1.

### **ULK2 Antibody - References**

1. Okazaki N., et al. (2000) Brain Res Mol Brain Res. 85: 1-12.
2. Young A.R., et al. (2006) J Cell Sci. 119: 3888-900.
3. Kamada Y., et al. (2000) J Cell Biol. 150: 1507-13.
4. Lee S.B, et al. (2007) EMBO Rep. 8: 360-5.
5. Hara T., et al. (2008) J Cell Biol. 181: 497-510.