

**alpha Tubulin Antibody**  
Catalog # ASM10551**Specification**

---

**alpha Tubulin Antibody - Product Information**

Application	<b>WB</b>
Primary Accession	<a href="#">P68363</a>
Other Accession	<a href="#">NP_006073.2</a>
Host	<b>Rabbit</b>
Reactivity	<b>Human</b>
Clonality	<b>Polyclonal</b>

**Description**

Rabbit Anti-Human alpha Tubulin Antibody Polyclonal

**Target/Specificity**

Detects ~50 kDa.

**Other Names**

Alpha-tubulin ubiquitous Antibody, Alpha tubulin ubiquitous Antibody, Tubulin alpha 1B chain Antibody, Tubulin alpha ubiquitous Antibody, Tubulin K-alpha-1 Antibody, TBA1B\_HUMAN Antibody, K alpha 1 Antibody, Tubulin alpha ubiquitous chain Antibody, Tubulin alpha 1B Antibody, TUBA1B Antibody, Tubulin alpha-1B chain Antibody, Tubulin alpha-ubiquitous chain Antibody, Tubulin K alpha 1 Antibody

**Immunogen**

Synthetic peptide of Human alpha-Tubulin

**Purification**

Peptide Affinity Purified

Storage **-20°C****Storage Buffer**

PBS, 50% glycerol, 0.09% sodium azide

Shipping Temperature

**Blue Ice or 4°C****Certificate of Analysis**

A 1:1000 dilution of SPC-692 was sufficient for detection of alpha-Tubulin in 15 µg of Human HeLa Cell Lysates by ECL immunoblot analysis using goat anti-rabbit IgG:HRP as the secondary antibody.

**Cellular Localization**

Cytoplasm | Cytoskeleton

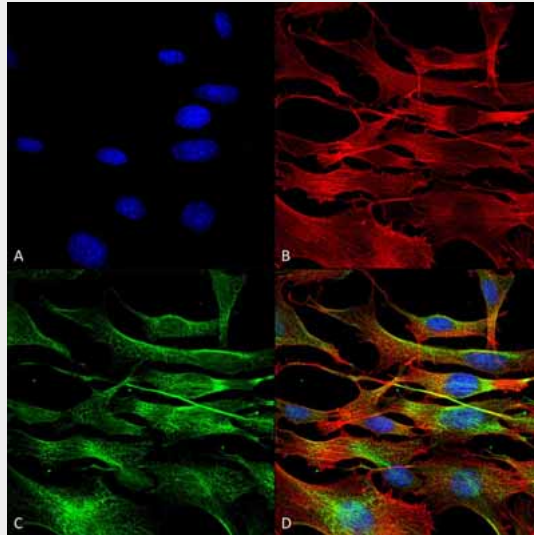
**alpha Tubulin Antibody - Protocols**

Provided below are standard protocols that you may find useful for product applications.

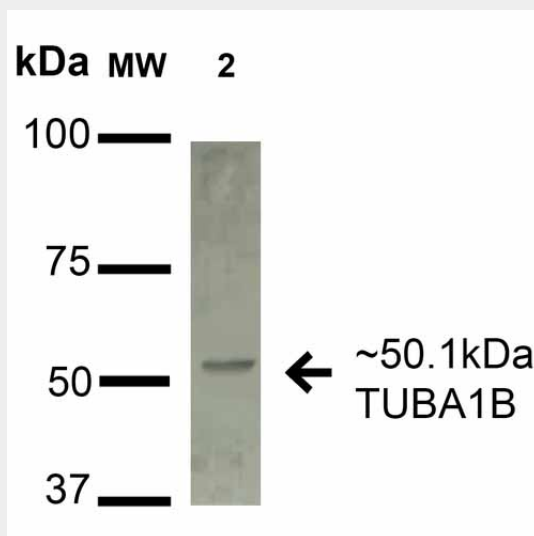
- [Western Blot](#)
- [Blocking Peptides](#)

- [Dot Blot](#)
- [Immunohistochemistry](#)
- [Immunofluorescence](#)
- [Immunoprecipitation](#)
- [Flow Cytometry](#)
- [Cell Culture](#)

**alpha Tubulin Antibody - Images**

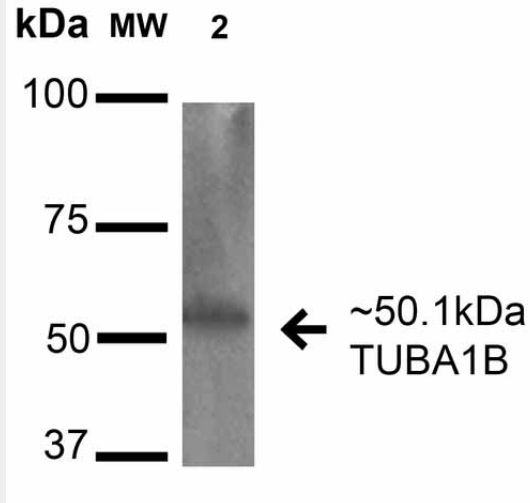


Immunocytochemistry/Immunofluorescence analysis using Rabbit Anti-alpha Tubulin Polyclonal Antibody (ASM10551). Tissue: NIH 3T3 (Mouse Fibroblast cell line). Species: Mouse. Fixation: 4% Formaldehyde for 15 min at RT. Primary Antibody: Rabbit Anti-alpha Tubulin Polyclonal Antibody (ASM10551) at 1:100 for 60 min at RT. Secondary Antibody: Goat Anti-Rabbit ATTO 488 at 1:200 for 60 min at RT. Counterstain: Phalloidin Texas Red F-Actin stain; DAPI (blue) nuclear stain at 1:1000, 1:5000 for 60 min at RT, 5 min at RT. Localization: Cytoplasm, Cytoskeleton. Magnification: 60X. (A) DAPI (blue) nuclear stain (B) Phalloidin Texas Red F-Actin stain (C) alpha Tubulin Antibody (D) Composite.



Western blot analysis of Human A549 cell lysates showing detection of 50.1 kDa alpha Tubulin Antibody protein using Rabbit Anti-alpha Tubulin Antibody Polyclonal Antibody (ASM10551). Lane 1: Molecular Weight Ladder (MW). Lane 2: Human A549 cell lysates. Load: 15 µg . Block: 2% BSA

and 2% Skim Milk in 1X TBST. Primary Antibody: Rabbit Anti-alpha Tubulin Antibody Polyclonal Antibody (ASM10551) at 1:1000 for 16 hours at 4°C. Secondary Antibody: Goat Anti-Rabbit IgG: HRP at 1:2000 for 60 min at RT. Color Development: ECL solution for 6 min in RT. Predicted/Observed Size: 50.1 kDa.



Western blot analysis of Human HeLa cell lysates showing detection of 50.1 kDa alpha Tubulin Antibody protein using Rabbit Anti-alpha Tubulin Antibody Polyclonal Antibody (ASM10551). Lane 1: Molecular Weight Ladder (MW). Lane 2: Human HeLa cell lysates. Load: 15 µg . Block: 5% Skim Milk in 1X TBST. Primary Antibody: Rabbit Anti-alpha Tubulin Antibody Polyclonal Antibody (ASM10551) at 1:1000 for 16 hours at 4°C. Secondary Antibody: Goat-Anti-Rabbit IgG: HRP at 1:2000 for 60 min at RT. Color Development: TMB. Predicted/Observed Size: 50.1 kDa.