

**REEP1 Antibody**  
**REEP1 Antibody, Clone S345-51**  
**Catalog # ASM10312**

**Specification**

---

**REEP1 Antibody - Product Information**

Application	<b>WB</b>
Primary Accession	<a href="#">O8BGH4</a>
Other Accession	<a href="#">NP_848723.1</a>
Host	<b>Mouse</b>
Isotype	<b>IgG2B</b>
Reactivity	<b>Human, Mouse, Rat</b>
Clonality	<b>Monoclonal</b>

**Description**

Mouse Anti-Mouse REEP1 Monoclonal IgG2B

**Target/Specificity**

Detects ~22kDa.

**Other Names**

Receptor expression-enhancing protein 1 Antibody, C2orf23 Antibody, D6Ert253e Antibody, rcG\_56072 Antibody, Reep1 Antibody, SPG31 Antibody

**Immunogen**

Fusion protein amino acids 111-201 of mouse REEP1

**Purification**

Protein G Purified

Storage **-20°C**

**Storage Buffer**

PBS pH7.4, 50% glycerol, 0.1% sodium azide

Shipping Temperature **Blue Ice or 4°C**

**Certificate of Analysis**

A 1:100 dilution of SMC-480 was sufficient for detection of REEP1 in 20 µg of mouse brain lysate by ECL immunoblot analysis using Goat anti-mouse IgG:HRP as the secondary antibody.

**Cellular Localization**

Mitochondrion | Mitochondrion Membrane | Endoplasmic Reticulum | Endoplasmic Reticulum Membrane

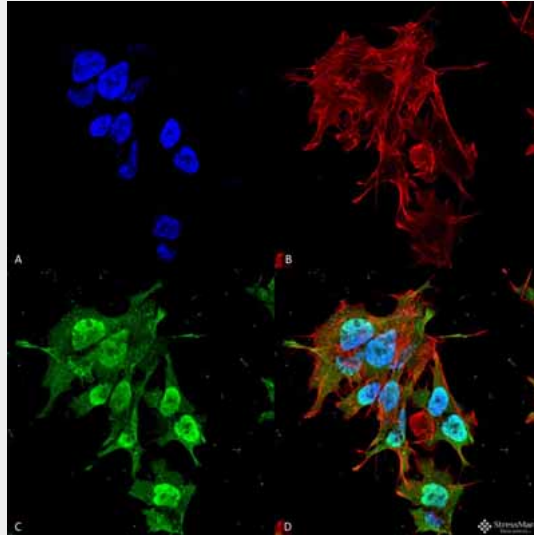
**REEP1 Antibody - Protocols**

Provided below are standard protocols that you may find useful for product applications.

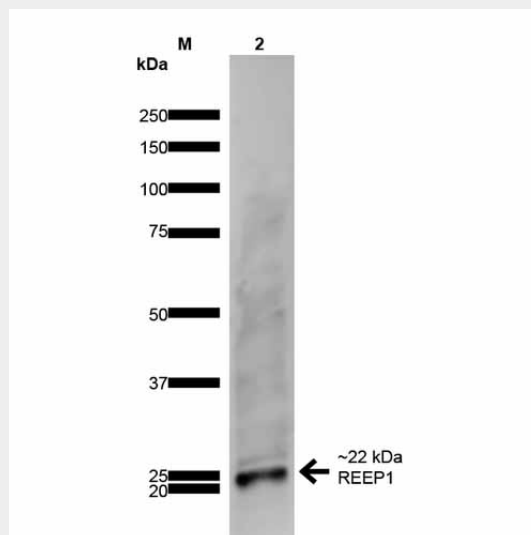
- [Western Blot](#)
- [Blocking Peptides](#)
- [Dot Blot](#)

- [Immunohistochemistry](#)
- [Immunofluorescence](#)
- [Immunoprecipitation](#)
- [Flow Cytometry](#)
- [Cell Culture](#)

**REEP1 Antibody - Images**



Immunocytochemistry/Immunofluorescence analysis using Mouse Anti-REEP1 Monoclonal Antibody, Clone S345-51 (ASM10312). Tissue: Neuroblastoma cell line (SK-N-BE). Species: Human. Fixation: 4% Formaldehyde for 15 min at RT. Primary Antibody: Mouse Anti-REEP1 Monoclonal Antibody (ASM10312) at 1:100 for 60 min at RT. Secondary Antibody: Goat Anti-Mouse ATTO 488 at 1:100 for 60 min at RT. Counterstain: Phalloidin Texas Red F-Actin stain; DAPI (blue) nuclear stain at 1:1000; 1:5000 for 60 min RT, 5 min RT. Localization: Cytoplasm, Nucleus. Magnification: 60X. (A) DAPI (blue) nuclear stain (B) Phalloidin Texas Red F-Actin stain (C) REEP1 Antibody (D) Composite.



Western Blot analysis of Rat Brain showing detection of ~22 kDa REEP1 protein using Mouse Anti-REEP1 Monoclonal Antibody, Clone S345-51 (ASM10312). Lane 1: MW Ladder. Lane 2: Rat Brain. Load: 20 µg. Block: 2% GE Healthcare Blocker for 1 hour at RT. Primary Antibody: Mouse Anti-REEP1 Monoclonal Antibody (ASM10312) at 1:1000 for 16 hours at 4°C. Secondary Antibody:

Goat Anti-Mouse IgG: HRP at 1:200 for 1 hour at RT. Color Development: ECL solution for 6 min at RT. Predicted/Observed Size: ~22 kDa.

### **REEP1 Antibody - Background**

REEP1 (receptor expression-enhancing protein 1), is a 201 amino acid multi-pass mitochondrion membrane protein that belongs to the DP1 family. REEP1 interacts with odorant receptor proteins and may enhance the cell surface expression of odorant receptors (1, 2). It is also required for endoplasmic-reticulum network formation shaping and remodeling by linking ER tubules to the cytoskeleton (2). Mutations in the REEP1 gene are a common cause of hereditary spastic paraplegia (HSP). Mutations in the REEP1 gene also cause spastic paraplegia autosomal dominant type 31, a neurodegenerative disorder (3).

### **REEP1 Antibody - References**

1. Genes and mapped phenotypes. (n.d.). Retrieved March 11, 2015, from <http://www.ncbi.nlm.nih.gov/gene/65055>
2. Park S.H., Zhu P.P., Parker R.L. Blackstone C. (2010) J Clin Invest. 120(4): 1097-1110.
3. REEP1 - Receptor expression-enhancing protein 1 - Homo sapiens (Human). (n.d.). Retrieved March 11, 2015, from <http://www.uniprot.org/uniprot/Q9H902>