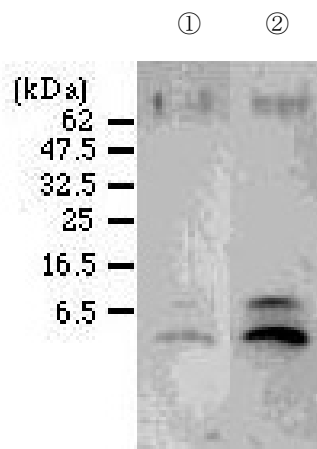




Anti Human S14G-Humanin Polyclonal Antibody

| | |
|---------------------|---|
| Package Size | 25 μ g (100 μ L/vial) |
| Format | Rabbit polyclonal antibody 0.25mg/mL |
| Buffer | PBS [containing 2% Block Ace as a stabilizer, 0.1% Proclin as a bacteriostat] |
| Storage | Below -20°C |
| Purification method | This antibody was purified from rabbit serum immunized with synthesized partial peptide of human S14G-Humanin by peptide affinity chromatography. |
| Working dilution | Western Blotting : 0.1 μ g/mL |



Western blotting

Sample : 100pmol/lane

- ① Humanin peptide
- ② S14G-Humanin peptide

Preparation of antibodies and instruction :

Dr. Nishimoto I. and Dr. Hashimoto Y. at Department of Pharmacology and Neurosciences, Keio University School of Medicine



Anti Human S14G-Humanin Polyclonal Antibody

【Reference】

1. Hashimoto Y, et al. :Proc. Natl. Acad. Sci. USA ,2001,98,6336-41
2. Hashimoto Y, et al. :Biochem. Biophys. Res. Commun. 2001,283,460-468
3. Hashimoto Y, et al. :J.Neurosci.2001,21,9235-9245
4. Tajima H, et al. :Neurosci. Lett. 2002,324:227-31
5. Terashita K, et al. :J Neurochem. 2003 Jun;85(6)1521-38

Manufacturer



Medicinal Chemistry Pharmaceutical Co., Ltd.

Kobe Research Institute

7-1-14 Minatojimaminami-machi, Chuo-ku, Kobe, Japan 650-0047

Telephone: +81-78-945-7075 FAX:+81-78-306-0694

URL:<https://soyaku.co.jp/english/> tech-kobe@soyaku.co.jp

Previous manufacturer



Trans Genic Inc.