

SOD (Cu/Zn) Antibody
Catalog # ASM10378**Specification**

SOD (Cu/Zn) Antibody - Product Information

Application	IHC, WB
Primary Accession	P00441
Other Accession	NP_000445.1
Host	Rabbit
Reactivity	Insect, Human, Mouse, Rat, Rabbit, Hamster, Monkey, Pig, Bovine, Xenopus, Dog, Fish, Sheep
Clonality	Polyclonal

Description

Rabbit Anti-Human SOD (Cu/Zn) Polyclonal

Target/Specificity

Detects ~23kDa (human) and ~19kDa (other species).

Other Names

Superoxide dismutase1 Antibody, ALS1 Antibody, IPOA Antibody, SOD1 Antibody, SOD2 Antibody, SODC Antibody

Immunogen

Human Cu/Zn SOD

Purification

Protein A Purified

Storage **-20°C****Storage Buffer**

PBS pH7.0, 50% glycerol, 0.09% sodium azide

Shipping Temperature **Blue Ice or 4°C****Certificate of Analysis**

0.2 µg/ml of SPC-116 was sufficient for detection of Cu/Zn SOD in 20 µg of HeLa cell lysate by colorimetric immunoblot analysis using Goat anti-rabbit IgG:AP as the secondary antibody.

Cellular Localization

Cytoplasm

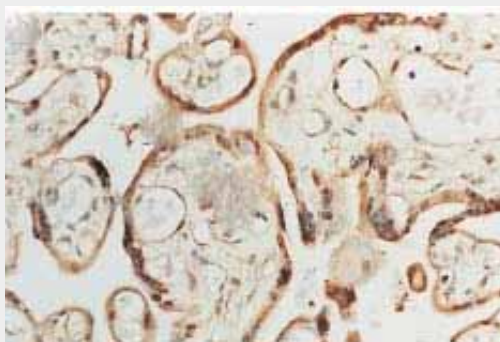
SOD (Cu/Zn) Antibody - Protocols

Provided below are standard protocols that you may find useful for product applications.

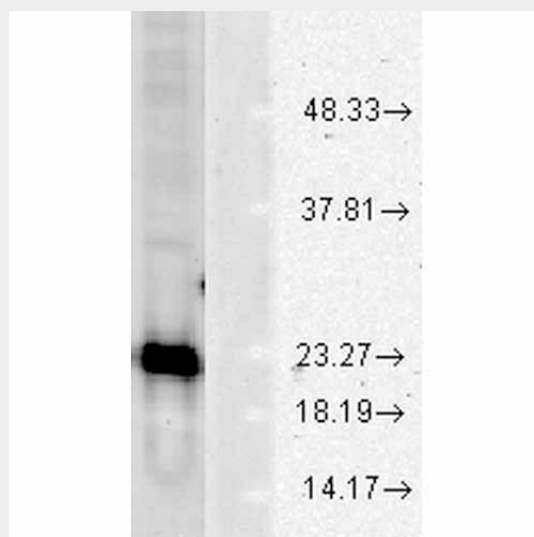
- [Western Blot](#)
- [Blocking Peptides](#)
- [Dot Blot](#)
- [Immunohistochemistry](#)

- [Immunofluorescence](#)
- [Immunoprecipitation](#)
- [Flow Cytometry](#)
- [Cell Culture](#)

SOD (Cu/Zn) Antibody - Images



Immunohistochemistry analysis using Rabbit Anti-SOD1 Polyclonal Antibody (ASM10378). Tissue: Placenta. Species: Human. Primary Antibody: Rabbit Anti-SOD1 Polyclonal Antibody (ASM10378) at 1:100. Courtesy of: Courtesy of Joan Telfer, University of Glasgow.



Western blot analysis of Human Cell line lysates showing detection of SOD1 protein using Rabbit Anti-SOD1 Polyclonal Antibody (ASM10378). Load: 15 μ g protein. Block: 1.5% BSA. Primary Antibody: Rabbit Anti-SOD1 Polyclonal Antibody (ASM10378) at 1:1000 for 2 hours at RT. Secondary Antibody: Donkey Anti-Rabbit IgG: HRP for 1 hour at RT.

SOD (Cu/Zn) Antibody - Background

Superoxide dismutase (SOD) is an endogenously produced intracellular enzyme present in almost every cell in the body (3). It works by catalyzing the dismutation of the superoxide radical O_2^- to O_2 and H_2O_2 , which are then metabolized to H_2O and O_2 by catalase and glutathione peroxidase (2,5). In general, SODs play a major role in antioxidant defense mechanisms (4). There are two main types of SOD in mammalian cells. One form (SOD1) contains Cu and Zn ions as a homodimer and exists in the cytoplasm. The two subunits of 16 kDa each are linked by two cysteines forming an intra-subunit disulphide bridge (3). The second form (SOD2) is a manganese containing enzyme and resides in the mitochondrial matrix. It is a homotetramer of 80 kDa. The third form (SOD3 or EC-SOD) is like SOD1 in that it contains Cu and Zn ions, however it is distinct in that it is a homotetramer, with a mass of 30 kDa and it exists only in the extra-cellular space (7).

SOD3 can also be distinguished by its heparin-binding capacity (1).

SOD (Cu/Zn) Antibody - References

1. Adachi T., et al. (1992). Clin. Chim. Acta. 212: 89-102.
2. Barrister J.V., et al. (1987). Crit. Rev. Biochem. 22:111-180.
3. Furukawa Y., O'Halloran T. (2006). Antioxidants & Redo Signaling. Vol 8, No 5,6.
4. Gao B., et al. (2003). Am J Physiol Lung Cell Mol Physiol 284: L917-L925.
5. Hassan H.M. (1988). Free Radical Biol. Med. 5: 377-385.
6. Kurobe N., et al. (1990) Biomedical Research. 11: 187-194
7. Wispe J.R., et al. (1989) BBA. 994: 30-36.
8. Xiao-Hong Liu., et al. (1993) Brain Research. 625: 29-37.