



# ProteinExpress

ProteinExpress Co., Ltd.  
Chiba University Inohana Innovation Plaza  
1-8-15, Inohana, Chuo-ku,  
Chiba-shi, Chiba 260-0856, Japan  
Tel: +81-43-202-5755, Fax: +81-43-202-5756  
E-mail: [antibody@proteinexpress.co.jp](mailto:antibody@proteinexpress.co.jp)  
Web: [www.proteinexpress.co.jp](http://www.proteinexpress.co.jp)

## Anti-Mouse SCRIB (KIAA0147) Polyclonal Antibody, Rabbit

**Code # :** MK01470910 [FAF00428], (Lot# XXX)

**Gene :** mouse Scribbled homolog (mSCRIB, mKIAA0147)

**Immunogen :** GX0312 (GST-fusion protein, 143 amino acids)  
ALRAQMVLKSKSQEGRGKRGLERLAEAPSPAPTPSPTPLEDFGLQTSASPGRLPLSGKKFDYR  
AFAALPSSRPVYDIQSPDFVEELRTLLEASPSPGSQEEDGEVALVLLGRPSPGAVGPEDMTLCSS  
RRSVRPGRRGLGPVPS

**Format :** Affinity Purified Rabbit IgG

**Constitution :** PBS containing with 50% glycerol and 0.02% of NaN<sub>3</sub>

**Quantity :** 50 µg (250 µL)

**Specificity :** Specific to recombinant protein GX0312. This antibody detects mSCRIB protein. It also recognizes human SCRIB protein. Details are shown in the InGaP database. (<http://webcreate.kazusa.or.jp/create/index.jsp>) Other species have not been tested.

**Application :** Western blotting (1 : 1,000), Other applications have not been tested.

**Storage :** Store at -20°C. Avoid freeze-thaw cycles.

**References :** 1) Okazaki, N. *et al.*: *DNA Res.*, 10(1), 35 (2003).

**For research use only, not for diagnostic use**

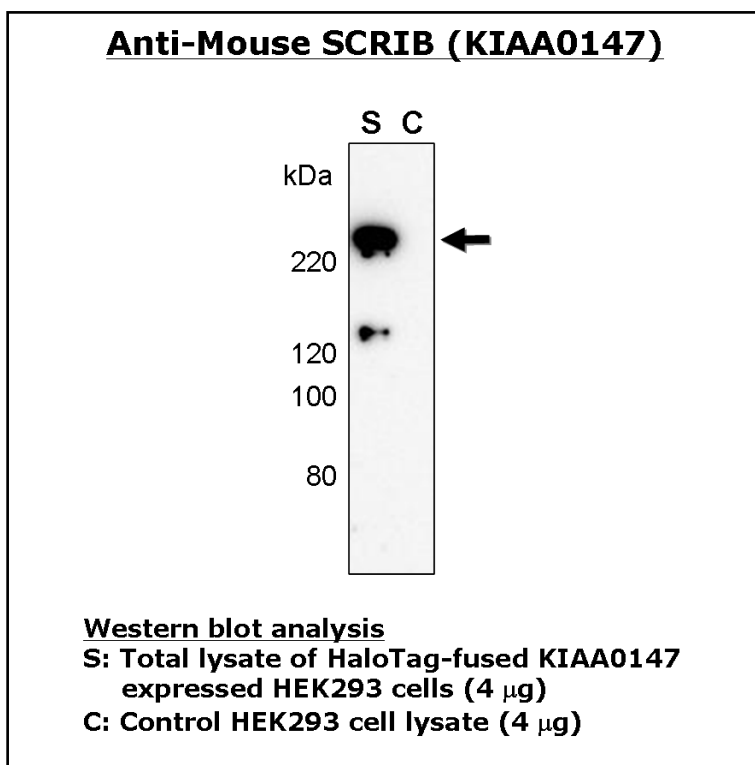


**Kazusa DNA Research Institute**  
2-6-7, Kazusa-kamatari,  
Kisarazu, Chiba 292-0818 JAPAN  
<http://www.kazusa.or.jp>



# ProteinExpress

ProteinExpress Co., Ltd.  
Chiba University Inohana Innovation Plaza  
1-8-15, Inohana, Chuo-ku,  
Chiba-shi, Chiba 260-0856, Japan  
Tel: +81-43-202-5755, Fax: +81-43-202-5756  
E-mail: [antibody@proteinexpress.co.jp](mailto:antibody@proteinexpress.co.jp)  
Web: [www.proteinexpress.co.jp](http://www.proteinexpress.co.jp)



**Kazusa DNA Research Institute**  
2-6-7, Kazusa-kamatari,  
Kisarazu, Chiba 292-0818 JAPAN  
<http://www.kazusa.or.jp>