

A11884

Leader in Biomolecular Solutions for Life Science



# NF- $\kappa$ B p65/RelA Rabbit mAb

Catalog No.: A11884 **Recombinant**

## Basic Information

### Observed MW

60kDa

### Calculated MW

60kDa

### Category

SMab Recombinant Monoclonal Antibody

### Applications

WB,IHC-P,IF/ICC,IP,ChIP,FC,ELISA

### Cross-Reactivity

Human,Mouse,Rat,Hamster,Monkey,Dog

## Background

NF- $\kappa$ B is a ubiquitous transcription factor involved in several biological processes. It is held in the cytoplasm in an inactive state by specific inhibitors. Upon degradation of the inhibitor, NF- $\kappa$ B moves to the nucleus and activates transcription of specific genes. NF- $\kappa$ B is composed of NFKB1 or NFKB2 bound to either REL, RELA, or RELB. The most abundant form of NF- $\kappa$ B is NFKB1 complexed with the product of this gene, RELA. Four transcript variants encoding different isoforms have been found for this gene.

## Recommended Dilutions

<b>WB</b>	1:500 - 1:2000
<b>IHC-P</b>	1:50 - 1:100
<b>IF/ICC</b>	1:50 - 1:100
<b>IP</b>	1:20 - 1:50
<b>FC</b>	1:20 - 1:50
<b>ELISA</b>	Recommended starting concentration is 1 $\mu$ g/mL. Please optimize the concentration based on your specific assay requirements.
<b>ChIP</b>	1:20 - 1:100

## Contact

 [www.abclonal.com](http://www.abclonal.com)

## Immunogen Information

<b>Gene ID</b>	<b>Swiss Prot</b>
5970	Q04206

### Immunogen

Recombinant protein of human NF- $\kappa$ B p65/RelA

### Synonyms

p65; CMCU; NFKB3; AIF3BL3; NF- $\kappa$ B p65/RelA

## Product Information

<b>Source</b>	<b>Isotype</b>	<b>Purification</b>
Rabbit	IgG	Affinity purification

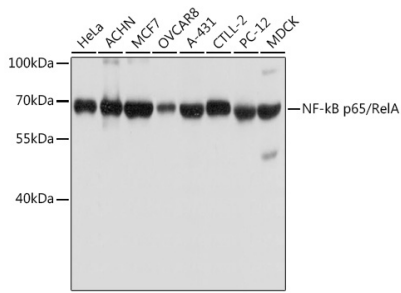
### Storage

Store at -20°C. Avoid freeze / thaw cycles.

Buffer: PBS with 0.02% sodium azide,50% glycerol,pH7.3.

## Validation Data

---



Western blot analysis of various lysates using NF-kB p65/RelA Rabbit mAb (A11884).  
Secondary antibody: HRP-conjugated Goat anti-Rabbit IgG (H+L) (AS014) at 1:10000 dilution.

Lysates/proteins: 25µg per lane.

Blocking buffer: 3% nonfat dry milk in TBST.