

A21230

Leader in Biomolecular Solutions for Life Science



CD30 Rabbit mAb

Catalog No.: A21230 **Recombinant**

Basic Information

Observed MW

Refer to figures

Calculated MW

14kDa/50kDa/63kDa

Category

SMab Recombinant Monoclonal Antibody

Applications

IHC-P,IF,ICC,FC,ELISA

Cross-Reactivity

Human

CloneNo number

ARC52949

Recommended Dilutions

| | |
|---------------|---|
| IHC-P | 1:100 - 1:500 |
| IF/ICC | 1:50 - 1:200 |
| FC | 1:100 - 1:500 |
| ELISA | Recommended starting concentration is 1 µg/mL. Please optimize the concentration based on your specific assay requirements. |

Contact

 www.abclonal.com

Background

The protein encoded by this gene is a member of the TNF-receptor superfamily. This receptor is expressed by activated, but not by resting, T and B cells. TRAF2 and TRAF5 can interact with this receptor, and mediate the signal transduction that leads to the activation of NF-kappaB. This receptor is a positive regulator of apoptosis, and also has been shown to limit the proliferative potential of autoreactive CD8 effector T cells and protect the body against autoimmunity. Two alternatively spliced transcript variants of this gene encoding distinct isoforms have been reported.

Immunogen Information

| | |
|----------------|-------------------|
| Gene ID | Swiss Prot |
| 943 | P28908 |

Immunogen

Recombinant fusion protein containing a sequence corresponding to amino acids 19-379 of human CD30 (NP_001234.3).

Synonyms

CD30; Ki-1; D1S166E

Product Information

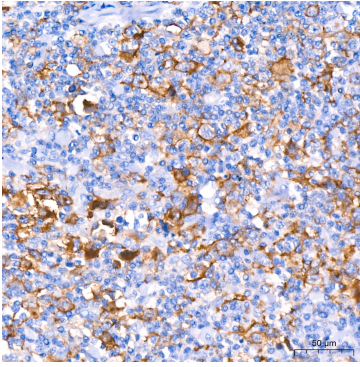
| | | |
|---------------|----------------|-----------------------|
| Source | Isotype | Purification |
| Rabbit | IgG | Affinity purification |

Storage

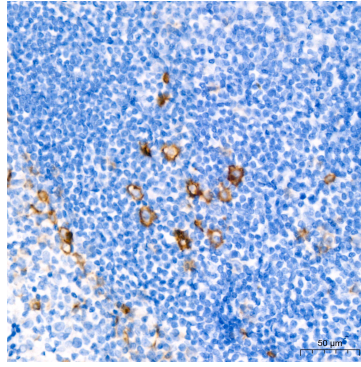
Store at -20°C. Avoid freeze / thaw cycles.

Buffer: PBS with 0.05% proclin300,0.05% BSA,50% glycerol,pH7.3.

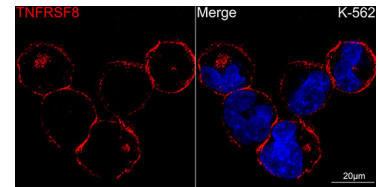
Validation Data



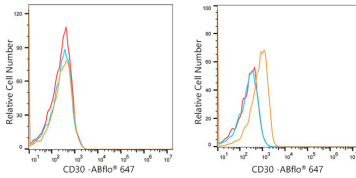
Immunohistochemistry analysis of paraffin-embedded Human anaplastic large cell lymphoma using CD30 Rabbit mAb (A21230) at dilution of 1:400 (40x lens). High pressure antigen retrieval performed with 0.01M Tris/EDTA Buffer (pH 9.0) prior to IHC staining.



Immunohistochemistry analysis of paraffin-embedded Human tonsil using CD30 Rabbit mAb (A21230) at dilution of 1:400 (40x lens). High pressure antigen retrieval performed with 0.01M Tris/EDTA Buffer (pH 9.0) prior to IHC staining.



Confocal imaging of K-562 cells using CD30 Rabbit mAb (A21230, dilution 1:100) (Red). DAPI was used for nuclear staining (blue). Objective: 60x.



Flow cytometry: 1×10^6 A549 cells (negative control, left) and K-562 cells (right) were surface-stained with CD30 Rabbit mAb (A21230, 2 $\mu\text{g}/\text{mL}$, orange line) or ABflo® 647 Rabbit IgG isotype control (A22070, 2 $\mu\text{g}/\text{mL}$, blue line), followed by Alexa Fluor®647 conjugated goat anti-rabbit pAb staining. Non-fluorescently stained cells were used as blank control (red line).