

**IRGM Antibody**  
Catalog # ASM10541

**Specification**

---

**IRGM Antibody - Product Information**

Application	<b>WB</b>
Primary Accession	<a href="#">A1A4Y4</a>
Other Accession	<a href="#">NP_001139277.1</a>
Host	<b>Rabbit</b>
Reactivity	<b>Human</b>
Clonality	<b>Polyclonal</b>

**Description**

Rabbit Anti-Human IRGM Polyclonal

**Target/Specificity**

Detects ~20 kDa.

**Other Names**

Immunity related GTPase family M Antibody Iipg3 Antibody Interferon inducible protein 1 Antibody, LRG-47-like protein Antibody, Immunity-related GTPase family M protein 1 Antibody, IFI1 Antibody, Irgm Antibody, IRGM\_HUMAN Antibody, LRG47 Antibody, Interferon-inducible protein 1 Antibody, IRGM1 Antibody, LRG 47 Antibody, IRGM Antibody, Iipg3 Antibody, Immunity-related GTPase family M protein Antibody, LRG-47 Antibody, MGC149263 Antibody, Immunity related GTPase family M protein 1 Antibody, LPS-stimulated RAW 264.7 macrophage protein 47 homolog Antibody

**Immunogen**

Synthetic peptide from the N-terminal of Human IRGM

**Purification**

Peptide Affinity Purified

Storage **-20°C**

**Storage Buffer**

PBS, 50% glycerol, 0.09% sodium azide

Shipping Temperature **Blue Ice or 4°C**

**Certificate of Analysis**

A 1:1000 dilution of SPC-681 was sufficient for detection of IRGM in 15 µg of human HeLa cell lysates by ECL immunoblot analysis using goat anti-rabbit IgG:HRP as the secondary antibody.

**Cellular Localization**

Golgi Apparatus Membrane | Cell Membrane | Cytoplasmic Vesicle | Phagosome Membrane | Cytoplasmic Vesicle | Autophagosome Membrane | Cell Projection | Phagocytic Cup

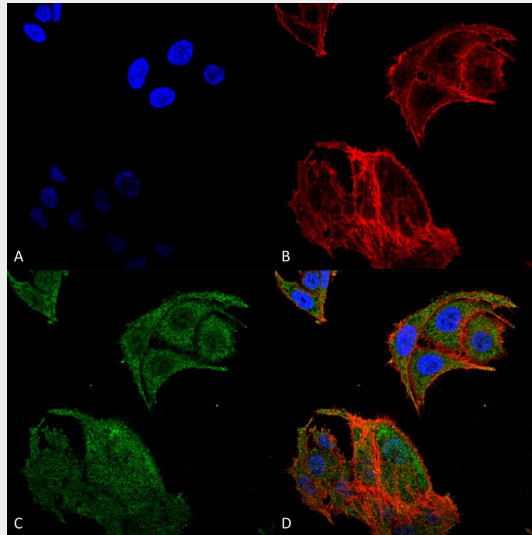
**IRGM Antibody - Protocols**

Provided below are standard protocols that you may find useful for product applications.

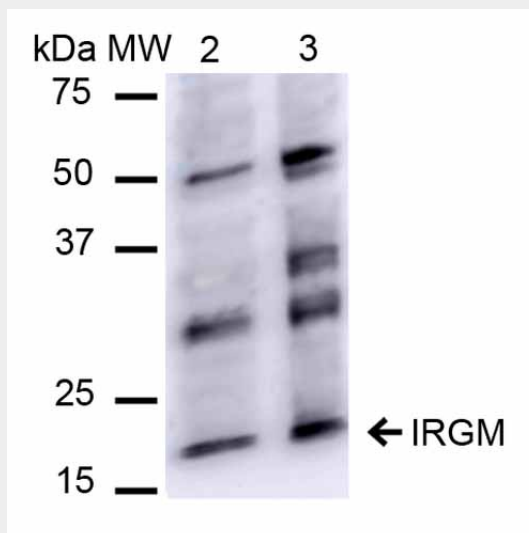
- [Western Blot](#)

- [Blocking Peptides](#)
- [Dot Blot](#)
- [Immunohistochemistry](#)
- [Immunofluorescence](#)
- [Immunoprecipitation](#)
- [Flow Cytometry](#)
- [Cell Culture](#)

**IRGM Antibody - Images**



Immunocytochemistry/Immunofluorescence analysis using Rabbit Anti-IRGM Polyclonal Antibody (ASM10541). Tissue: Colon carcinoma cell line (RKO). Species: Human. Fixation: 4% Formaldehyde for 15 min at RT. Primary Antibody: Rabbit Anti-IRGM Polyclonal Antibody (ASM10541) at 1:100 for 60 min at RT. Secondary Antibody: Goat Anti-Rabbit ATTO 488 at 1:100 for 60 min at RT. Counterstain: Phalloidin Texas Red F-Actin stain; DAPI (blue) nuclear stain at 1:1000, 1:5000 for 60 min at RT, 5 min at RT. Localization: Cell Membrane, Cytoplasmic Vesicle, Phagosome Membrane, Autophagosome Membrane. Magnification: 60X. (A) DAPI nuclear stain. (B) Phalloidin Texas Red F-Actin stain. (C) IRGM Antibody. (D) Composite.



Western blot analysis of Human HeLa and 293Trap cell lysates showing detection of ~20.1 kDa IRGM protein using Rabbit Anti-IRGM Polyclonal Antibody (ASM10541). Lane 1: Molecular Weight

Ladder (MW). Lane 2: HeLa cell lysates. Lane 3: 293Trap cell lysates. Load: 15  $\mu$ g. Block: 5% Skim Milk in 1X TBST. Primary Antibody: Rabbit Anti-IRGM Polyclonal Antibody (ASM10541) at 1:1000 for 2 hours at RT. Secondary Antibody: Goat Anti-Rabbit IgG: HRP at 1:1000 for 60 min at RT. Color Development: ECL solution for 6 min in RT. Predicted/Observed Size: ~20.1 kDa.