

Alpha-2C Adrenergic Receptor Antibody
Alpha-2C Adrenergic Antibody, Clone S330A-51
Catalog # ASM10267

Specification

Alpha-2C Adrenergic Receptor Antibody - Product Information

Application	WB
Primary Accession	P18825
Other Accession	NP_000674.2
Host	Mouse
Isotype	IgG2A
Reactivity	Human, Mouse
Clonality	Monoclonal

Description

Mouse Anti-Human Alpha-2C Adrenergic Receptor Monoclonal IgG2A

Target/Specificity

Detects ~50kDa or larger (possibly due to dimerization). Does not cross-react with other adrenergic receptors.

Other Names

Adra 2c Antibody, Alpha-2CAR Antibody, ADRA2C Antibody, ADRA2L2 Antibody, ADRARL2 Antibody, Alpha 2CAR Antibody, alpha2 AR C4 Antibody, alpha2 C4 Antibody, alpha2C Antibody, ALPHA2CAR Antibody, Alpha-2 adrenergic receptor subtype C4 Antibody, Alpha-2C adrenoceptor Antibody, Adrenergic alpha 2C receptor Antibody, Alpha 2C adrenergic receptor Antibody, Alpha 2C adrenergic receptor subtype C4 Antibody, Alpha 2C adrenoceptor Antibody, Alpha 2C adrenoceptor Antibody, Alpha 2C adrenoceptor Antibody, Alpha-2-adrenergic receptor Antibody, renal type Antibody, alpha2cii-adrenergic receptor Antibody, Subtype alpha2 C4 Antibody

Immunogen

Synthetic peptide amino acids 442-462 (QDFRRSFKHILFRRRRRGFRQ, cytoplasmic C-terminus) of human Alpha-2C adrenergic receptor

Purification

Protein G Purified

Storage **-20°C**

Storage Buffer

PBS pH7.4, 50% glycerol, 0.09% sodium azide

Shipping Temperature **Blue Ice or 4°C**

Certificate of Analysis

1 µg/ml of SMC-433 was sufficient for detection of Alpha-2C Adrenergic Receptor in 20 µg of COS cells transiently transfected with HA-tagged Alpha-2C membrane lysate and assayed by colorimetric immunoblot analysis using goat anti-mouse IgG:HRP as the secondary antibody.

Cellular Localization

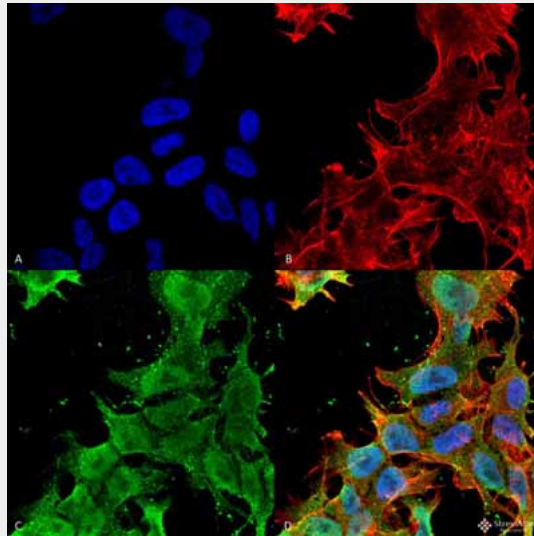
Cell Membrane

Alpha-2C Adrenergic Receptor Antibody - Protocols

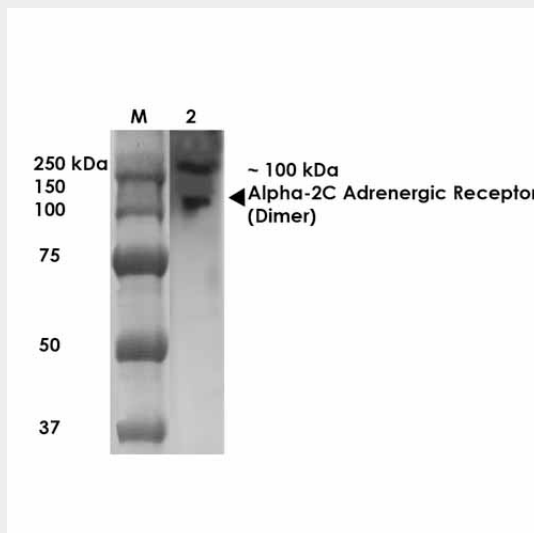
Provided below are standard protocols that you may find useful for product applications.

- [Western Blot](#)
- [Blocking Peptides](#)
- [Dot Blot](#)
- [Immunohistochemistry](#)
- [Immunofluorescence](#)
- [Immunoprecipitation](#)
- [Flow Cytometry](#)
- [Cell Culture](#)

Alpha-2C Adrenergic Receptor Antibody - Images



Immunocytochemistry/Immunofluorescence analysis using Mouse Anti-Alpha-2C Adrenergic Receptor Monoclonal Antibody, Clone S330A-51 (ASM10267). Tissue: Neuroblastoma cell line (SK-N-BE). Species: Human. Fixation: 4% Formaldehyde for 15 min at RT. Primary Antibody: Mouse Anti-Alpha-2C Adrenergic Receptor Monoclonal Antibody (ASM10267) at 1:100 for 60 min at RT. Secondary Antibody: Goat Anti-Mouse ATTO 488 at 1:100 for 60 min at RT. Counterstain: Phalloidin Texas Red F-Actin stain; DAPI (blue) nuclear stain at 1:1000, 1:5000 for 60min RT, 5min RT. Localization: Cell Membrane, Nucleus. Magnification: 60X. (A) DAPI (blue) nuclear stain (B) Phalloidin Texas Red F-Actin stain (C) Alpha-2C Adrenergic Receptor Antibody (D) Composite.



Western Blot analysis of Rat Brain Membrane showing detection of ~100 kDa Alpha 2C Adrenergic

Alpha-2C Adrenergic Receptor Antibody - Background

The alpha 2C Adrenergic Receptor controls the release of neurotransmitter from central adrenergic neurons and from sympathetic nerves in the heart. This receptor also plays a role in cognitive and behavioral function. Two variants are produced by alternative splicing. Alpha 2C Adrenergic Receptor has been reported extensively in the brain. Blood, corpus cavernosum, kidney, and heart tissues have also been reported to express the protein.

Alpha-2C Adrenergic Receptor Antibody - References

1. Filipeanu C.M., et al. (2011) *Biochim BiophysActa*. 1813: 346-357.
2. Powe D.G., et al. (2011) *Breast Cancer Res Treat*. 130: 457-463.