

**Clcn3 Antibody**  
**CICN3 Antibody, Clone S258-5**  
**Catalog # ASM10242****Specification**

---

**Clcn3 Antibody - Product Information**

Application	<b>WB, IHC, ICC</b>
Primary Accession	<a href="#">P51792</a>
Other Accession	<a href="#">NP_445815.2</a>
Host	<b>Mouse</b>
Isotype	<b>IgG1</b>
Reactivity	<b>Human, Mouse, Rat</b>
Clonality	<b>Monoclonal</b>
Format	<b>APC</b>

**Description**

Mouse Anti-Rat Clcn3 Monoclonal IgG1

**Target/Specificity**

Detects ~90kDa. Does not cross-react with Clcn4 or Clcn5 (based on KO validation results).

**Other Names**

CIC3 Antibody, CLC3 Antibody, CLCN 3 Antibody, Chloride channel 3 Antibody, Chloride channel protein 3 Antibody, Chloride channel Antibody, voltage-sensitive 3 Antibody, Chloride transporter CIC 3 Antibody, DKFZp564I0463 Antibody, H(+)/Cl(-) exchange transporter 3 Antibody, Chloride transporter CIC-3 Antibody, CIC-3 Antibody, H(+)/Cl(-) exchange transporter 3 Antibody

**Immunogen**

Synthetic peptide amino acids 98-115 (cytoplasmic N-terminus) of rat Clcn3

**Purification**

Protein G Purified

Storage **-20°C****Storage Buffer**

PBS pH7.4, 50% glycerol, 0.09% sodium azide

Shipping Temperature **Blue Ice or 4°C****Certificate of Analysis**

1 µg/ml of SMC-408 was sufficient for detection of Clcn3 in 20 µg of rat brain membrane lysate and assayed by colorimetric immunoblot analysis using goat anti-mouse IgG:HRP as the secondary antibody.

**Cellular Localization**

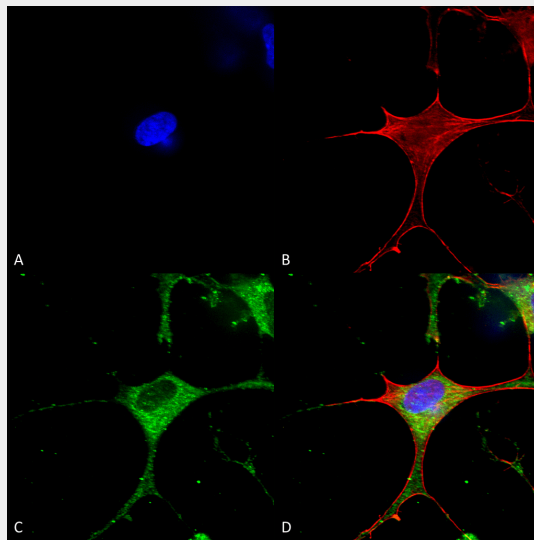
Membrane | Endosome | Endosome membrane | Cytoplasmic Vesicle | Secretory Vesicle Membrane

**Clcn3 Antibody - Protocols**

Provided below are standard protocols that you may find useful for product applications.

- [Western Blot](#)
- [Blocking Peptides](#)
- [Dot Blot](#)
- [Immunohistochemistry](#)
- [Immunofluorescence](#)
- [Immunoprecipitation](#)
- [Flow Cytometry](#)
- [Cell Culture](#)

### Clcn3 Antibody - Images



Immunocytochemistry/Immunofluorescence analysis using Mouse Anti-Clcn3 Monoclonal Antibody, Clone N258/5 (ASM10242). Tissue: Neuroblastoma cells (SH-SY5Y). Species: Human. Fixation: 4% PFA for 15 min. Primary Antibody: Mouse Anti-Clcn3 Monoclonal Antibody (ASM10242) at 1:50 for overnight at 4°C with slow rocking. Secondary Antibody: AlexaFluor 488 at 1:1000 for 1 hour at RT. Counterstain: Phalloidin-iFluor 647 (red) F-Actin stain; Hoechst (blue) nuclear stain at 1:800, 1.6mM for 20 min at RT. (A) Hoechst (blue) nuclear stain. (B) Phalloidin-iFluor 647 (red) F-Actin stain. (C) Clcn3 Antibody (D) Composite.

### Clcn3 Antibody - Background

Clcn3 mediates the exchange of chloride ions against protons, and functions as an antiporter and contributes to the acidification of the endosome and synaptic vesicle lumen, and may thereby affect vesicle trafficking and exocytosis. It may play an important role in neuronal cell function through regulation of membrane excitability by protein kinase C. It could also help neuronal cells to establish short-term memory.

### Clcn3 Antibody - References

1. [www.phosphosite.org/proteinAction.do?id=5088&showAllSites=true](http://www.phosphosite.org/proteinAction.do?id=5088&showAllSites=true)