

A19805

Leader in Biomolecular Solutions for Life Science



Tubulin beta-1 chain Rabbit mAb

Catalog No.: A19805 **Recombinant**

Basic Information

Observed MW

50kDa

Calculated MW

50kDa

Category

SMab Recombinant Monoclonal
Antibody

Applications

WB,IF/ICC,ELISA

Cross-Reactivity

Human,Mouse,Rat,Cow,Dog,Monkey

CloneNo number

ARC2484

Background

This gene encodes a member of the beta tubulin protein family. Beta tubulins are one of two core protein families (alpha and beta tubulins) that heterodimerize and assemble to form microtubules. This protein is specifically expressed in platelets and megakaryocytes and may be involved in proplatelet production and platelet release. A mutations in this gene is associated with autosomal dominant macrothrombocytopenia. Two pseudogenes of this gene are found on chromosome Y.

Recommended Dilutions

WB	1:500 - 1:2000
IF/ICC	1:50 - 1:200

Immunogen Information

Gene ID	Swiss Prot
81027	Q9H4B7

Immunogen

A synthetic peptide corresponding to a sequence within amino acids 352-451 of human Tubulin beta-1 chain (Q9H4B7).

Synonyms

MACTHC1; Tubulin beta-1 chain

Contact

 www.abclonal.com

Product Information

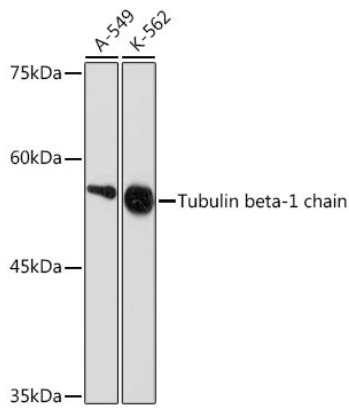
Source	Isotype	Purification
Rabbit	IgG	Affinity purification

Storage

Store at -20°C. Avoid freeze / thaw cycles.

Buffer: PBS with 0.02% sodium azide,0.05% BSA,50% glycerol,pH7.3.

Validation Data



Western blot analysis of extracts of various cell lines, using Tubulin beta-1 chain Rabbit mAb (A19805) at 1:1000 dilution.

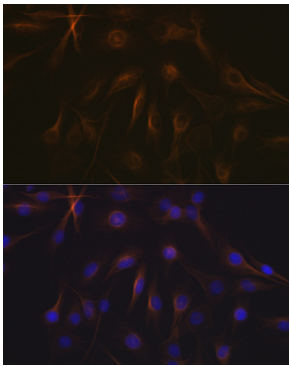
Secondary antibody: HRP Goat Anti-Rabbit IgG (H+L) (AS014) at 1:10000 dilution.

Lysates/proteins: 25µg per lane.

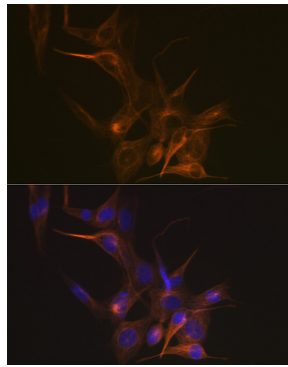
Blocking buffer: 3% nonfat dry milk in TBST.

Detection: ECL Basic Kit (RM00020).

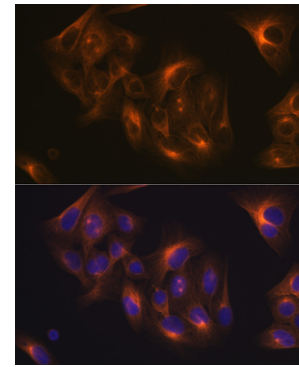
Exposure time: 90s.



Immunofluorescence analysis of C6 cells using Tubulin beta-1 chain Rabbit mAb (A19805) at dilution of 1:100 (40x lens). Blue: DAPI for nuclear staining.



Immunofluorescence analysis of NIH-3T3 cells using Tubulin beta-1 chain Rabbit mAb (A19805) at dilution of 1:100 (40x lens). Blue: DAPI for nuclear staining.



Immunofluorescence analysis of U-2 OS cells using Tubulin beta-1 chain Rabbit mAb (A19805) at dilution of 1:100 (40x lens). Blue: DAPI for nuclear staining.