

**GABA-A Receptor Beta3 Antibody**  
**GABA A Receptor Beta3 Antibody, Clone S87-25**  
**Catalog # ASM10215**

**Specification**

---

**GABA-A Receptor Beta3 Antibody - Product Information**

|                   |                             |
|-------------------|-----------------------------|
| Application       | <b>WB</b>                   |
| Primary Accession | <a href="#">P63080</a>      |
| Other Accession   | <a href="#">NP_032097.1</a> |
| Host              | <b>Mouse</b>                |
| Isotype           | <b>IgG1</b>                 |
| Reactivity        | <b>Human, Mouse, Rat</b>    |
| Clonality         | <b>Monoclonal</b>           |

**Description**

Mouse Anti-Mouse GABA-A Receptor Beta3 Monoclonal IgG1

**Target/Specificity**

Detects ~55kDa. No cross-reactivity against GABA-A-R-Beta 2 or -Beta1.

**Other Names**

ECA5 antibody, GABA alpha receptor beta-2 subunit antibody, GABA(A) receptor subunit beta-3 antibody, GABAA receptor beta 3 subunit antibody, GABAA receptor subunit beta 3 antibody, GABRB3 antibody, Gabrb3 antibody, Gamma aminobutyric acid (GABA) A receptor beta 3 antibody, Gamma aminobutyric acid receptor subunit beta 3 antibody, Gamma-aminobutyric acid receptor subunit beta-3 antibody, GBRB3\_HUMAN antibody, MGC9051 antibody

**Immunogen**

Fusion protein amino acids 370-433 of mouse GABA-A-R-Beta3

**Purification**

Protein G Purified

Storage **-20°C**

**Storage Buffer**

PBS pH7.4, 50% glycerol, 0.09% sodium azide

Shipping Temperature **Blue Ice or 4°C**

**Certificate of Analysis**

1 µg/ml of SMC-339 was sufficient for detection of Beta3 GABA receptor in 10 µg of rat brain lysate by colorimetric immunoblot analysis using goat anti-mouse IgG:HRP as the secondary antibody.

**Cellular Localization**

Cell Membrane | Cell Junction | Synapse | Postsynaptic Cell Membrane

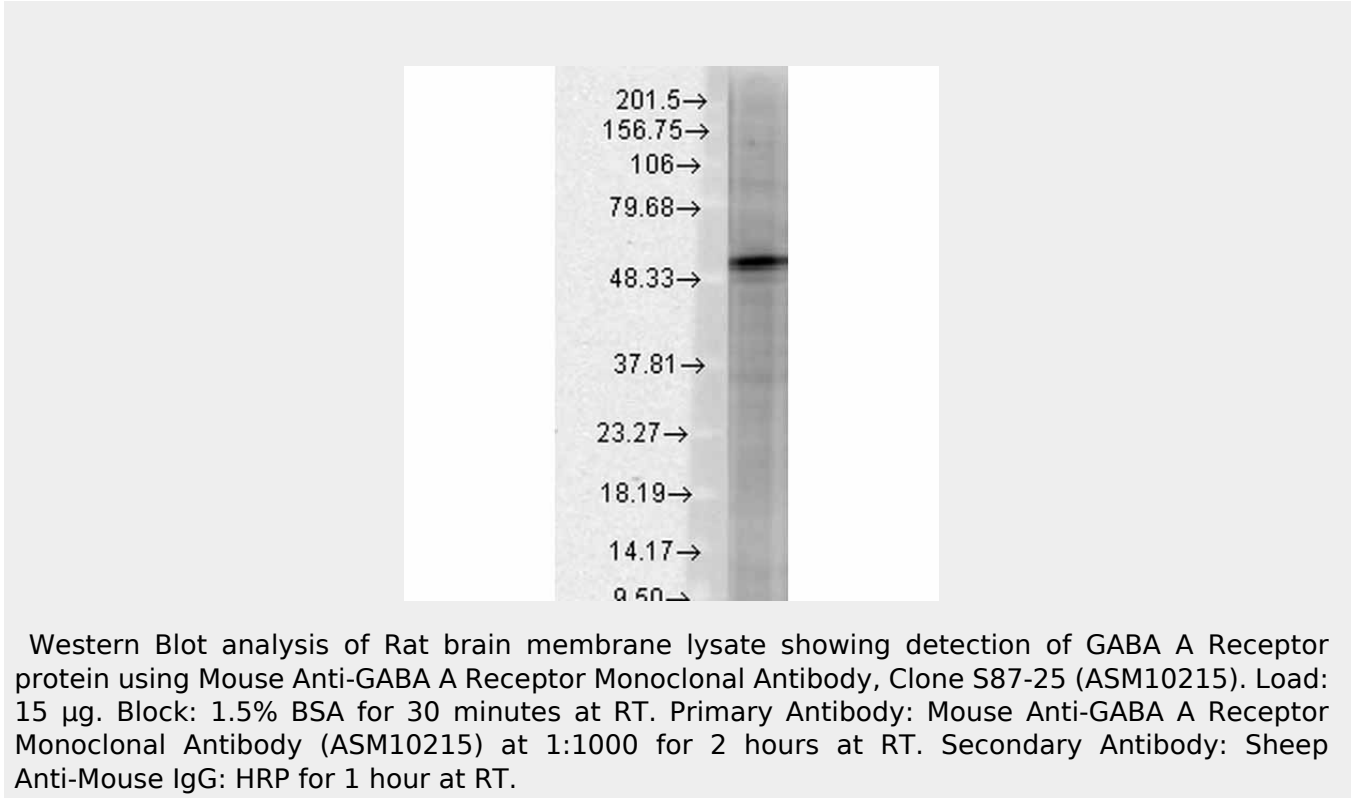
**GABA-A Receptor Beta3 Antibody - Protocols**

Provided below are standard protocols that you may find useful for product applications.

- [Western Blot](#)

- [Blocking Peptides](#)
- [Dot Blot](#)
- [Immunohistochemistry](#)
- [Immunofluorescence](#)
- [Immunoprecipitation](#)
- [Flow Cytometry](#)
- [Cell Culture](#)

### **GABA-A Receptor Beta3 Antibody - Images**



### **GABA-A Receptor Beta3 Antibody - Background**

The GABA-A receptor is a member of the superfamily of fast acting ligand-gated ion channels. The individual subunits of these receptors have similar sequences and structural features (1). GABA-A receptors are the major fast inhibitory neurotransmitter gated ion channels in the brain (2).

### **GABA-A Receptor Beta3 Antibody - References**

1. Bracamontes J.R. and Steinbach J.H. (2008) J Bio Chem. 283: 26128-26136.
2. Macdonald R.L., Olsen R.W. (1993) Annu Rev Neurosci. 17: 569-602.