

**VDCA-1 Antibody**  
Catalog # ASM10552**Specification****VDCA-1 Antibody - Product Information**

Application	<b>WB</b>
Primary Accession	<a href="#">P21796</a>
Other Accession	<a href="#">NP_003365.1</a>
Host	<b>Rabbit</b>
Reactivity	<b>Human</b>
Clonality	<b>Polyclonal</b>

**Description**

Rabbit Anti-Human VDCA-1 Polyclonal

**Target/Specificity**

Detects ~37 kDa.

**Other Names**

N2441 Antibody, POR1 Antibody, Vdac1 Antibody, VDAC1 Antibody, MGC111064 Antibody, Outer mitochondrial membrane protein porin 1 Antibody, OMP2 Antibody, YNL055C Antibody, VDAC1\_HUMAN Antibody, YNL2441C Antibody, VDAC-1 Antibody, Voltage dependent anion channel 1 Antibody, Voltage-dependent anion-selective channel protein 1 Antibody, Voltage dependent anion selective channel protein 1 Antibody, Plasmalemmal porin Antibody, Porin 31HL Antibody, Mitochondrial Porin Antibody, Porin 31HM Antibody, hVDAC1 Antibody, VDAC Antibody, VDAC1/porin Antibody, VDAC1 / Porin Antibody

**Immunogen**

Synthetic peptide from the N-terminal of Human VDCA-1

**Purification**

Peptide Affinity Purified

Storage **-20°C****Storage Buffer**

PBS, 50% glycerol, 0.09% sodium azide

Shipping Temperature **Blue Ice or 4°C****Certificate of Analysis**

A 1:1000 dilution of SPC-695 was sufficient for detection of VDCA-1 in 15 µg of human HeLa cell lysates by ECL immunoblot analysis using goat anti-rabbit IgG:HRP as the secondary antibody.

**Cellular Localization**

Mitochondrion Outer Membrane | Multi-Pass Membrane Protein | Cell Membrane | Multi-Pass Membrane Protein | Membrane Raft | Multi-Pass Membrane Protein

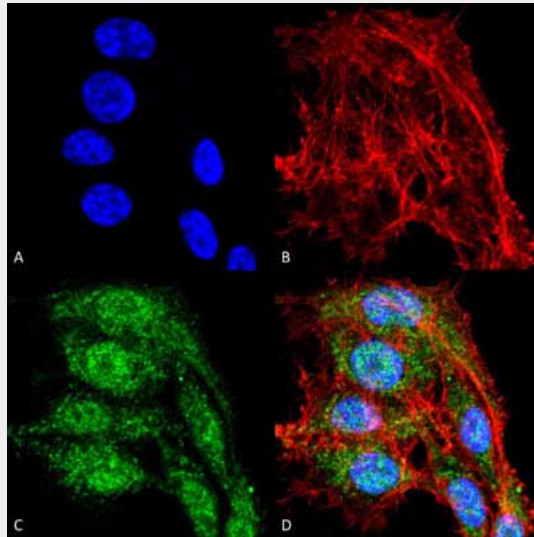
**VDCA-1 Antibody - Protocols**

Provided below are standard protocols that you may find useful for product applications.

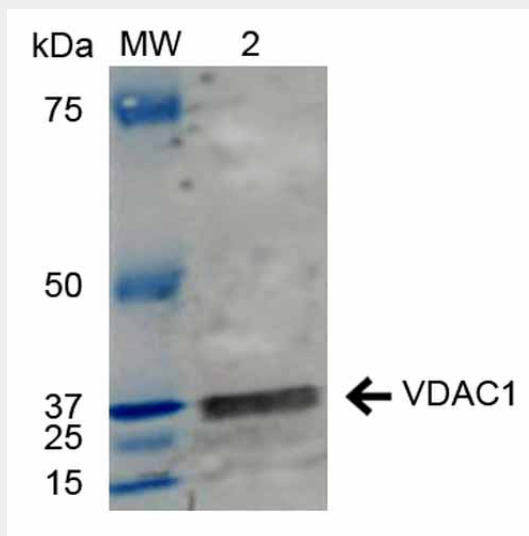
- [Western Blot](#)

- [Blocking Peptides](#)
- [Dot Blot](#)
- [Immunohistochemistry](#)
- [Immunofluorescence](#)
- [Immunoprecipitation](#)
- [Flow Cytometry](#)
- [Cell Culture](#)

**VDCA-1 Antibody - Images**



Immunocytochemistry/Immunofluorescence analysis using Rabbit Anti-VDCA-1 Polyclonal Antibody (ASM10552). Tissue: Colon carcinoma cell line (RKO). Species: Human. Fixation: 4% Formaldehyde for 15 min at RT. Primary Antibody: Rabbit Anti-VDCA-1 Polyclonal Antibody (ASM10552) at 1:100 for 60 min at RT. Secondary Antibody: Goat Anti-Rabbit ATTO 488 at 1:100 for 60 min at RT. Counterstain: Phalloidin Texas Red F-Actin stain; DAPI (blue) nuclear stain at 1:1000, 1:5000 for 60 min at RT, 5 min at RT. Localization: Cytoplasm, Mitochondrion Outer Membrane, Cell Membrane. Magnification: 60X. (A) DAPI nuclear stain. (B) Phalloidin Texas Red F-Actin stain. (C) VDCA-1 Antibody. (D) Composite.



Western blot analysis of Human HeLa and 293Trap cell lysates showing detection of ~30.7 kDa VDCA-1 protein using Rabbit Anti-VDCA-1 Polyclonal Antibody (ASM10552). Lane 1: Molecular

Weight Ladder (MW). Lane 2: HeLa cell lysates. Load: 15  $\mu$ g. Block: 5% Skim Milk in 1X TBST. Primary Antibody: Rabbit Anti-VDCA-1 Polyclonal Antibody (ASM10552) at 1:1000 for 2 hours at RT. Secondary Antibody: Goat Anti-Rabbit IgG: HRP at 1:2000 for 60 min at RT. Color Development: ECL solution for 6 min in RT. Predicted/Observed Size: ~30.7 kDa.