

IFT88 Antibody
Catalog # ASM10539**Specification****IFT88 Antibody - Product Information**

Application	WB
Primary Accession	O13099
Other Accession	NP_001305420.1
Host	Rabbit
Reactivity	Human, Mouse
Clonality	Polyclonal

Description

Rabbit Anti-Human IFT88 Polyclonal

Target/Specificity

Detects ~94 kDa.

Other Names

D13S1056E Antibody, TPR repeat protein 10 Antibody, Tetratricopeptide repeat domain 10 Antibody, Ift88 Antibody, Recessive polycystic kidney disease protein Tg737 homolog Antibody, IFT88_HUMAN Antibody, Polaris homolog Antibody, Probe hTg737 (polycystic kidney disease, autosomal recessive) Antibody, TG737 Antibody, TTC10 Antibody, DAF19 Antibody, IFT88 Antibody, hTg737 Antibody, Intraflagellar transport 88 homolog Antibody, MGC26259 Antibody, Tetratricopeptide repeat protein 10 Antibody, Intraflagellar transport protein 88 homolog Antibody, RP11-172H24.2 Antibody

Immunogen

Synthetic peptide from the mid to C-terminal of Human IFT88 (aa. 674-686)

Purification

Peptide Affinity Purified

Storage **-20°C****Storage Buffer**

PBS, 50% glycerol, 0.09% sodium azide

Shipping Temperature **Blue Ice or 4°C****Certificate of Analysis**

A 1:1000 dilution of SPC-679 was sufficient for detection of IFT88 in 15 µg of Human HeLa Cell Lysates by ECL immunoblot analysis using goat anti-rabbit IgG:HRP as the secondary antibody.

Cellular Localization

Cytoplasm | Cytoskeleton | Microtubule Organizing Center | Centrosome | Centriole | Cytoplasm | Cytoskeleton | Cilium Basal Body

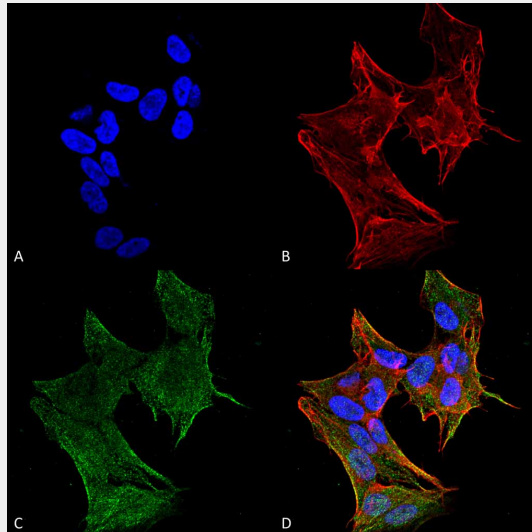
IFT88 Antibody - Protocols

Provided below are standard protocols that you may find useful for product applications.

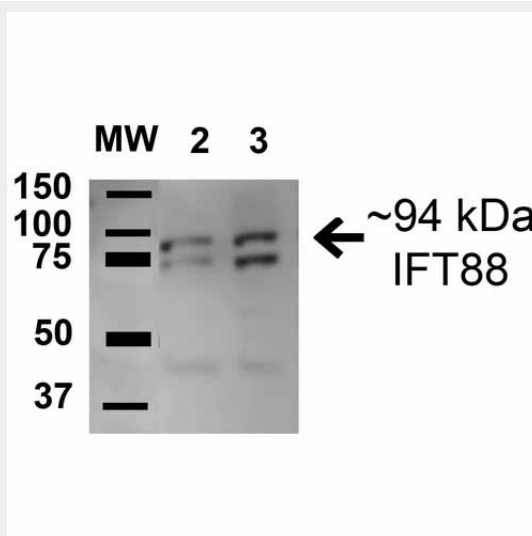
- [Western Blot](#)

- [Blocking Peptides](#)
- [Dot Blot](#)
- [Immunohistochemistry](#)
- [Immunofluorescence](#)
- [Immunoprecipitation](#)
- [Flow Cytometry](#)
- [Cell Culture](#)

IFT88 Antibody - Images



Immunocytochemistry/Immunofluorescence analysis using Rabbit Anti-IFT88 Polyclonal Antibody (ASM10539). Tissue: Neuroblastoma cell line (SK-N-BE). Species: Human. Fixation: 4% Formaldehyde for 15 min at RT. Primary Antibody: Rabbit Anti-IFT88 Polyclonal Antibody (ASM10539) at 1:100 for 60 min at RT. Secondary Antibody: Goat Anti-Rabbit ATTO 488 at 1:100 for 60 min at RT. Counterstain: Phalloidin Texas Red F-Actin stain; DAPI (blue) nuclear stain at 1:1000, 1:5000 for 60 min at RT, 5 min at RT. Localization: Cytoplasm, Cytoskeleton. Magnification: 60X. (A) DAPI nuclear stain. (B) Phalloidin Texas Red F-Actin stain. (C) IFT88 Antibody. (D) Composite.



Western blot analysis of Human A549 cell lysates showing detection of 94.3 kDa IFT88 protein using Rabbit Anti-IFT88 Polyclonal Antibody (ASM10539). Lane 1: Molecular Weight Ladder (MW).

Lane 2: Human A549 cell lysates. Load: 15 μ g . Block: 5% Skim Milk in 1X TBST. Primary Antibody: Rabbit Anti-IFT88 Polyclonal Antibody (ASM10539) at 1:1000 for 1 hour at RT. Secondary Antibody: Goat Anti-Rabbit HRP at 1:2000 for 60 min at RT. Color Development: ECL solution for 6 min in RT. Predicted/Observed Size: 94.3 kDa. Other Band(s): 45 kDa.