

A21233

Leader in Biomolecular Solutions for Life Science



Human IgG1 (Fc) Rabbit mAb

Catalog No.: A21233

Recombinant

1 Publications

Basic Information

Observed MW

50kDa

Calculated MW

44kDa

Category

SMab Recombinant Monoclonal Antibody

Applications

WB,IHC-P,IF/ICC,ELISA

Cross-Reactivity

Human

CloneNo number

ARC53385

Recommended Dilutions

WB 1:4000 - 1:16000

IHC-P 1:2000 - 1:20000

IF/ICC 1:100 - 1:400

ELISA Recommended starting concentration is 1 µg/mL. Please optimize the concentration based on your specific assay requirements.

Contact



www.abclonal.com

Background

Predicted to enable antigen binding activity and immunoglobulin receptor binding activity. Predicted to be involved in several processes, including activation of immune response; defense response to other organism; and phagocytosis. Predicted to act upstream of or within several processes, including immunoglobulin mediated immune response; positive regulation of hypersensitivity; and positive regulation of phagocytosis. Located in extracellular space.

Immunogen Information

Gene ID

3500

Swiss Prot

P01857,P01859,P01860,P01861

Immunogen

Recombinant fusion protein containing a sequence corresponding to amino acids 100-330 of human IgG1 (Fc) (P01857).

Synonyms

Product Information

Source

Rabbit

Isotype

IgG

Purification

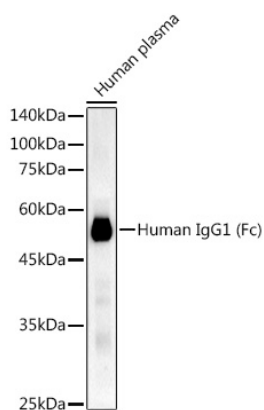
Affinity purification

Storage

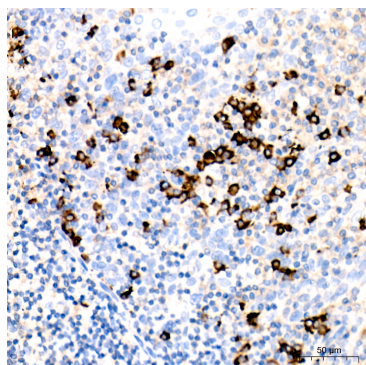
Store at -20°C. Avoid freeze / thaw cycles.

Buffer: PBS with 0.05% proclin300,0.05% BSA,50% glycerol,pH7.3.

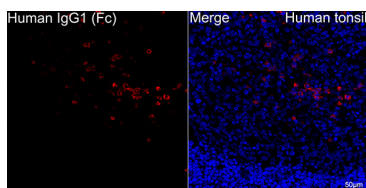
Validation Data



Western blot analysis of lysates from human plasma, using Human IgG1 (Fc) Rabbit mAb (A21233) at 1:4000 dilution.
Secondary antibody: HRP-conjugated Goat anti-Rabbit IgG (H+L) (AS014) at 1:10000 dilution.
Lysates/proteins: 25µg per lane.
Blocking buffer: 3% nonfat dry milk in TBST.
Detection: ECL Basic Kit (RM00020).
Exposure time: 30s.



Immunohistochemistry analysis of paraffin-embedded Human tonsil using Human IgG1 (Fc) Rabbit mAb (A21233) at dilution of 1:5000 (40x lens). High pressure antigen retrieval performed with 0.01M Citrate Buffer (pH 6.0) prior to IHC staining.



Confocal imaging of human tonsil using Human IgG1 (Fc) Rabbit mAb (A21233, at dilution of 1:100) (Red). DAPI was used for nuclear staining (blue). Objective: 40x. Perform high pressure antigen retrieval with 10 mM citrate buffer pH 6.0 before commencing with IF staining protocol.