

A13673

Leader in Biomolecular Solutions for Life Science



KLF4 Rabbit mAb

Catalog No.: A13673

Recombinant

13 Publications

Basic Information

Observed MW

55kDa

Calculated MW

55kDa

Category

SMab Recombinant Monoclonal Antibody

Applications

WB,IHC-P,IF/ICC,IP,ELISA

Cross-Reactivity

Human,Mouse,Rat

CloneNo number

ARC0721

Recommended Dilutions

WB	1:1000 - 1:2000
IHC-P	1:200 - 1:2000
IF/ICC	1:100 - 1:1000
IP	0.5µg-4µg antibody for 200µg-400µg extracts of whole cells
ELISA	Recommended starting concentration is 1 µg/mL. Please optimize the concentration based on your specific assay requirements.

Contact



www.abclonal.com

Background

This gene encodes a protein that belongs to the Kruppel family of transcription factors. The encoded zinc finger protein is required for normal development of the barrier function of skin. The encoded protein is thought to control the G1-to-S transition of the cell cycle following DNA damage by mediating the tumor suppressor gene p53. Mice lacking this gene have a normal appearance but lose weight rapidly, and die shortly after birth due to fluid evaporation resulting from compromised epidermal barrier function. Alternative splicing results in multiple transcript variants encoding different isoforms.

Immunogen Information

Gene ID	Swiss Prot
9314	O43474

Immunogen

A synthetic peptide corresponding to a sequence within amino acids 300-400 of human KLF4 (O43474).

Synonyms

EZF; GKLF; KLF4

Product Information

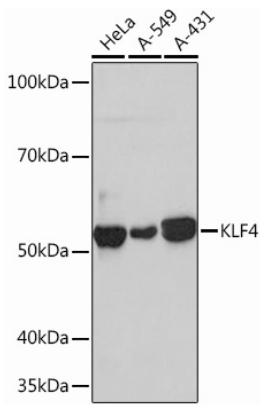
Source	Isotype	Purification
Rabbit	IgG	Affinity purification

Storage

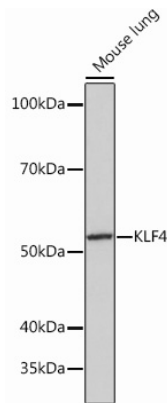
Store at -20°C. Avoid freeze / thaw cycles.

Buffer: PBS with 0.02% sodium azide,0.05% BSA,50% glycerol,pH7.3.

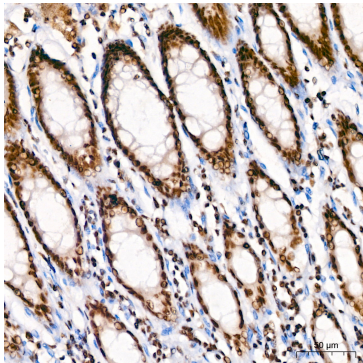
Validation Data



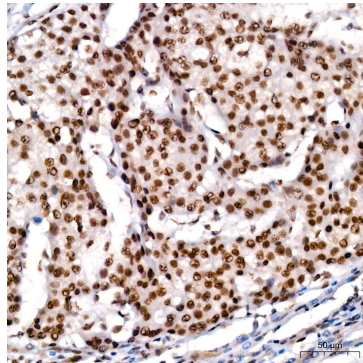
Western blot analysis of various lysates using KLF4 Rabbit mAb (A13673) at 1:1000 dilution.
Secondary antibody: HRP-conjugated Goat anti-Rabbit IgG (H+L) (AS014) at 1:10000 dilution.
Lysates/proteins: 25µg per lane.
Blocking buffer: 3% nonfat dry milk in TBST.
Detection: ECL Basic Kit (RM00020).
Exposure time: 30s.



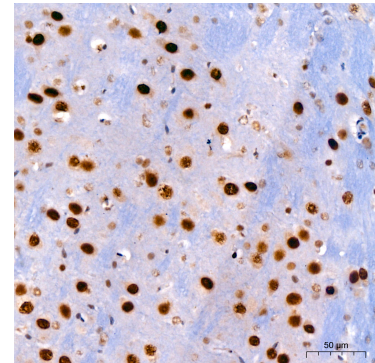
Western blot analysis of lysates from Mouse lung, using KLF4 Rabbit mAb (A13673) at 1:1000 dilution.
Secondary antibody: HRP-conjugated Goat anti-Rabbit IgG (H+L) (AS014) at 1:10000 dilution.
Lysates/proteins: 25µg per lane.
Blocking buffer: 3% nonfat dry milk in TBST.
Detection: ECL Basic Kit (RM00020).
Exposure time: 3min.



Immunohistochemistry analysis of paraffin-embedded Human colon using KLF4 Rabbit mAb (A13673) at dilution of 1:200 (40x lens). High pressure antigen retrieval performed with 0.01M Citrate Bufferr (pH 6.0) prior to IHC staining.

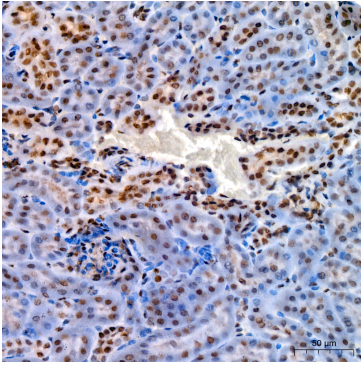


Immunohistochemistry analysis of paraffin-embedded Human liver cancer using KLF4 Rabbit mAb (A13673) at dilution of 1:200 (40x lens). High pressure antigen retrieval performed with 0.01M Citrate Bufferr (pH 6.0) prior to IHC staining.

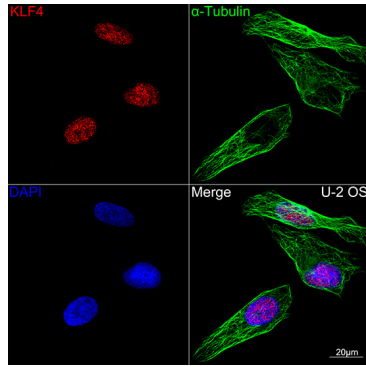


Immunohistochemistry analysis of paraffin-embedded Mouse brain using KLF4 Rabbit mAb (A13673) at dilution of 1:200 (40x lens). High pressure antigen retrieval performed with 0.01M Citrate Bufferr (pH 6.0) prior to IHC staining.

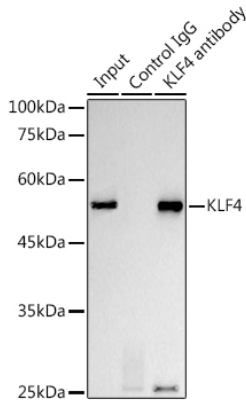
Validation Data



Immunohistochemistry analysis of paraffin-embedded Mouse kidney using KLF4 Rabbit mAb (A13673) at dilution of 1:200 (40x lens). High pressure antigen retrieval performed with 0.01M Citrate Bufferr (pH 6.0) prior to IHC staining.



Confocal imaging of U-2 OS cells using KLF4 Rabbit mAb (A13673,dilution 1:100)(Red). The cells were counterstained with α -Tubulin Mouse mAb (AC012,dilution 1:400) (Green). DAPI was used for nuclear staining (blue). Objective: 100x.



Immunoprecipitation analysis of 300 μ g extracts from HeLa cells using 3 μ g KLF4 Rabbit mAb (A13673). Western blot was performed from the immunoprecipitate using KLF4 Rabbit mAb (A13673) at a dilution of 1:1000.