

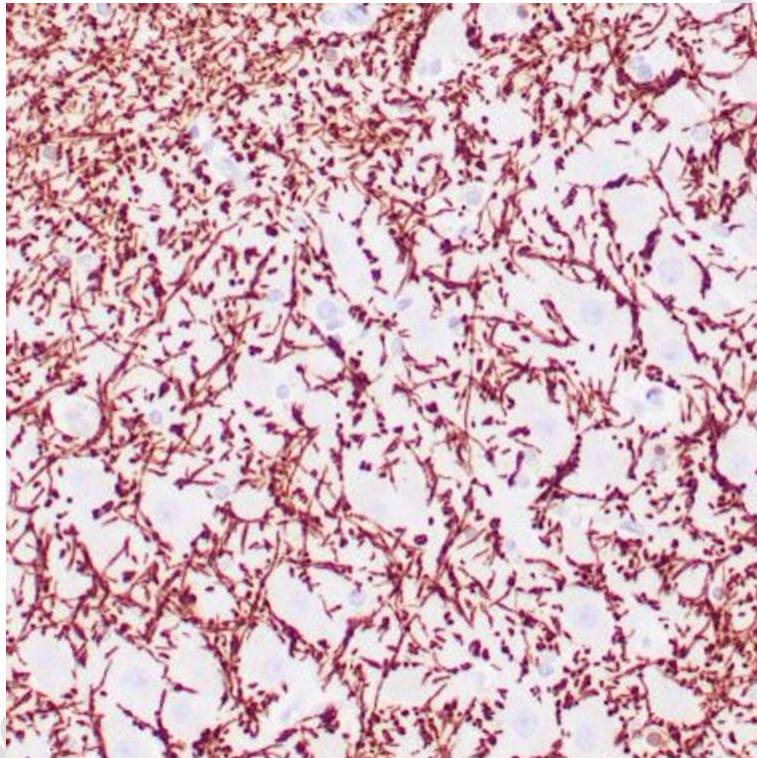
Anti-Myelin basic protein antibody (150-250aa) [ZR109]

Cat # NB-22-53201-01 size: 0.1ml

Cat # NB-2253201-05 size: 0.5ml

Cat # NB-22-53201-1 size: 1ml

Cat # NB-22-53201-7 size: 7ml (prediluted)



Human brain white matter stained with anti-MBP antibody using peroxidase-conjugate and DAB chromogen. Note the cytoplasmic staining of glial cells.

Description

Rabbit monoclonal antibody anti-Myelin basic protein (150-250aa) is suitable for use in Immunohistochemistry research applications.

Product Information

Host:	Rabbit
Applications:	Immunohistology - Paraffin
Reactivity:	Human
Clonality:	Monoclonal

Clone ID:	ZR109
Conjugation:	Unconjugated
Isotype:	IgG
Formulation:	Buffer with protein carrier and preservative
Purification:	Affinity purified
Concentration:	1 mg/mL
Storage Instruction:	Store at 2-8°C for up to 24 months. Predilute: Ready to use, no reconstitution necessary. Concentrate: Use dilution range and appropriate lab-standardized diluent. Stability after dilution: 7 days at 24°C, 3 months at 2-8°C, 6months at -20°C.

Target

Gene symbol:	PRG2
Gene ID:	5553
Uniprot ID:	PRG2_HUMAN
Immunogen Region:	150-250aa
Specificity:	Positive control: Brain
Immunogen:	Recombinant fragment (around aa 150-250) of human MBP

Additional information

Tissue Specificity: High levels of the proform in placenta and pregnancy serum.in placenta, localized to X cells of septa and anchoring villi. Lower levels in a variety of other tissues including kidney, myometrium, endometrium, ovaries, breast, prostate, bone marrow and colon.

Post Translational Modifications: Nitrated

Function: Cytotoxin and helminthotoxin. Also induces non-cytolytic histamine release from human basophils. Involved in antiparasitic defense mechanisms and immune hypersensitivity reactions. The proform acts as a proteinase inhibitor, reducing the activity of PAPPa.

Cellular Localisation: Bone Marrow Proteoglycan: Secreted
The Proform Is Secreted
Eosinophil Granule Major Basic Protein: Cytoplasmic Vesicle
Secretory Vesicle
The Mature Protein Is Found In The Matrix Of The Eosinophil's Large Specific Granule (Crystalloid Core)

Synonyms: Bone Marrow Proteoglycan
Bmpg
Proteoglycan 2 Cleaved Into - Eosinophil Granule Major Basic Protein
Embp
Mbp
Pregnancy-Associated Major Basic Protein

*For reference only
For Research Use Only. Not for Diagnostic or Therapeutic Use.*