

**RAB1B Antibody**  
Catalog # ASM10544**Specification**

---

**RAB1B Antibody - Product Information**

Application	<b>WB</b>
Primary Accession	<a href="#">O9H0U4</a>
Other Accession	<a href="#">NP_112243.1</a>
Host	<b>Rabbit</b>
Reactivity	<b>Human, Rat</b>
Clonality	<b>Polyclonal</b>

**Description**

Rabbit Anti-Human RAB1B Polyclonal

**Target/Specificity**

Detects ~48 kDa.

**Other Names**

Ras-related protein Rab-1B Antibody, RAB1B Antibody

**Immunogen**

Synthetic peptide from the C-terminal of Human RAB1B (aa. 179-189)

**Purification**

Peptide Affinity Purified

Storage **-20°C****Storage Buffer**

PBS, 50% glycerol, 0.09% sodium azide

Shipping Temperature **Blue Ice or 4°C****Certificate of Analysis**

A 1:1000 dilution of SPC-684 was sufficient for detection of RAB1B in 15 µg of Human HeLa Cell Lysates by ECL immunoblot analysis using goat anti-rabbit IgG:HRP as the secondary antibody.

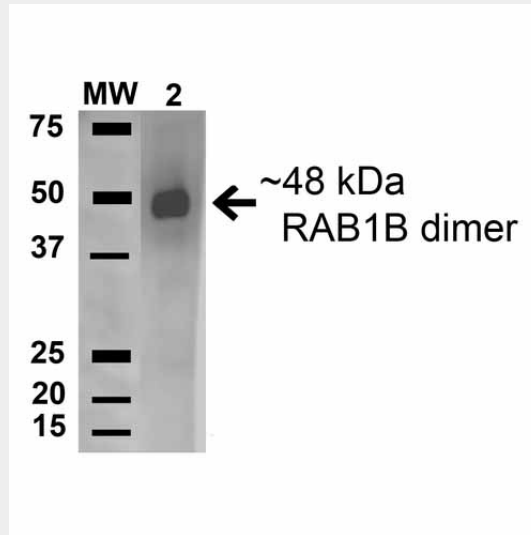
**Cellular Localization**Cytoplasm | Membrane | Lipid-Anchor | Cytoplasmic Side | Preautophagosomal Structure  
Membrane | Lipid-Anchor | Cytoplasmic Side**RAB1B Antibody - Protocols**

Provided below are standard protocols that you may find useful for product applications.

- [Western Blot](#)
- [Blocking Peptides](#)
- [Dot Blot](#)
- [Immunohistochemistry](#)
- [Immunofluorescence](#)
- [Immunoprecipitation](#)

- [Flow Cytometry](#)
- [Cell Culture](#)

### RAB1B Antibody - Images



Western blot analysis of Human HeLa and 293Trap cell lysates showing detection of 22.1 kDa RAB1B protein using Rabbit Anti-RAB1B Polyclonal Antibody (ASM10544). Lane 1: Molecular Weight Ladder (MW). Lane 2: Human HeLa and 293Trap cell lysates. Load: 15  $\mu$ g. Block: 5% Skim Milk in 1X TBST. Primary Antibody: Rabbit Anti-RAB1B Polyclonal Antibody (ASM10544) at 1:1000 for 1 hour at RT. Secondary Antibody: Goat Anti-Rabbit HRP at 1:2000 for 60 min at RT. Color Development: ECL solution for 6 min in RT. Predicted/Observed Size: 22.1 kDa.