

A18298

Leader in Biomolecular Solutions for Life Science



# citrulline-Histone H3-R2/R8/R17 Rabbit pAb

Catalog No.: A18298

3 Publications

## Basic Information

### Observed MW

17kDa

### Calculated MW

15kDa

### Category

Polyclonal Antibody

### Applications

WB,ELISA,DB

### Cross-Reactivity

Human,Mouse,Rat,Other (Wide Range Predicted)

## Background

Histones are basic nuclear proteins that are responsible for the nucleosome structure of the chromosomal fiber in eukaryotes. This structure consists of approximately 146 bp of DNA wrapped around a nucleosome, an octamer composed of pairs of each of the four core histones (H2A, H2B, H3, and H4). The chromatin fiber is further compacted through the interaction of a linker histone, H1, with the DNA between the nucleosomes to form higher order chromatin structures. This gene is intronless and encodes a replication-dependent histone that is a member of the histone H3 family. Transcripts from this gene lack polyA tails; instead, they contain a palindromic termination element. This gene is found in the large histone gene cluster on chromosome 6p22-p21.3.

## Recommended Dilutions

**WB** 1:500 - 1:1000

**DB** 1:500 - 1:1000

**ELISA** Recommended starting concentration is 1 µg/mL. Please optimize the concentration based on your specific assay requirements.

## Immunogen Information

### Gene ID

8290/8350

### Swiss Prot

Q16695/P68431

### Immunogen

A synthetic citrullinated peptide around R2 & R8 & R17 of human Histone H3 (NP\_003520.1).

### Synonyms

H3/A; H3C2; H3C3; H3C4; H3C6; H3C7; H3C8; H3FA; H3C10; H3C11; H3C12; HIST1H3A; citrulline-Histone H3-R2/R8/R17

## Contact

 [www.abclonal.com](http://www.abclonal.com)

## Product Information

### Source

Rabbit

### Isotype

IgG

### Purification

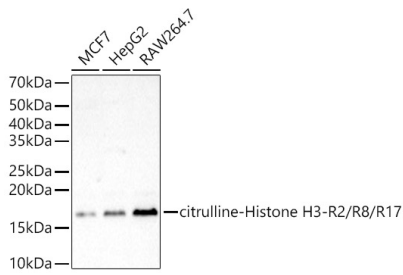
Affinity purification

### Storage

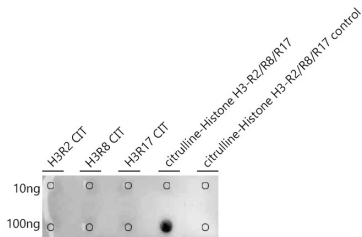
Store at -20°C. Avoid freeze / thaw cycles.

Buffer: PBS with 0.05% proclin300,50% glycerol,pH7.3.

## Validation Data



Western blot analysis of various lysates, using citrulline-Histone H3-R2/R8/R17 Rabbit pAb (A18298) at 1:900 dilution.  
Secondary antibody: HRP-conjugated Goat anti-Rabbit IgG (H+L) (AS014) at 1:10000 dilution.  
Lysates/proteins: 25µg per lane.  
Blocking buffer: 3% nonfat dry milk in TBST.  
Detection: ECL Basic Kit (RM00020).  
Exposure time: 180s.



Dot-blot analysis of all sorts of peptides using citrulline-Histone H3-R2/R8/R17 Rabbit pAb antibody (A18298) at 1:680 dilution.