

Ataxin 1 Antibody
Ataxin 1 Antibody, Clone S65-37
Catalog # ASM10307**Specification**

Ataxin 1 Antibody - Product Information

Application	WB, ICC
Primary Accession	P54254
Other Accession	NP_001186233.1
Host	Mouse
Isotype	IgG1
Reactivity	Human, Mouse, Rat
Clonality	Monoclonal

Description

Mouse Anti-Mouse Ataxin 1 Monoclonal IgG1

Target/Specificity

Detects ~85kDa. No cross-reactivity against phosphor S751-Ataxin-1. Minimal cross-reactivity against S751A mutant of Ataxin-1 by ELISA and immunofluorescence and negative by immunoblot.

Other Names

Ataxin-1 Antibody, ATX1 Antibody, Atxn1 Antibody, D6S504E Antibody, OTTHUMP00000016065 Antibody, SCA1 Antibody, Spinocerebellar ataxia type 1 protein Antibody, Spinocerebellar ataxia type 1 protein homolog Antibody

Immunogen

Synthetic peptide amino acids 746-761 (RKRRWSAPETRKLEKS) of mouse ataxin-1. Rat: 93% identity (15/16 amino acids identical). Human: 87% identity (14/16 amino acids identical).

Purification

Protein G Purified

Storage **-20°C****Storage Buffer**

PBS pH 7.4, 50% glycerol, 0.1% sodium azide

Shipping Temperature **Blue Ice or 4°C****Certificate of Analysis**

1 µg/ml of SMC-475 was sufficient for detection of Ataxin 1 in 20 µg of COS cells transiently transfected with Ataxin-1 lysate by colorimetric immunoblot analysis using Goat anti-mouse IgG:HRP as the secondary antibody.

Cellular Localization

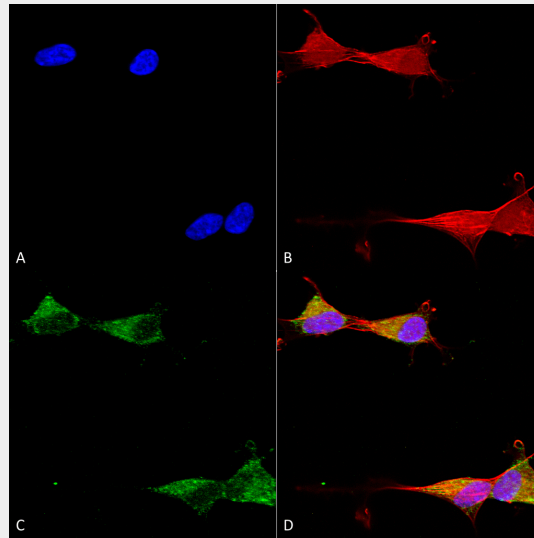
Cytoplasm | Nucleus

Ataxin 1 Antibody - Protocols

Provided below are standard protocols that you may find useful for product applications.

- [Western Blot](#)
- [Blocking Peptides](#)
- [Dot Blot](#)
- [Immunohistochemistry](#)
- [Immunofluorescence](#)
- [Immunoprecipitation](#)
- [Flow Cytometry](#)
- [Cell Culture](#)

Ataxin 1 Antibody - Images



Immunocytochemistry/Immunofluorescence analysis using Mouse Anti-Ataxin 1 Monoclonal Antibody, Clone N65/37 (ASM10307). Tissue: Neuroblastoma cells (SH-SY5Y). Species: Human. Fixation: 4% PFA for 15 min. Primary Antibody: Mouse Anti-Ataxin 1 Monoclonal Antibody (ASM10307) at 1:50 for overnight at 4°C with slow rocking. Secondary Antibody: AlexaFluor 488 at 1:1000 for 1 hour at RT. Counterstain: Phalloidin-iFluor 647 (red) F-Actin stain; Hoechst (blue) nuclear stain at 1:800, 1.6mM for 20 min at RT. (A) Hoechst (blue) nuclear stain. (B) Phalloidin-iFluor 647 (red) F-Actin stain. (C) Ataxin 1 Antibody (D) Composite.

Ataxin 1 Antibody - Background

Ataxin-1 is a member of the ATXN1 protein family and contains a single AXH domain. It is a neurodegenerative disorder protein thought to have a role in the metabolism of RNA as it has been shown to localize to the RNA and transcription dependent inclusions within the nucleus. A mutation of Ataxin-1 is the cause of spinocerebellar ataxia type-1 (SCA1), a progressive, neurodegenerative disease that is autosomal dominant and primarily affects the Purkinje cells found in brain stem neuronal populations and the cerebellum. Expression of Ataxin-1 is almost ubiquitous, except in the brain where it is isolated to populations of neurons.