

A11250

Leader in Biomolecular Solutions for Life Science



www.abclonal.com

[KO Validated] SQSTM1/p62 Rabbit pAb

Catalog No.: A11250

KO Validated

10 Publications

Basic Information

Observed MW

62kDa/

Calculated MW

48kDa

Category

Polyclonal Antibody

Applications

WB,IHC-P,IF/ICC,IP,ELISA

Cross-Reactivity

Human,Rat

Background

This gene encodes a multifunctional protein that binds ubiquitin and regulates activation of the nuclear factor kappa-B (NF- κ B) signaling pathway. The protein functions as a scaffolding/adaptor protein in concert with TNF receptor-associated factor 6 to mediate activation of NF- κ B in response to upstream signals. Alternatively spliced transcript variants encoding either the same or different isoforms have been identified for this gene. Mutations in this gene result in sporadic and familial Paget disease of bone.

Recommended Dilutions

WB 1:500 - 1:2000

IHC-P 1:20 - 1:50

IF/ICC 1:20 - 1:50

IP 0.5 μ g-4 μ g antibody for
200 μ g-400 μ g extracts
of whole cells

ELISA Recommended starting
concentration is 1
 μ g/mL. Please optimize
the concentration
based on your specific
assay requirements.

Immunogen Information

Gene ID

8878

Swiss Prot

Q13501

Immunogen

Recombinant fusion protein containing a sequence corresponding to amino acids 1-440 of human SQSTM1/p62 (NP_003891.1).

Synonyms

p60; p62; A170; DMRV; OSIL; PDB3; ZIP3; p62B; NADGP; FTDALS3; 62

Product Information

Source

Rabbit

Isotype

IgG

Purification

Affinity purification

Storage

Store at -20°C. Avoid freeze / thaw cycles.

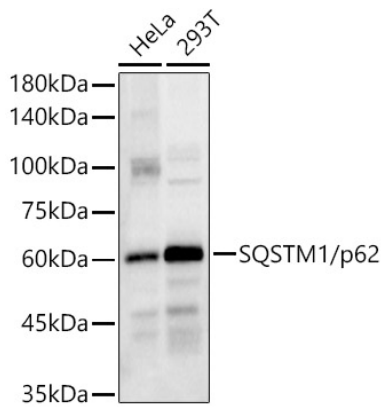
Buffer: PBS with 0.05% proclin300,50% glycerol,pH7.3.

Contact

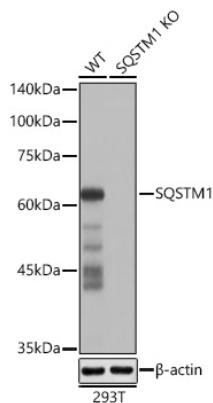


www.abclonal.com

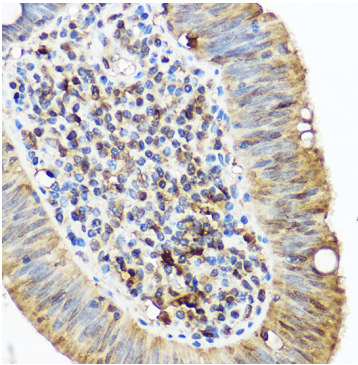
Validation Data



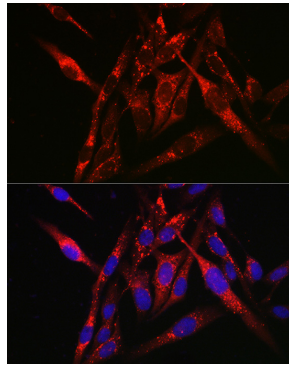
Western blot analysis of various lysates using [KO Validated] SQSTM1/p62 Rabbit pAb (A11250) at 1:1000 dilution.
Secondary antibody: HRP-conjugated Goat anti-Rabbit IgG (H+L) (AS014) at 1:10000 dilution.
Lysates/proteins: 25µg per lane.
Blocking buffer: 3% nonfat dry milk in TBST.
Detection: ECL Basic Kit (RM00020).
Exposure time: 10s.



Western blot analysis of lysates from wild type (WT) and SQSTM1 knockout (KO) 293T cells using [KO Validated] SQSTM1/p62 Rabbit pAb (A11250) at 1:1000 dilution incubated overnight at 4°C.
Secondary antibody: HRP-conjugated Goat anti-Rabbit IgG (H+L) (AS014) at 1:10000 dilution.
Lysates/proteins: 25 µg per lane.
Blocking buffer: 3% nonfat dry milk in TBST.
Detection: ECL Basic Kit (RM00020).
Exposure time: 10s.

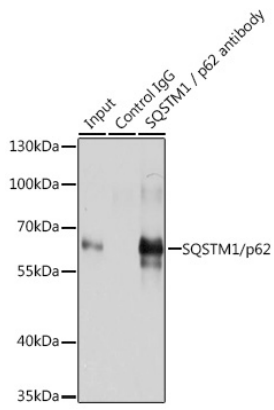


Immunohistochemistry analysis of paraffin-embedded Human colon carcinoma using [KO Validated] SQSTM1/p62 Rabbit pAb (A11250) at dilution of 1:50 (40x lens). High pressure antigen retrieval performed with 0.01M Citrate Buffer (pH 6.0) prior to IHC staining.



Immunofluorescence analysis of U2OS cells using [KO Validated] SQSTM1/p62 Rabbit pAb (A11250) at dilution of 1:50 (40x lens). Secondary antibody: Cy3-conjugated Goat anti-Rabbit IgG (H+L) (AS007) at 1:500 dilution. Blue: DAPI for nuclear staining.

Validation Data



Immunoprecipitation analysis of 200 μ g extracts of C6 cells using 3 μ g SQSTM1/p62 antibody (A11250). Western blot was performed from the immunoprecipitate using SQSTM1/p62 antibody (A11250) at a dilution of 1:1000.