

**BRSK1 Antibody**  
Catalog # ASM10546

**Specification**

---

**BRSK1 Antibody - Product Information**

Application	<b>WB</b>
Primary Accession	<a href="#">Q8TDC3</a>
Other Accession	<a href="#">NP_115806.1</a>
Host	<b>Rabbit</b>
Reactivity	<b>Human</b>
Clonality	<b>Polyclonal</b>

**Description**

Rabbit Anti-Human BRSK1 Polyclonal

**Target/Specificity**

Detects ~70 kDa.

**Other Names**

Brain-selective kinase 1 Antibody, Brain-specific serine/threonine-protein kinase 1 Antibody, hSAD1 Antibody, BR serine/threonine-protein kinase 1 Antibody, SAD1 Antibody, BRSK1 Antibody, Synapses of Amphids Defective homolog 1 Antibody, KIAA1811 Antibody, SAD1 homolog Antibody, Serine/threonine-protein kinase BRSK1 Antibody, SADB Antibody, Serine/threonine-protein kinase SAD-B Antibody

**Immunogen**

Synthetic peptide from the mid-protein of Human BRSK1

**Purification**

Peptide Affinity Purified

Storage **-20°C**

**Storage Buffer**

PBS, 50% glycerol, 0.09% sodium azide

Shipping Temperature **Blue Ice or 4°C**

**Certificate of Analysis**

A 1:1000 dilution of SPC-686 was sufficient for detection of BRSK1 in 15 µg of mouse brain cell lysates by ECL immunoblot analysis using goat anti-rabbit IgG:HRP as the secondary antibody.

**Cellular Localization**

Cytoplasm | Nucleus | Cytoplasm | Cytoskeleton | Microtubule Organizing Center | Centrosome | Cell Junction | Synapse

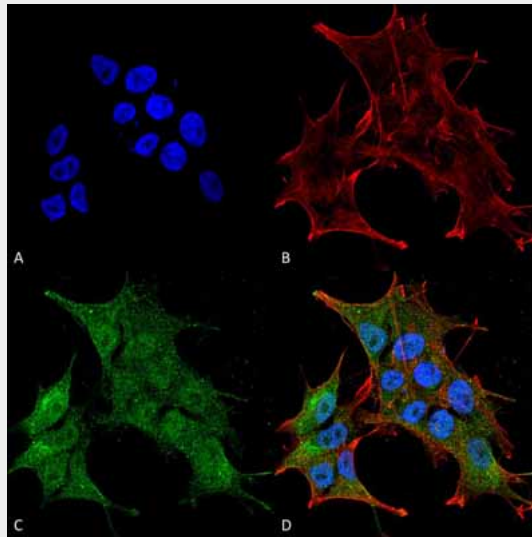
**BRSK1 Antibody - Protocols**

Provided below are standard protocols that you may find useful for product applications.

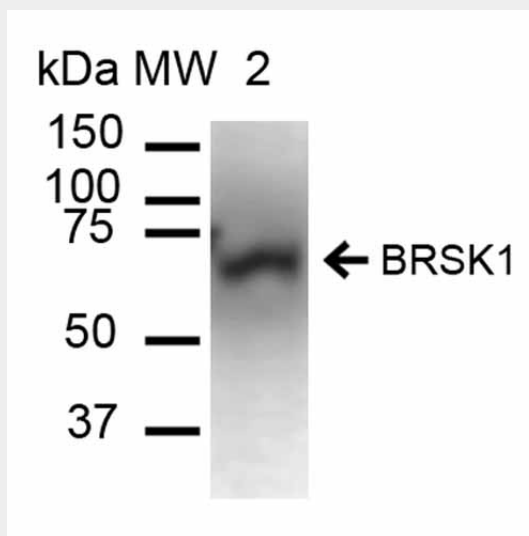
- [Western Blot](#)
- [Blocking Peptides](#)

- [Dot Blot](#)
- [Immunohistochemistry](#)
- [Immunofluorescence](#)
- [Immunoprecipitation](#)
- [Flow Cytometry](#)
- [Cell Culture](#)

**BRSK1 Antibody - Images**



Immunocytochemistry/Immunofluorescence analysis using Rabbit Anti-BRSK1 Polyclonal Antibody (ASM10546). Tissue: Neuroblastoma cell line (SK-N-BE). Species: Human. Fixation: 4% Formaldehyde for 15 min at RT. Primary Antibody: Rabbit Anti-BRSK1 Polyclonal Antibody (ASM10546) at 1:100 for 60 min at RT. Secondary Antibody: Goat Anti-Mouse ATTO 488 at 1:200 for 60 min at RT. Counterstain: Phalloidin Texas Red F-Actin stain; DAPI (blue) nuclear stain at 1:1000, 1:5000 for 60 min at RT, 5 min at RT. Localization: Cytoplasm, Nucleus. Magnification: 60X. (A) DAPI (blue) nuclear stain (B) Phalloidin Texas Red F-Actin stain (C) BRSK1 Antibody (D) Composite.



Western blot analysis of Mouse Brain cell lysates showing detection of ~85.1 kDa BRSK1 protein using Rabbit Anti-BRSK1 Polyclonal Antibody (ASM10546). Lane 1: Molecular Weight Ladder (MW). Lane 2: Mouse Brain cell lysates. Load: 15 µg. Block: 5% Skim Milk in 1X TBST. Primary Antibody:

Rabbit Anti-BRSK1 Polyclonal Antibody (ASM10546) at 1:1000 for 60 min at RT. Secondary Antibody: Goat Anti-Rabbit IgG: HRP at 1:2000 for 60 min at RT. Color Development: ECL solution for 6 min in RT. Predicted/Observed Size: ~85.1 kDa.