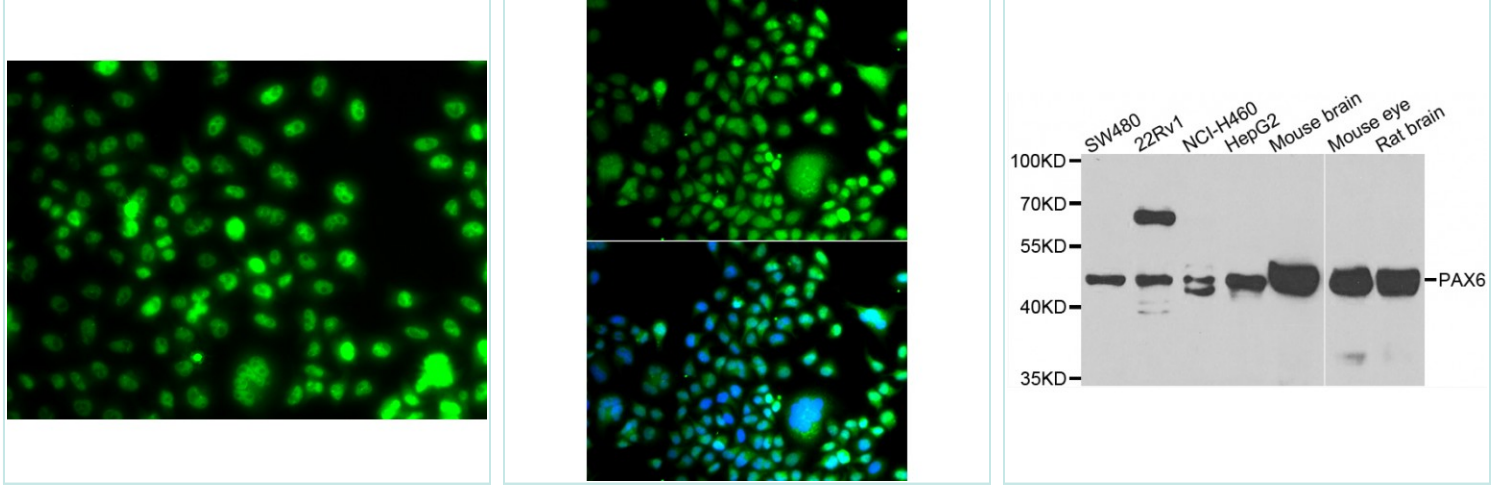


PAX6 antibody



Product Description

This gene encodes paired box gene 6, one of many human homologs of the *Drosophila melanogaster* gene *prd*. In addition to the hallmark feature of this gene family, a conserved paired box domain, the encoded protein also contains a homeo box domain. Both domains are known to bind DNA and function as regulators of gene transcription. This gene is expressed in the developing nervous system, and in developing eyes. Mutations in this gene are known to cause ocular disorders such as aniridia and Peter's anomaly. Alternatively spliced transcript variants encoding multiple isoforms have been observed for this gene.

Product Information

Code:	NB-22-23858
Clonality	Polyclonal
Host	Rabbit
Reactivity	Human, Mouse, Rat
Applications	WB, IHC
Conjugation	Unconjugated
Gene ID	5080
Isotype	IgG
Dilution range	WB 1:500-1:2000; IHC 1:50-1:200
Swiss-Prot Key	P26367
Purification	Affinity purification
Form	PBS with 0.02% sodium azide, 50% glycerol, pH7.4
Molecular Weight	N/A
Concentration	1 mg/ml
Storage	Store at -20°C. Avoid repeated freeze/thaw cycles.
Alternative names	AN; AN2; FVH1; MGDA; WAGR; D11S812E;
Note	For research use only.