

AS028

Leader in Biomolecular Solutions for Life Science



# HRP-conjugated Goat anti-Rat IgG (H+L)

Catalog No.: AS028 **15 Publications**

## Basic Information

**Observed MW**

**Calculated MW**

**Category**

Secondary Antibody

**Applications**

WB,IHC-P

**Cross-Reactivity**

**Conjugate**

HRP

## Background

Secondary antibodies are affinity-purified antibodies which will work with target-specific primary antibody in the detection, sorting or purification of its specified target. Secondary antibodies offer increased versatility enabling users to use many detection systems (e.g. HRP, AP, fluorescence). They can also provide greater sensitivity through signal amplification as multiple secondary antibodies. Most commonly, secondary antibodies are generated by immunizing the host animal (different from host species of primary antibody) with a pooled population of normal immunoglobulins from the host species of primary antibody and can be further purified and modified (i.e. antibody fragmentation, label conjugation, etc.) to ensure well-characterized specificity to corresponding normal immunoglobulins.

## Recommended Dilutions

**WB** 1:5000 - 1:10000

**IHC-P** 1:500 - 1:2000

## Immunogen Information

**Gene ID** **Swiss Prot**

**Immunogen**

Rat IgG

**Synonyms**

## Contact

 [www.abclonal.com](http://www.abclonal.com)

## Product Information

**Source**

Goat

**Isotype**

Horseradish peroxidase  
conjugated IgG

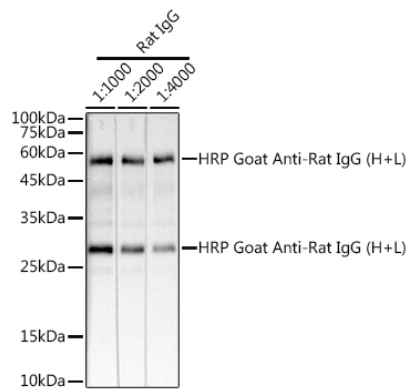
**Purification**

Affinity purification

**Storage**

Store at -20°C. Avoid freeze / thaw cycles.  
Buffer: PBS with 0.75% BSA,50% glycerol,pH7.3.

## Validation Data



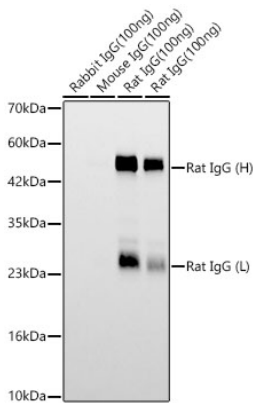
Western blot analysis of lysates from Rat IgG, using HRP Goat Anti-Rat IgG (H+L) (AS028) at 1:1000 dilution.

Lysates/proteins: 25µg per lane.

Blocking buffer: 3% nonfat dry milk in TBST.

Detection: ECL Basic Kit (RM00020).

Exposure time: 10s.



Western blot analysis of lysates from Rat IgG using HRP Goat Anti-Rat IgG (H+L) (AS028) at 1:5000 dilution.

Lysates/proteins: 50ng - 100ng per lane.

Blocking buffer: 3% nonfat dry milk in TBST.

Detection: ECL Basic Kit (RM00020).

Exposure time: 30s.