

**ATG9B Antibody**  
Catalog # ASM10524

**Specification**

---

**ATG9B Antibody - Product Information**

Application	<b>WB</b>
Primary Accession	<a href="#">Q674R7</a>
Other Accession	<a href="#">NP_001303985.1</a>
Host	<b>Rabbit</b>
Reactivity	<b>Human, Mouse</b>
Clonality	<b>Polyclonal</b>

**Description**

Rabbit Anti-Human ATG9B Polyclonal

**Target/Specificity**

Detects ~100 kDa.

**Other Names**

APG9-like 2 Antibody, APG9L2 Antibody, Nitric oxide synthase 3-overlapping antisense gene protein Antibody, Protein sONE Antibody, NOS3AS Antibody, ATG9B Antibody, Autophagy-related protein 9B Antibody,

**Immunogen**

Synthetic peptide from the N-terminal of Human ATG9B (aa. 110-121)

**Purification**

Peptide Affinity Purified

Storage **-20°C**

**Storage Buffer**

PBS, 50% glycerol, 0.09% sodium azide

Shipping Temperature **Blue Ice or 4°C**

**Certificate of Analysis**

A 1:1000 dilution of SPC-646 was sufficient for detection of ATG9B in 15 µg of Human HeLa Cell Lysates by ECL immunoblot analysis using goat anti-rabbit IgG:HRP as the secondary antibody.

**Cellular Localization**

Cytoplasmic Vesicle | Autophagosome Membrane | Multi-Pass Membrane Protein

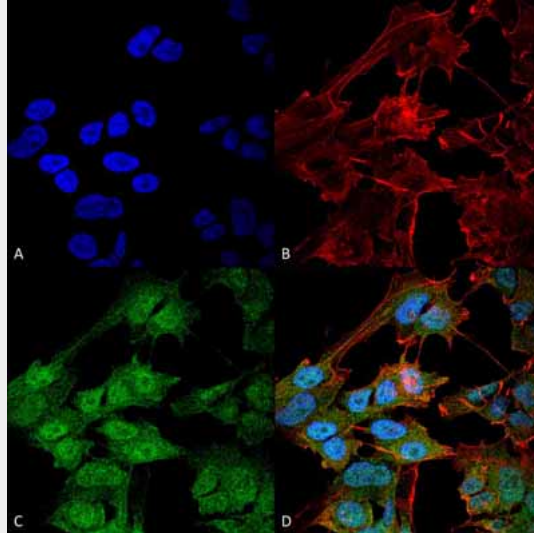
**ATG9B Antibody - Protocols**

Provided below are standard protocols that you may find useful for product applications.

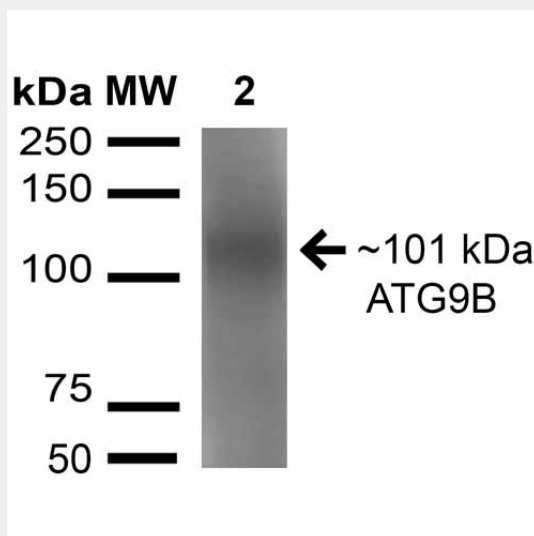
- [Western Blot](#)
- [Blocking Peptides](#)
- [Dot Blot](#)
- [Immunohistochemistry](#)
- [Immunofluorescence](#)

- [Immunoprecipitation](#)
- [Flow Cytometry](#)
- [Cell Culture](#)

**ATG9B Antibody - Images**



Immunocytochemistry/Immunofluorescence analysis using Rabbit Anti-ATG9B Polyclonal Antibody (ASM10524). Tissue: Neuroblastoma cell line (SK-N-BE). Species: Human. Fixation: 4% Formaldehyde for 15 min at RT. Primary Antibody: Rabbit Anti-ATG9B Polyclonal Antibody (ASM10524) at 1:100 for 60 min at RT. Secondary Antibody: Goat Anti-Mouse ATTO 488 at 1:200 for 60 min at RT. Counterstain: Phalloidin Texas Red F-Actin stain; DAPI (blue) nuclear stain at 1:1000, 1:5000 for 60 min at RT, 5 min at RT. Localization: Cytoplasmic Vesicle, Autophagosome Membrane, Multi-Pass Membrane Protein. Magnification: 60X. (A) DAPI (blue) nuclear stain (B) Phalloidin Texas Red F-Actin stain (C) ATG9B Antibody (D) Composite.



Western blot analysis of Rat Brain cell lysates showing detection of 101 kDa ATG9B protein using Rabbit Anti-ATG9B Polyclonal Antibody (ASM10524). Lane 1: Molecular Weight Ladder (MW). Lane 2: Rat Brain cell lysates. Load: 15 µg . Primary Antibody: Rabbit Anti-ATG9B Polyclonal Antibody (ASM10524) at 1:1000 for 16 hours at 4°C. Secondary Antibody: Goat Anti-Rabbit IgG: HRP at 1:2000 for 60 min at RT. Color Development: ECL solution for 6 min in RT. Predicted/Observed Size: 101 kDa.

**ATG9B Antibody - Background**

ATG9B is involved in autophagy and cytoplasm to vacuole transport (Cvt) vesicle formation. Plays a key role in the organization of the preautophagosomal structure/phagophore assembly site (PAS), the nucleating site for formation of the sequestering vesicle. Highly expressed in the placenta and the pituitary gland.

**ATG9B Antibody - References**

1. <http://www.uniprot.org/uniprot/Q674R7>