

**HSP110 Antibody**  
Catalog # ASM10456

**Specification**

---

**HSP110 Antibody - Product Information**

Application	<b>IHC, WB</b>
Primary Accession	<a href="#">O92599</a>
Other Accession	<a href="#">NP_006635.3</a>
Host	<b>Rabbit</b>
Reactivity	<b>Human, Mouse, Rat, Hamster, Monkey, Bovine, Yeast, Sheep</b>
Clonality	<b>Polyclonal</b>
Format	<b>FITC</b>

**Description**

Rabbit Anti-Hamster HSP110 Polyclonal

**Target/Specificity**

Detects ~110kDa.

**Other Names**

Heat shock 105kDa alpha Antibody, heat shock 105kDa beta Antibody, HSP105 Antibody, HSP105A Antibody, HSP105B Antibody, HSP110 Antibody, HSPH1 Antibody, NY CO 25 Antibody

**Immunogen**

Synthetic peptide derived from the sequence of hamster HSP110; sequence identical to human and mouse

**Purification**

Protein A Purified

Storage **-20°C**

**Storage Buffer**

PBS pH7.2, 50% glycerol, 0.09% sodium azide

Shipping Temperature

**Blue Ice or 4°C**

**Certificate of Analysis**

1 µg/ml of SPC-195 was sufficient for detection of HSP110 in 10 µg of human cell line mixed lysate by colorimetric immunoblot analysis using Goat anti-rabbit IgG:HRP as the secondary antibody.

**Cellular Localization**

Cytoplasm

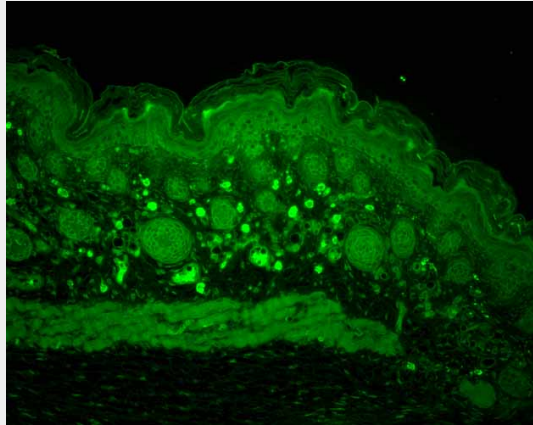
**HSP110 Antibody - Protocols**

Provided below are standard protocols that you may find useful for product applications.

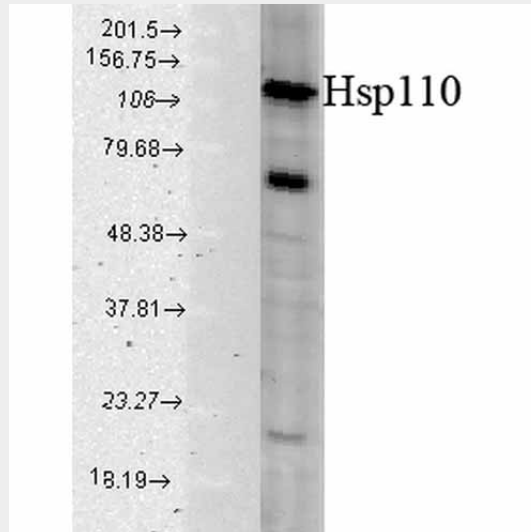
- [Western Blot](#)
- [Blocking Peptides](#)
- [Dot Blot](#)

- [Immunohistochemistry](#)
- [Immunofluorescence](#)
- [Immunoprecipitation](#)
- [Flow Cytometry](#)
- [Cell Culture](#)

### HSP110 Antibody - Images



Immunohistochemistry analysis using Rabbit Anti-HSP110 Polyclonal Antibody (ASM10456). Tissue: backskin. Species: Mouse. Fixation: Bouin's Fixative Solution. Primary Antibody: Rabbit Anti-HSP110 Polyclonal Antibody (ASM10456) at 1:100 for 1 hour at RT. Secondary Antibody: FITC Goat Anti-Rabbit (green) at 1:50 for 1 hour at RT. Localization: Positive epidermal, dermal and muscle staining.



Western blot analysis of Human Cell line lysates showing detection of HSP110 protein using Rabbit Anti-HSP110 Polyclonal Antibody (ASM10456). Load: 15 µg protein. Block: 1.5% BSA for 30 minutes at RT. Primary Antibody: Rabbit Anti-HSP110 Polyclonal Antibody (ASM10456) at 1:1000 for 2 hours at RT. Secondary Antibody: Donkey Anti-Rabbit IgG: HRP for 1 hour at RT.

### HSP110 Antibody - Background

HSP110 belongs to a family of large stress proteins known as the HSP110/SSE Family. The proteins in this family are the most distantly known relatives of the well studied HSP70 family. They share 30-33% amino acid identity, mostly in the conserved ATP-binding domain (1). HSP110 cooperates with HSP70 in protein folding in the eukaryotic cytosol (2). In mammals, HSP110 is constitutively

expressed, but exhibits particularly high levels in the brain. Both HSP70 and HSP110 are elevated after cerebral ischemia. Recent studies demonstrate that the protective effects of HSP110 deficiency in cerebral ischemia may partly be mediated by an increase in the chaperone activity of HSP70 (3). Studies also suggest that HSP110 can be used in heat shock protein-based cancer immunotherapy (4).

#### **HSP110 Antibody - References**

1. Lee-Yoon D., et al. (1995) J Biol Chem. 270: 15725-15733.
2. Dragovic Z., et al. (2006) EMBO J. 25: 2519-2528.
3. Nakamura J., et al. (2008) Stroke. 39(10): 2853-2859.
4. Subject D.R. (2001) Health Research Inc. Report number AS90893: 1-84.