

AC028

Leader in Biomolecular Solutions for Life Science



# HRP-conjugated $\beta$ -Actin Rabbit mAb

Catalog No.: AC028

Recombinant

53 Publications

## Basic Information

### Observed MW

42kDa

### Calculated MW

42kDa

### Category

SMab Recombinant Monoclonal  
Antibody

### Applications

WB,ELISA

### Cross-Reactivity

Human,Mouse,Rat,Chicken,Zebrafish,Pig

### CloneNo number

ARC5115-01

### Conjugate

HRP

## Recommended Dilutions

**WB** 1:2000 - 1:50000

**ELISA** Recommended starting concentration is 1  $\mu$ g/mL. Please optimize the concentration based on your specific assay requirements.

## Contact

 [www.abclonal.com](http://www.abclonal.com)

## Background

This gene encodes one of six different actin proteins. Actins are highly conserved proteins that are involved in cell motility, structure, integrity, and intercellular signaling. The encoded protein is a major constituent of the contractile apparatus and one of the two nonmuscle cytoskeletal actins that are ubiquitously expressed. Mutations in this gene cause Baraitser-Winter syndrome 1, which is characterized by intellectual disability with a distinctive facial appearance in human patients. Numerous pseudogenes of this gene have been identified throughout the human genome.

## Immunogen Information

### Gene ID

60

### Swiss Prot

P60709

### Immunogen

Recombinant protein of human HRP-conjugated  $\beta$ -Actin

### Synonyms

BRWS1; PS1TP5BP1; HRP-conjugated  $\beta$ -Actin

## Product Information

### Source

Rabbit

### Isotype

IgG

### Purification

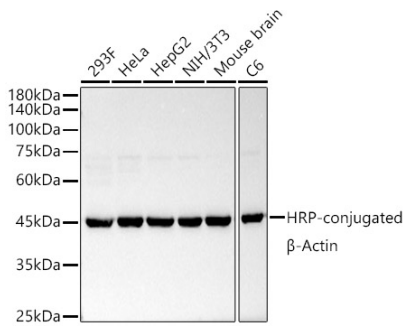
Affinity purification

### Storage

Store at  $-20^{\circ}\text{C}$ . Avoid freeze / thaw cycles.

Buffer: PBS with 0.05% proclin300,0.05% BSA,50% glycerol,pH7.3.

## Validation Data



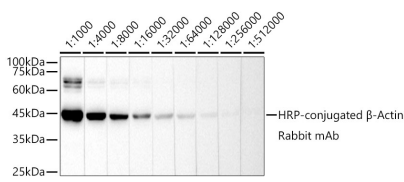
Western blot analysis of various lysates using HRP-conjugated  $\beta$ -Actin Rabbit mAb (AC028) at 1:50000 dilution.

Lysates/proteins: 25 $\mu$ g per lane.

Blocking buffer: 3% nonfat dry milk in TBST.

Detection: ECL Basic Kit (RM00020).

Exposure time: 3s.



Western blot analysis of lysates from HeLa, using HRP-conjugated  $\beta$ -Actin Rabbit mAb (AC028) at 1:1000- 1:512000 dilution.

Lysates/proteins: 25 $\mu$ g per lane.

Blocking buffer: 3% nonfat dry milk in TBST.

Detection: ECL Basic Kit (RM00020).

Exposure time: 1s.