

Ubiquitin Antibody
Ubiquitin Antibody, Clone 6C11-B3
Catalog # ASM10105**Specification**

Ubiquitin Antibody - Product Information

Application	WB
Primary Accession	POCG53
Other Accession	NP_776558.1
Host	Mouse
Isotype	IgG2a Kappa
Reactivity	Human, Mouse, Rat, Bovine
Clonality	Monoclonal
Format	HRP

Description

Mouse Anti-Bovine Ubiquitin Monoclonal IgG2a Kappa

Target/Specificity

Detects ~10kDa.

Other Names

Polyubiquitin B Antibody, RPS27A Antibody, UBA52 Antibody, UBB Antibody, UBC Antibody, ubiquitin B Antibody

Immunogen

Native bovine ubiquitin, conjugated to KLH

Purification

Protein G Purified

Storage **-20°C****Storage Buffer**

PBS pH7.4, 50% glycerol, 0.09% sodium azide

Shipping Temperature **Blue Ice or 4°C****Certificate of Analysis**

1 µg/ml of SMC-171 was sufficient for detection of ubiquitin in 10 µg of HeLa Lysate by colorimetric immunoblot analysis using Goat anti-mouse IgG:HRP as the secondary antibody.

Cellular Localization

Cytoplasm | Nucleus

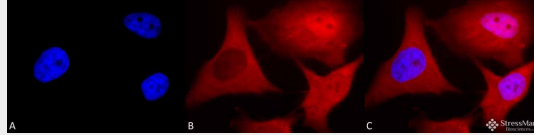
Ubiquitin Antibody - Protocols

Provided below are standard protocols that you may find useful for product applications.

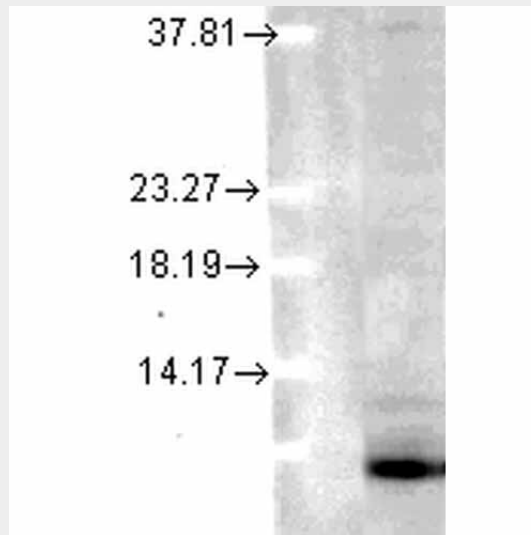
- [Western Blot](#)
- [Blocking Peptides](#)
- [Dot Blot](#)

- [Immunohistochemistry](#)
- [Immunofluorescence](#)
- [Immunoprecipitation](#)
- [Flow Cytometry](#)
- [Cell Culture](#)

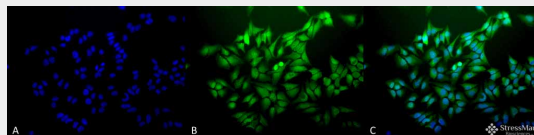
Ubiquitin Antibody - Images



Immunocytochemistry/Immunofluorescence analysis using Mouse Anti-Ubiquitin Monoclonal Antibody, Clone 6C11-B3 (ASM10105). Tissue: HeLa Cells. Species: Human. Fixation: 2% Formaldehyde for 20 min at RT. Primary Antibody: Mouse Anti-Ubiquitin Monoclonal Antibody (ASM10105) at 1:100 for 12 hours at 4°C. Secondary Antibody: APC Goat Anti-Mouse (red) at 1:200 for 2 hours at RT. Counterstain: DAPI (blue) nuclear stain at 1:40000 for 2 hours at RT. Localization: Diffuse nuclear and cytoplasmic staining. Magnification: 100x. (A) DAPI (blue) nuclear stain. (B) Anti-Ubiquitin Antibody. (C) Composite.



Western Blot analysis of Human Cell lysates showing detection of Ubiquitin protein using Mouse Anti-Ubiquitin Monoclonal Antibody, Clone 6C11-B3 (ASM10105). Load: 15 µg. Block: 1.5% BSA for 30 minutes at RT. Primary Antibody: Mouse Anti-Ubiquitin Monoclonal Antibody (ASM10105) at 1:1000 for 2 hours at RT. Secondary Antibody: Sheep Anti-Mouse IgG: HRP for 1 hour at RT.



Immunocytochemistry/Immunofluorescence analysis using Mouse Anti-Ubiquitin Monoclonal Antibody, Clone 6C11-B3 (ASM10105). Tissue: HeLa Cells. Species: Human. Fixation: 2% Formaldehyde for 20 min at RT. Primary Antibody: Mouse Anti-Ubiquitin Monoclonal Antibody (ASM10105) at 1:100 for 12 hours at 4°C. Secondary Antibody: FITC Goat Anti-Mouse (green) at 1:200 for 2 hours at RT. Counterstain: DAPI (blue) nuclear stain at 1:40000 for 2 hours at RT. Localization: Diffuse nuclear and cytoplasmic staining. Magnification: 20x. (A) DAPI (blue) nuclear stain. (B) Anti-Ubiquitin Antibody. (C) Composite.

Ubiquitin Antibody - Background

Ubiquitin is a small protein that occurs in all eukaryotic cells. The ubiquitin protein itself consists of 76 amino acids and has a molecular mass of about 8.5kDa. Key features include its C-terminal tail and the 7 Lys residues. It is highly conserved among eukaryotic species: Human and yeast ubiquitin share 96% sequence identity (1). The main function of Ubiquitin is to clear abnormal, foreign and improperly folded proteins by targeting them for degradation by the 26S proteasome (2). Ubiquitination represents an essential cellular process affected by a multi-enzyme cascade involving classes of enzymes known as ubiquitin-activating enzymes (E1s), ubiquitin-conjugating enzymes (E2s or Ubc's) and ubiquitin-protein ligases (E3s). Ubiquitin is activated in a two-step reaction by an E1 ubiquitin-activating enzyme in a process requiring ATP as an energy source. The initial step involves production of an ubiquitin-adenylate intermediate. The second step transfers ubiquitin to the E1 active site cysteine residue, with release of AMP. This step results in a thioester linkage between the C-terminal carboxyl group of ubiquitin and the E1 cysteine sulfhydryl group. The third step is a transfer of ubiquitin from E1 to the active site cysteine of a ubiquitin-conjugating enzyme E2 via a trans(thio)esterification reaction. And the final step of the ubiquitylation cascade creates an isopeptide bond between a lysine of the target protein and the C-terminal glycine of ubiquitin. In general, this step requires the activity of one of the hundreds of E3 ubiquitin-protein ligases (often termed simply ubiquitin ligase). E3 enzymes function as the substrate recognition modules of the system and are capable of interaction with both E2 and substrate(2, 3). Ubiquitination also participates in the internalization and degradation of plasma membrane proteins such as some of the TCR subunits while still ER-membrane associated (4). Ubiquitin also plays a role in regulating signal transduction cascades through the elimination inhibitory proteins, such as I κ B α and p27 (5).

Ubiquitin Antibody - References

1. Wilkinson K.D. (1995) *Annu. Rev. Nutr.* 15:161-189.
2. Bonifacino J.S., et al. (1998) *Annu Rev Cell Dev Biol.* 14: 19-57.
3. Boston Biochem: "Ubiquitin Proteasome Pathway Overview"
<http://www.bostonbiochem.com/upp.php>
4. Yang M., et al. (1998) *J Exp Med.* 187: 1835-1846.
5. Chen Z.J., et al. (1996) *Cell* 84: 853-862.