

**ATG7 Antibody**  
Catalog # ASM10498

**Specification**

---

**ATG7 Antibody - Product Information**

Application	<b>WB</b>
Primary Accession	<a href="#">O95352</a>
Other Accession	<a href="#">NP_001129503.2</a>
Host	<b>Rabbit</b>
Reactivity	<b>Human, Mouse, Rat</b>
Clonality	<b>Polyclonal</b>

**Description**

Rabbit Anti-Human ATG7 Polyclonal

**Target/Specificity**

Detects 77.9 kDa.

**Other Names**

Autophagy 7S. cerevisiae, homolog of Antibody, APG7 like Antibody, ATG7\_HUMAN Antibody, hAGP7 Antibody, Ubiquitin-like modifier-activating enzyme ATG7 Antibody, Autophagy related protein 7 Antibody, Autophagy-related protein 7 Antibody, GSA 7 Antibody, APG7, S. cerevisiae, homolog of Antibody, Ubiquitin-activating enzyme E1-like protein Antibody, Autophagy-related 7 (yeast) Antibody, APG7 autophagy 7 like Antibody, 1810013K23Rik Antibody, APG7 autophagy 7-like (S. cerevisiae) Antibody, ATG12-activating enzyme E1 ATG7 Antibody, ATG7 autophagy related 7 homolog Antibody, Atg7l Antibody, Ubiquitin activating enzyme E1 like protein Antibody, Apg 7 Antibody, APG7L Antibody, DKFZp434N0735 Antibody, ATG 7 Antibody, APG7-like Antibody, GSA7 Antibody, ATG7 autophagy related 7 homolog (S. cerevisiae) Antibody, ATG7 Antibody

**Immunogen**

Synthetic peptide from the C-terminal of Human ATG7

**Purification**

Peptide Affinity Purified

Storage **-20°C**

**Storage Buffer**

PBS, 50% glycerol, 0.09% sodium azide

Shipping Temperature

**Blue Ice or 4°C**

**Certificate of Analysis**

A 1:1000 dilution of SPC-609 was sufficient for detection of ATG7 in 15 µg of human HeLa cell lysates by ECL immunoblot analysis using goat anti-rabbit IgG:HRP as the secondary antibody.

**Cellular Localization**

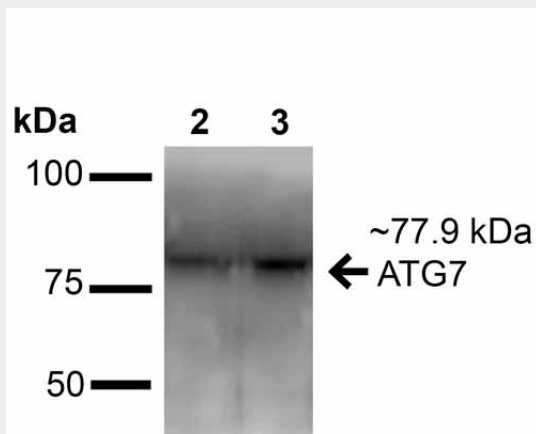
Cytoplasm | Preautophagosomal Structure

**ATG7 Antibody - Protocols**

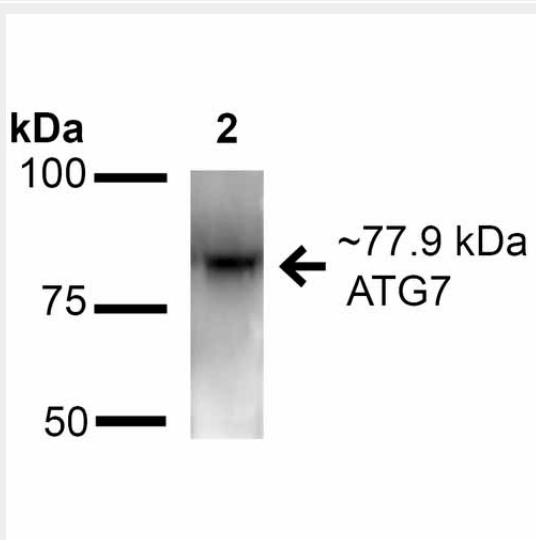
Provided below are standard protocols that you may find useful for product applications.

- [Western Blot](#)
- [Blocking Peptides](#)
- [Dot Blot](#)
- [Immunohistochemistry](#)
- [Immunofluorescence](#)
- [Immunoprecipitation](#)
- [Flow Cytometry](#)
- [Cell Culture](#)

### ATG7 Antibody - Images



Western blot analysis of Human 293Trap cell lysates showing detection of ~77.9 kDa ATG7 protein using Rabbit Anti-ATG7 Polyclonal Antibody (ASM10498). Lane 1: Molecular Weight Ladder (MW). Lane 2: Human 293Trap cell lysates. Load: 20  $\mu$ g. Block: 2% BSA and 2% Skim Milk in 1X TBST. Primary Antibody: Rabbit Anti-ATG7 Polyclonal Antibody (ASM10498) at 1:1000 for 16 hours at 4°C. Secondary Antibody: Goat Anti-Rabbit IgG: HRP at 1:2000 for 60 min at RT. Color Development: ECL solution for 6 min at RT. Predicted/Observed Size: ~77.9 kDa.



Western blot analysis of Mouse and rat brain cell lysates showing detection of ~77.9 kDa ATG7 protein using Rabbit Anti-ATG7 Polyclonal Antibody (ASM10498). Lane 1: Molecular Weight Ladder. Lane 2: Mouse brain cell lysates. Lane 3: Rat brain cell lysates. Load: 20  $\mu$ g. Block: 2% BSA and

2% Skim Milk in 1X TBST. Primary Antibody: Rabbit Anti-ATG7 Polyclonal Antibody (ASM10498) at 1:1000 for 16 hours at 4°C. Secondary Antibody: Goat Anti-Rabbit IgG: HRP at 1:2000 for 60 min at RT. Color Development: ECL solution for 6 min at RT. Predicted/Observed Size: ~77.9 kDa.

### **ATG7 Antibody - Background**

ATG7 in conjunction with ATG10, mediates the formation of the autophagosome when ATG12 is covalently bound to ATG5 and targets to autophagosome vesicles. It also activates ATG8, and is crucial for amino acid supply in neonates.

### **ATG7 Antibody - References**

1. Mizushima N., et al. (1998) J Biol Chem. 273: 33889-92.
2. Mizushima N., et al. (1998) Nature. 395: 395-8.
3. Suzuki K., et al. (2001) EMBO J. 20: 5971-81.
4. Tanida I., et al. (1999) Mol Biol Cell. 10: 1367-79.
5. Shintani T., et al. (1999) EMBO J. 18: 5234-41.