

**LRRK2/Dardarin Antibody**  
**LRRK2/Dardarin Antibody, Clone S231B-34**  
**Catalog # ASM10279**

**Specification**

---

**LRRK2/Dardarin Antibody - Product Information**

Application	<b>WB</b>
Primary Accession	<a href="#">Q5S007</a>
Other Accession	<a href="#">NP_940980</a>
Host	<b>Mouse</b>
Isotype	<b>IgG2a</b>
Reactivity	<b>Human, Rat</b>
Clonality	<b>Monoclonal</b>

**Description**

Mouse Anti-Human LRRK2/Dardarin Monoclonal IgG2a

**Target/Specificity**

Detects >200kDa.

**Other Names**

Leucine-rich repeat kinase 2 Antibody, RIP7 Antibody, PARK8 Antibody, Dardarin Antibody, ROCO 2 Antibody, RIPK7 Antibody, Leucine-rich repeat serine/threonine-protein kinase 2 Antibody, augmented in rheumatoid arthritis 17 Antibody

**Immunogen**

Fusion protein amino acids 841-960 of human LRRK2. 81% identical in mouse, 80% identical in rat. <30% identity with LRRK1.

**Purification**

Protein G Purified

Storage **-20°C**

**Storage Buffer**

PBS pH 7.4, 50% glycerol, 0.1% sodium azide

Shipping Temperature **Blue Ice or 4°C**

**Certificate of Analysis**

10 µg/ml of SMC-445 was sufficient for detection of LRRK2/Dardarin in 20 µg of rat brain lysate by colorimetric immunoblot analysis using Goat anti-mouse IgG:HRP as the secondary antibody.

**Cellular Localization**

Cytoplasm | Membrane | Mitochondrion | Golgi Apparatus | Cell Projection | Axon | Dendrite | Endoplasmic Reticulum | Cytoplasmic Vesicle | Endosome | Lysosome

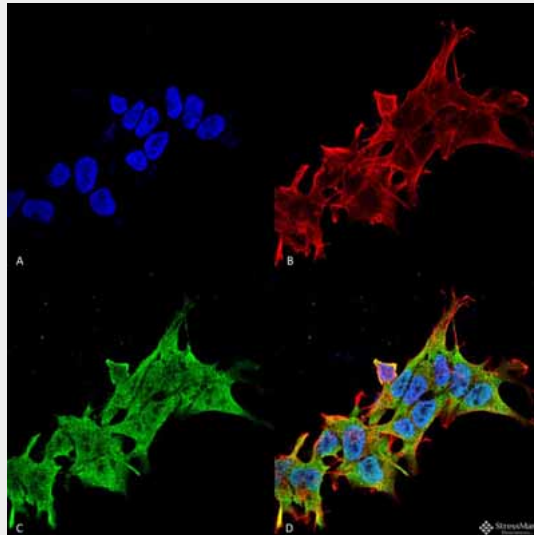
**LRRK2/Dardarin Antibody - Protocols**

Provided below are standard protocols that you may find useful for product applications.

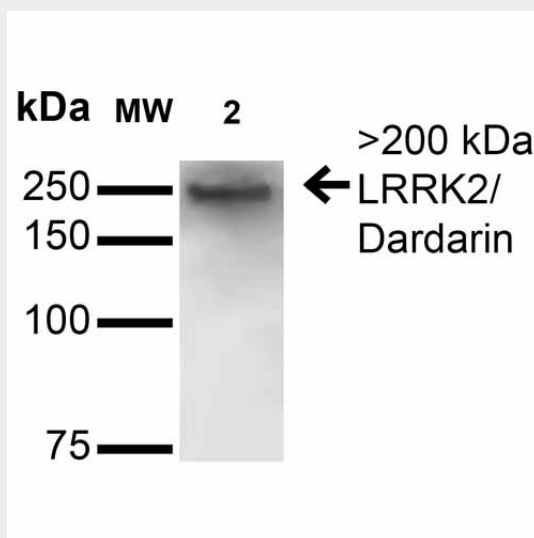
- [Western Blot](#)

- [Blocking Peptides](#)
- [Dot Blot](#)
- [Immunohistochemistry](#)
- [Immunofluorescence](#)
- [Immunoprecipitation](#)
- [Flow Cytometry](#)
- [Cell Culture](#)

### LRRK2/Dardarin Antibody - Images



Immunocytochemistry/Immunofluorescence analysis using Mouse Anti-LRRK2/Dardarin Monoclonal Antibody, Clone S231B-34 (ASM10279). Tissue: Neuroblastoma cell line (SK-N-BE). Species: Human. Fixation: 4% Formaldehyde for 15 min at RT. Primary Antibody: Mouse Anti-LRRK2/Dardarin Monoclonal Antibody (ASM10279) at 1:100 for 60 min at RT. Secondary Antibody: Goat Anti-Mouse ATTO 488 at 1:100 for 60 min at RT. Counterstain: Phalloidin Texas Red F-Actin stain; DAPI (blue) nuclear stain at 1:1000, 1:5000 for 60min RT, 5min RT. Localization: Cytoplasm . Magnification: 60X. (A) DAPI (blue) nuclear stain (B) Phalloidin Texas Red F-Actin stain (C) LRRK2/Dardarin Antibody (D) Composite.



Western Blot analysis of Rat Brain Membrane showing detection of >200 kDa LRRK2/Dardarin protein using Mouse Anti-LRRK2/Dardarin Monoclonal Antibody, Clone S231B-34 (ASM10279).

Lane 1: Molecular Weight Ladder. Lane 2: Rat Brain Membrane. Load: 15 µg. Block: 2% BSA and 2% Skim Milk in 1X TBST. Primary Antibody: Mouse Anti-LRRK2/Dardarin Monoclonal Antibody (ASM10279) at 1:200 for 16 hours at 4°C. Secondary Antibody: Goat Anti-Mouse IgG: HRP at 1:1000 for 1 hour RT. Color Development: ECL solution for 6 min in RT. Predicted/Observed Size: >200 kDa.

### **LRRK2/Dardarin Antibody - Background**

LRRK2 is a large protein with multiple domains including several ankyrin, leucine-rich, and WD40 repeats, a Ras-like small GTPase family domain named Roc, and a kinase domain that is closely related to the RIP kinase domain. LRRK2 gene is expressed in brain as well as in other tissues such as lung, liver and heart. LRRK2 might be central to the pathogenesis of several major neurodegenerative diseases associated with parkinsonism. Several dominantly inherited missense mutations in the gene encoding LRRK2 have been identified in several families that exhibit a broad spectrum of neuropathological features.