

A20453

Leader in Biomolecular Solutions for Life Science



# Proteinase K Rabbit pAb

Catalog No.: A20453

## Basic Information

---

### Observed MW

60kDa

### Calculated MW

### Category

Polyclonal Antibody

### Applications

WB,ELISA

### Cross-Reactivity

## Background

---

Proteinase K is an endopeptidase belonging to the subtilisin group of serine proteases. Proteinase K was isolated from the mold (*Paratyphlocyba album* or previously known as *Tritirachium album*). Proteinase K has five cysteines. Four of the cysteine residues form two disulfide bonds (34-124 and 179-248, respectively) and one lies below one of the catalytic triads. Proteinase K often binds two calcium ions required for full enzymatic activity. In molecular biology laboratories, proteinase K is useful during preparation of DNA or RNA samples by degrading and inactivating proteins.

## Recommended Dilutions

---

**WB** 1:500 - 1:1000

**ELISA** Recommended starting concentration is 1 µg/mL. Please optimize the concentration based on your specific assay requirements.

## Immunogen Information

---

**Gene ID** **Swiss Prot**

### Immunogen

Recombinant protein of Proteinase K.

### Synonyms

## Contact

---

 [www.abclonal.com](http://www.abclonal.com)

## Product Information

---

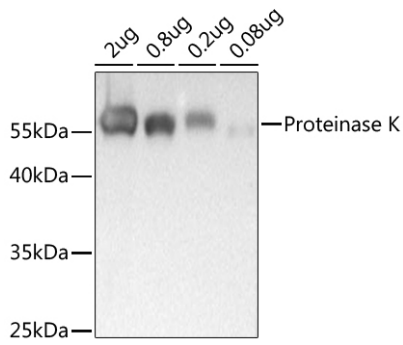
<b>Source</b> Rabbit	<b>Isotype</b> IgG	<b>Purification</b> Affinity purification
-------------------------	-----------------------	--

### Storage

Store at -20°C. Avoid freeze / thaw cycles.  
Buffer: PBS with 0.01% thimerosal, 50% glycerol, pH7.3.

## Validation Data

---



Western blot analysis of recombinant Proteinase K Protein using Proteinase K Rabbit pAb (A20453) at 1:1000 dilution incubated overnight at 4°C.

Secondary antibody: HRP-conjugated Goat anti-Rabbit IgG (H+L) (AS014) at 1:10000 dilution.

Lysates/proteins: 25µg per lane.

Blocking buffer: 3% nonfat dry milk in TBST.

Detection: ECL Basic Kit (RM00020).

Exposure time: .